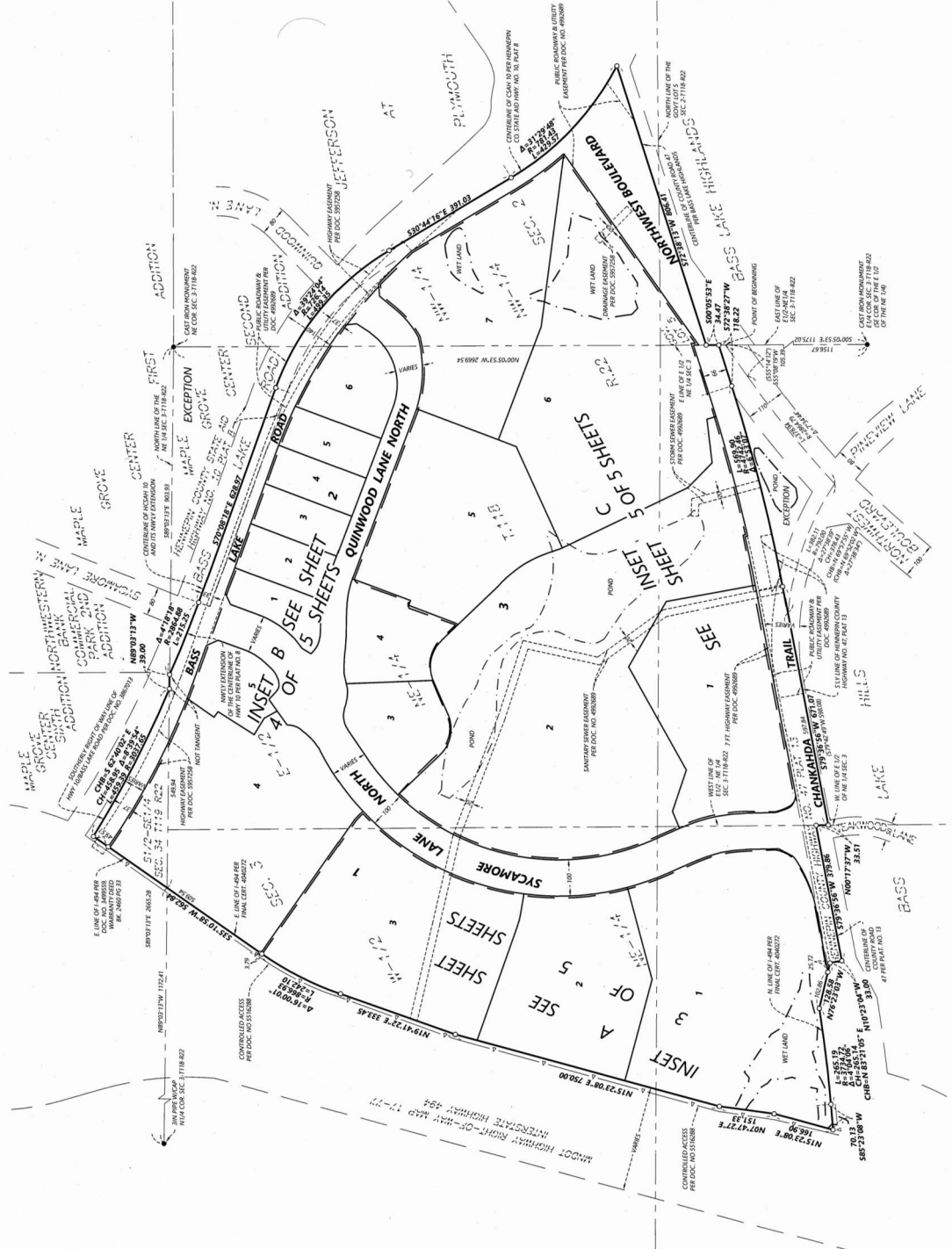


OFFICIAL PLAN

THE BOULEVARD



The North line of the NE 1/4 of Section 3 Township 18N Range 23W is assumed to bear S89°03'13"E

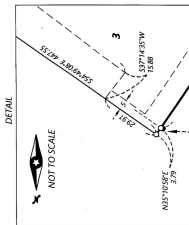
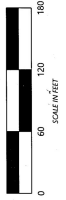
- SET 1/2" REBAR WITH CAP #2255
- FOUND MONUMENT AS NOTED ON SURVEY
- DOWNSIDE CONTROLLED ACCESS PER DOC. NO. 5316288
- - - DRAINAGE AND UTILITY EASEMENT
- - - EXISTING EASEMENTS
- - - INSET BORDER
- DIMENSION OF RECORD
- 000000

OFFICIAL PLAN

THE BOULEVARD

The North line of the NE 1/4 of Section 3 Township 18N Range 25W is assumed to bear S89°57'13"E (true) and to be 2.70000 feet long.

- SET 12" BEAM WITH CAP MARKS
- FOUND MONUMENT AS NOTED ON SURVEY
- FOUND CAST IRON MONUMENT
- DRIVE CONTROL ACCESS PERIOD. NO. 33180B
- DRIVE CONTROL ACCESS PERIOD. NO. 33180B
- DRAINAGE AND UTILITY EASEMENT
- EXISTING EASEMENTS

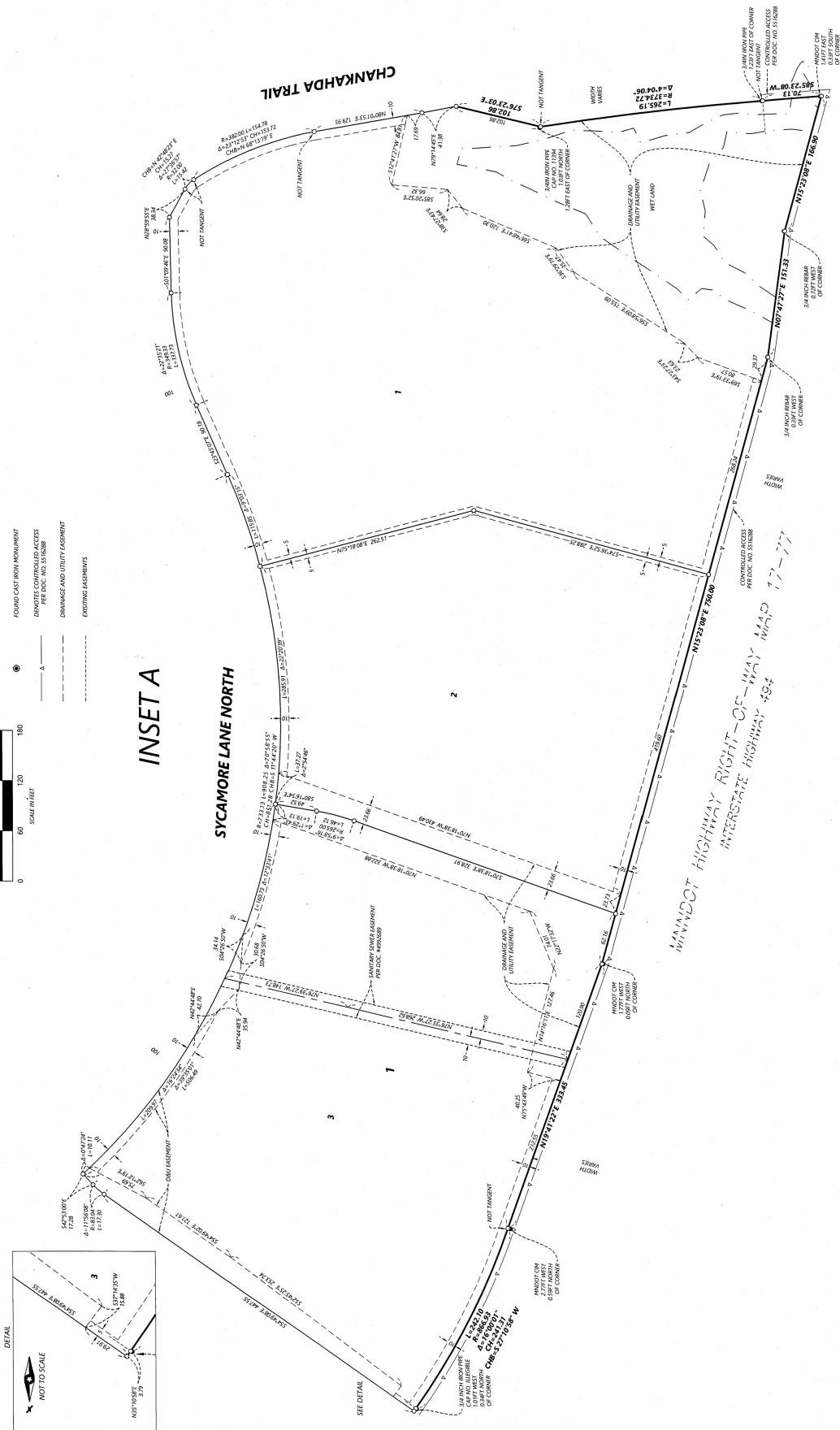


INSET A

SYCAMORE LANE NORTH

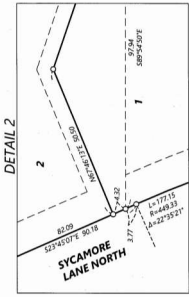
CHANKAKHDA TRAIL

MINNODOT HIGHWAY RIGHT-OF-WAY MAP INTERSTATE HIGHWAY 494

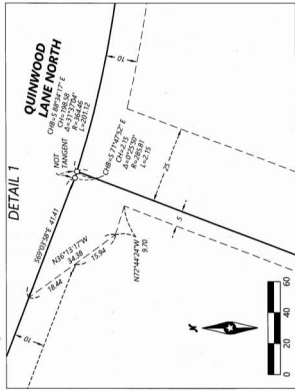
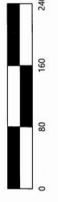
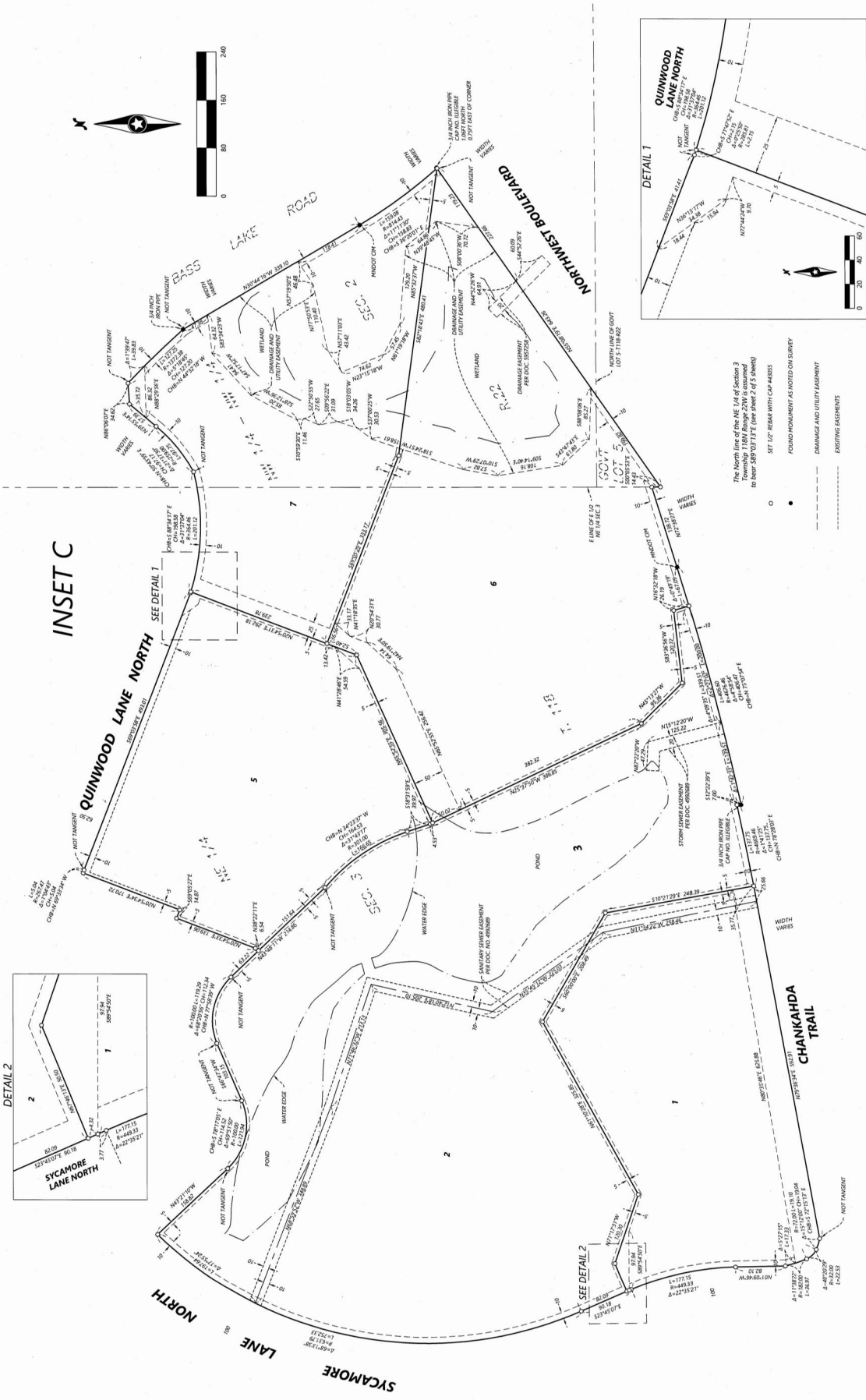


OFFICIAL PLAN

THE BOULEVARD



INSET C



- The North line of the NE 1/4 of Section 3 to show SECTION 3 (see sheet 2 of 5 sheets)
- SET 1/2" REBAR WITH CAP AGES
 - FOUND MONUMENT AS NOTED ON SURVEY
 - DRAINAGE AND UTILITY EASEMENT
 - EXISTING EASEMENTS