

# Hennepin County Household Hazardous Waste



What's it all about?



# Household Hazardous Waste (HHW)

## What is it?

Generated from household activity that exhibits characteristics of hazardous waste or that is listed as hazardous waste under agency rules but does not include waste from commercial activities that is generated, stored, or present in a household.

**Minnesota Statute 115A.96**

# Pesticides/Poisons

- Some banned or restricted due to long lasting hazardous effects
- Liquids, aerosols, solids, powders



Examples:

Herbicides  
Bactericides  
Insecticides  
Rodenticides  
Algaecides

# Flammables

- Considered hazardous because of flammability & may contain chlorine or other heavy metals
- Examples: Gasoline, kerosene, paint thinner, furniture polish, windshield washer fluid and nail polish remover.
- Aerosols. Liquids, solids & pastes



# Paint

## Oil Based

Considered hazardous because of

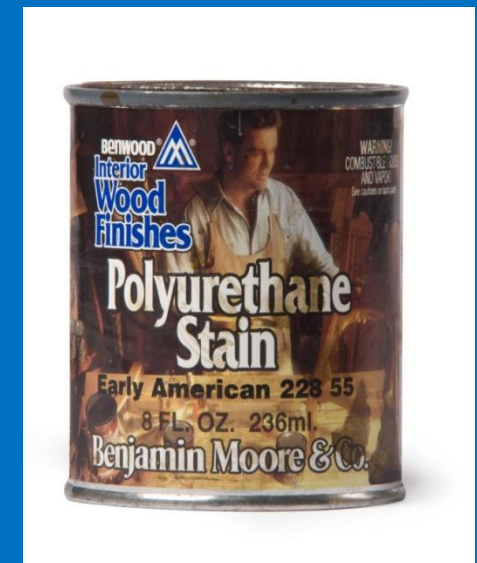
- Flammability
- May contain heavy metal constituents used for pigments & durability

## Latex/Water Based

- Non hazardous
- EPA required mercury removed in 1990

Examples:

Varnishes, shellacs, lacquers, stains, and sealers





# Corrosive products

- Acids and Bases are considered hazardous because they can burn and corrode other materials.
- Found in many household cleaners: Toilet, drain, oven & concrete cleaners, pool chemicals
- Aerosols, liquid, solid, or powder

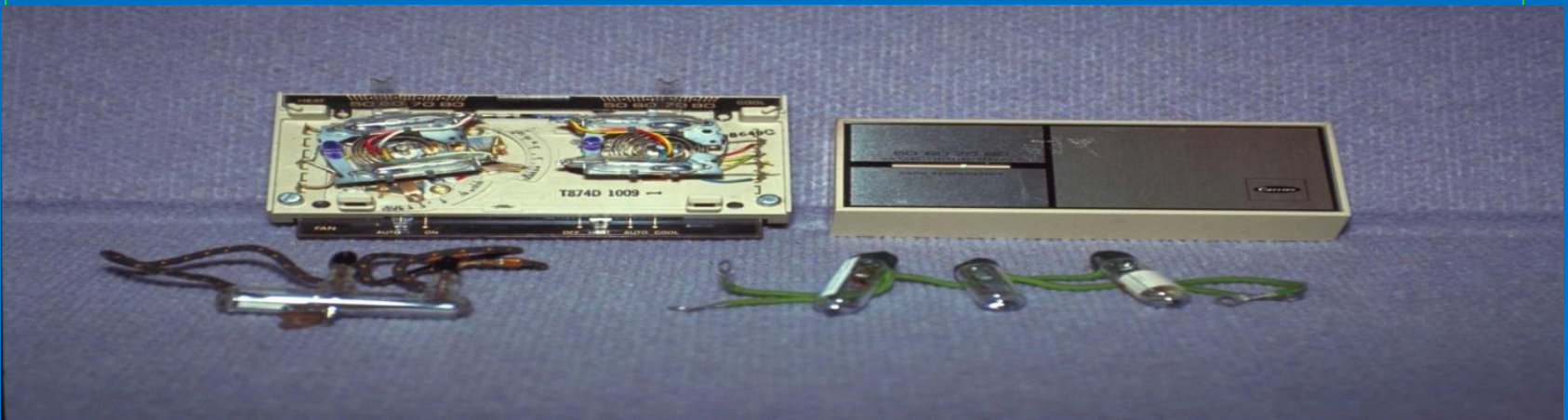


# Mercury containing items

- Mercury is a neurotoxin and bio-accumulator in the environment

## Examples:

Thermostats, thermometers, mercury switches, blood pressure cuffs, antique clocks, barometers, vintage toys & recreational items (archery bows, fishing lures, golf balls) and



# Mercury in the Community



Mercury from old grandfather clock



Jar of Mercury from 1976



Mercury switches



# Lighting

## Fluorescent Bulbs

- Lamps (all sizes & CFL's), HID, sodium halide & neon
- Banned by the MPCA from garbage disposal in 1992 (MN statute 115A.932)
- Contain a small amount mercury
- Do not tape bulbs

## LED

- Do NOT contain mercury
- May contain very small amount of arsenic, lead, iron, copper, and nickel



# Lead Acid & Household Batteries

## Automotive/Lead Acid:

- Automobile, motorcycle, boat, etc.
- Banned by the MPCA from garbage disposal in 1988
- Contain lead and acid

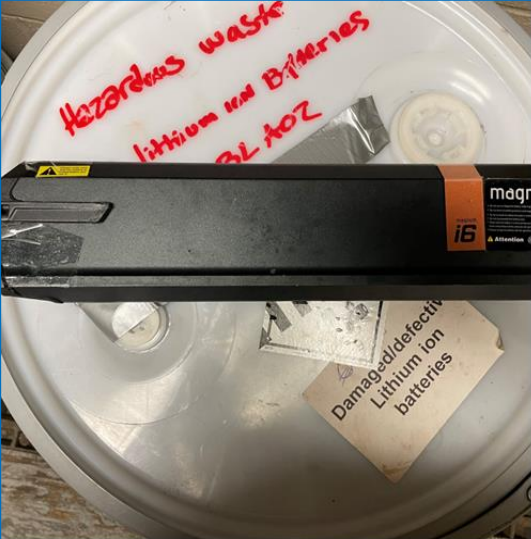


## Household:

- Single-Use, Rechargeable & button
- Rechargeable batteries & products with non-removable rechargeable batteries cannot be disposed as mixed municipal waste. (Minn. Stat. 115A.9157 subd. 2)

May contain lead, mercury, cadmium, nickel, lithium & other heavy metals

# Lithium Batteries



E-Bike Battery  
500 Wh



Battery Charger  
500 Wh



Battery Back-Up  
10,000 Wh

# Bulging Lithium Batteries



**Damaged laptop  
battery**



**Damaged cell  
phone battery**



**Damaged power  
tool battery**



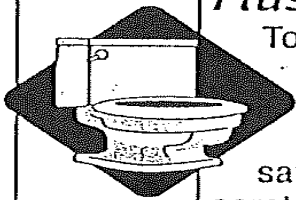
# Motor Oil, Oil Filters and Antifreeze

## Motor oil

- Oil, oil filters and oil-contaminated materials due to flammability and toxicity.
- It is illegal to put motor oil and filters in the garbage, on the land, in water, down a sewer or in a storm drain, per MN Statute 115A.916.
- Antifreeze  
Antifreeze is more toxic after it has been used



# Label reading:



## *FlushAway*

### Toilet Bowl Cleanser

Thick with Bleach and Abrasives

A powerful combination of bleach and abrasives scrubs away stains to leave your toilet bowl thoroughly clean. It's safe for colored toilets, and the mild abrasives will not scratch your bowl.

And FlushAway Toilet Bowl Cleanser has an easy-open cap and a new angle neck design to make cleaning under the rim easier.

#### DIRECTIONS FOR USE:

SHAKE WELL BEFORE USE.

1. To open, simply twist cap counter-clockwise one-quarter turn. Cap does not come off.
2. Lower bottle so nozzle is below rim. Direct product under and around rim.
3. Brush to completely cover inside of bowl, then flush. Rinse brush in fresh water after use. Repeat if necessary.

IMPORTANT - Close cap after each use to prevent product from drying out.

**CAUTION:** Eye irritant. May be irritating to skin.

**FIRST AID:** Eyes - Flush with water for 15 minutes.

**IF SWALLOWED** - Drink a glassful of water. In all cases, call a physician.

**KEEP OUT OF REACH OF CHILDREN.** Avoid contact with clothes, fabric or carpet. Do not use or mix with other household chemicals as hazardous gases may result.

**TO DISPOSE:** Pour unused product down drain and flush with water. Do not mix products when disposing.

Contains calcium carbonate, hypochlorite bleach and detergents. Contains no phosphorous. Safe for plumbing and septic systems.

MADE IN U.S.A.

Directions for use

Signal Word

First Aid

Cautionary Statement

Storage & Disposal

Ingredients

# Pesticide Labels

## Active vs “Other” or Inert Ingredients



**Acephate – Insecticide**  
**Triforine – Fungicide**  
**Fenbutatin oxide- Insecticide**  
**Other Ingredients – 92% ???**

# Label Reading & “Green” Statements

- Water based
- Biodegradable
- Non-flammable
- Natural
- No acids
- Environmentally friendly



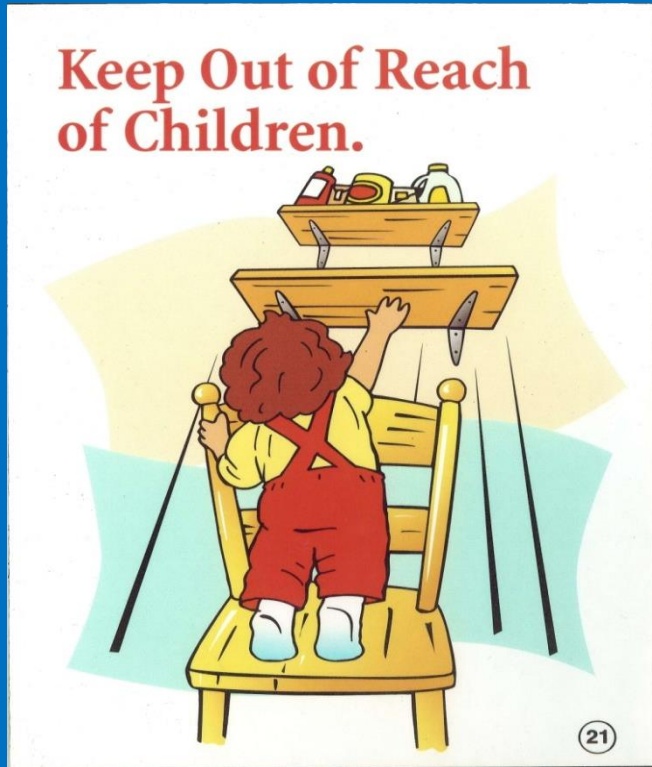


# For Your Safety: Use Products Properly



- What is the product's intended purpose?
- Do I need safety equipment?
- Should it be diluted?
- How much product do I need?
- Used in a ventilated area?
- Outside conditions – wind, rain, temperature
- Used away from heat or flame

# For Your Safety: Store it properly



- Lids are tightly sealed
- Store in a dry place, don't let it freeze
- Store away from heat
- Store away from food
- Keep out of reach of children & pets
- Store in original container

# For Your Safety: Use Products Properly



**NEVER**

**Mix different products  
together**

# Before you visit

Check whether your item is accepted at county drop-off facilities by :

- Browsing the [Green Disposal Guide](#)
- Email [environment@hennepin.us](mailto:environment@hennepin.us)
- Call 612-348-3777



# Fees

**Fees are charged for certain items at the drop-off facilities.**

- **Tires: \$3 each**
- **TVs, computer monitors and laptops: \$10 each**
- **Large appliances: \$15 each.**
- **Mattresses and box springs (accepted at Brooklyn Park facility only): \$25 each item**

# Remember to bring:

- **Proof of residency, such as a driver's license or utility bill, is required**
- **Payment: Cash, check, major credit cards, and debit cards accepted**

# Prepare you waste for transport for your safety and ours

- Lids are secure & closed
- Items are in upright position
- Place in plastic lined cardboard box
- Items are labeled



# When you get to HHW

- Follow directions given by staff on-site. South Hennepin and BPTS HHW is full service. BPTS recycling area is mostly self service
- Items should be stored in the trunk of the vehicle, bed of truck, or in a trailer
- Please secure pets
- Consider visiting on Wednesdays and Thursdays (Tuesdays and Saturdays are the busiest days)

# South Hennepin & Brooklyn Park HHW and Recycling Facilities

**South Hennepin**  
1400 West 96th Street  
Bloomington

**Brooklyn Park Transfer Station**  
8100 Jefferson Highway  
Brooklyn Park

**Hours:**  
**Tuesday - Saturday 9:00AM - 5:00PM**  
**CLOSED Sunday & Monday**





Questions ?

Louisa Tallman, CHMM  
Hennepin County Environment and Energy  
HHW Program

[louisa.tallman@hennepin.us](mailto:louisa.tallman@hennepin.us)

Brooklyn Park Transfer Station  
8100 Jefferson Highway  
Brooklyn Park, MN 55445