

EXISTING PLAN SYMBOLS

PROPERTY LINES/RIGHT-OF-WAY	
UTILITY EASEMENT	
TREE LINE	
SIGN	
DECIDUOUS TREE	
SHRUB	
CONIFEROUS TREE	

EXISTING UTILITY SYMBOLS

FIBER OPTIC LINE	
GAS LINE	
COMMUNICATION LINE	
ELECTRIC POWER LINE	
WATER MAIN	
SANITARY SEWER	
STORM SEWER	
COMMUNICATIONS PEDESTAL	
POWER POLE	
ELECTRIC BOX	
CATCH BASIN	
STORM APRON	
STORM SEWER MANHOLE	
GATE VALVE	
HYDRANT	
SANITARY SEWER MANHOLE	

19TH AVENUE AND DUNKIRK LANE POND IMPROVEMENTS

CITY OF PLYMOUTH

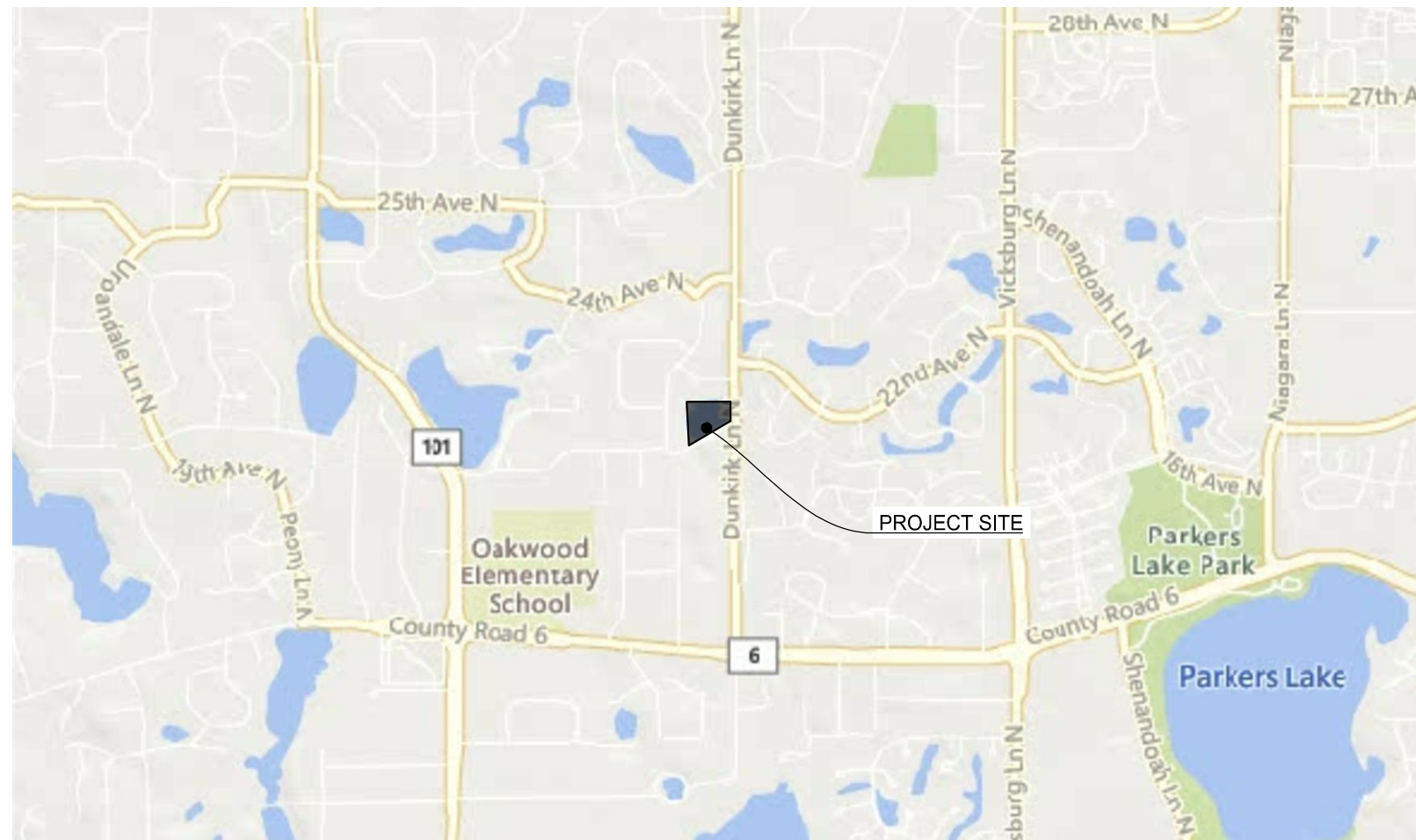
GOVERNING SPECIFICATIONS

THE 2020 EDITION OF THE MINNESOTA DEPARTMENT OF TRANSPORTATION "STANDARD SPECIFICATIONS FOR CONSTRUCTION" AND THE "SUPPLEMENTAL SPECIFICATIONS" DATED SEPTEMBER 2022 SHALL GOVERN ALONG WITH THE CITY OF PLYMOUTH ENGINEERING GUIDELINES AND STANDARD DETAIL SPECIFICATIONS DATED JAN. 2023.

ALL TRAFFIC CONTROL DEVICES SHALL CONFORM TO THE LATEST EDITION OF THE MINNESOTA MANUAL ON UNIFORM TRAFFIC CONTROL DEVICES, INCLUDING THE LATEST FIELD MANUAL FOR TEMPORARY TRAFFIC CONTROL ZONE LAYOUTS.

PLAN SET INDEX

SHEET NUMBER	SHEET TITLE
1	TITLE SHEET
2	MISCELLANEOUS DETAILS
3	MISCELLANEOUS DETAILS
4	GRADING PLAN



PROJECT LOCATION MAP



THIS PLAN SET CONTAINS 4 SHEETS

THIS PLAN SET HAS BEEN PREPARED FOR:

CITY OF PLYMOUTH
 3400 PLYMOUTH BLVD
 PLYMOUTH, MN 55447
 (763) 509-5000

ALL APPLICABLE FEDERAL, STATE, AND LOCAL LAWS AND ORDINANCES WILL BE COMPLIED WITH IN THE CONSTRUCTION OF THIS PROJECT.



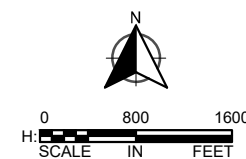
I HEREBY CERTIFY THAT THIS PLAN WAS PREPARED BY ME OR UNDER MY DIRECT SUPERVISION, AND THAT I AM A DULY LICENSED PROFESSIONAL ENGINEER UNDER THE LAWS OF THE STATE OF MINNESOTA.

Laura Rescorla

LAURA RESCORLA, P.E.

DATE: 08/30/2023

LICENSE NUMBER: 58716



PLAN REVISIONS		
DATE	SHEET NO.	APPROVED BY

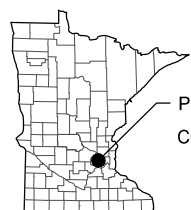
UTILITY INFORMATION

THE SUBSURFACE UTILITY INFORMATION IN THIS PLAN IS UTILITY QUALITY LEVEL D. THIS UTILITY QUALITY LEVEL WAS DETERMINED ACCORDING TO THE GUIDELINES OF CI/ASCE 38-02, ENTITLED "STANDARD GUIDELINES FOR THE COLLECTION AND DEPICTION OF EXISTING SUBSURFACE UTILITY DATA."

GOPHER ONE CALL TICKET NUMBER: 231433561

EXCAVATION NOTICE SYSTEM

A CALL TO GOPHER STATE ONE (651-454-0002) IS REQUIRED A MINIMUM OF 48 HOURS PRIOR TO PERFORMING ANY EXCAVATION.



PROJECT LOCATION
 COUNTY: HENNEPIN

SECT 29, TWP 118N, RNG 22W

K:\022133-000\Cadd\Plan\022133-000-C-TITLE-PLAN.dwg 9/11/2023 7:22:03 AM

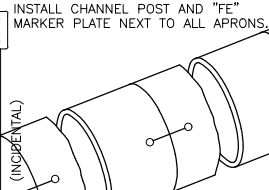
WSB PROJ. NO. 022133-000
 CITY PROJ. NO. WR190001

SHEET
 1
 OF
 4

RIP-RAP REQUIRED FOR ALL APRONS: SEE STD. PLATE ST-4

PLACE GRANITE RIP-RAP AROUND SIDES AND OVER THE TOP OF THE F.E.S.

DON'T PLACE RIP-RAP HIGHER THAN THE INVERT OF THE F.E.S.



TIE THE LAST 6 JOINTS ON INLET AND OUTLET PIPES AND BED IN GRANULAR MATERIAL.

USE 2 TIE BOLT FASTENERS PER JOINT INSTALLED AT 60 DEG FROM TOP OR BOTTOM OF PIPE.
USE 5/8" TIE FOR PIPE SIZES 12" TO 27".
USE 3/4" TIE FOR PIPE SIZES 30" TO 66".
USE 1" TIE FOR PIPE SIZES OVER 72".
NUTS AND WASHERS ARE NOT REQUIRED ON PIPE SIZE LESS THAN 24".

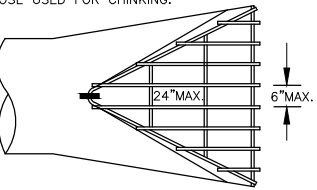
TRASH GUARDS WILL BE REQUIRED ON ALL 24" OR LARGER APRONS UNLESS APPROVED BY THE CITY ENGINEER.

SIZE OF PIPE	BARS	BOLTS	MIN. "L"
21" TO 42"	1"	3/4"	6"
48" TO 72"	1-1/4"	1"	12"

PLACE NONWOVEN GEOTEXTILE FABRIC UNDER RIP-RAP AND EXTENDING 1' UNDER FES

HAND PLACED GRANITE RIPRAP

INDIVIDUAL STONES SHALL NOT WEIGH LESS THAN 50 POUNDS EACH EXCEPT THOSE USED FOR CHINKING.



INSTALL 3 HOT DIP GALVANIZED CLIPS TO FASTEN TRASH GUARD TO F.E.S.



STANDARD DETAILS
INLET & OUTLET F.E.S. WITH TRASH GUARD
CITY OF PLYMOUTH

PUBLISHED 3-23
CITY PL. NO. ST-3
REVISED 1-17



STANDARD DETAILS
RIPRAP DETAIL FOR FLARED END SECTIONS
CITY OF PLYMOUTH

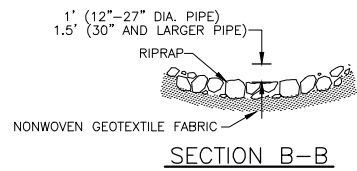
PUBLISHED 3-23
CITY PL. NO. ST-4
REVISED 1-17



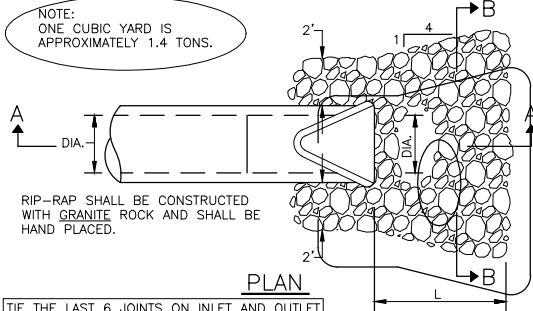
STANDARD DETAILS
STORM SEWER BEDDING
CITY OF PLYMOUTH

PUBLISHED 3-23
CITY PL. NO. ST-8
REVISED 3-12

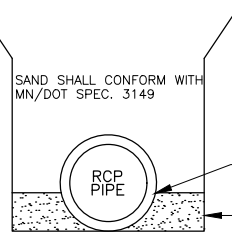
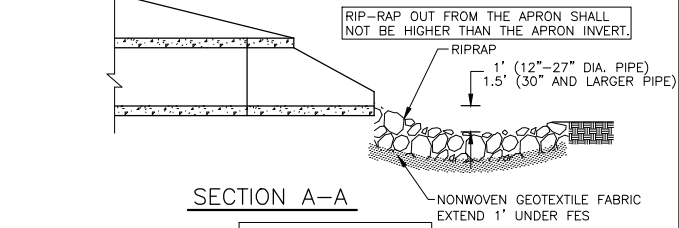
MINIMUM RIPRAP REQUIRED			
DIA. OF PIPE (IN.)	L (FT.)	QUANTITY (C.Y.)	CLASS
12	8	5	III
15	8	5	III
18	10	6	III
24	12	8	III
30	14	12	III
36	16	14	III
42	18	22	IV
48	20	26	IV
>48	22-28	30-40	IV



NOTE: ONE CUBIC YARD IS APPROXIMATELY 1.4 TONS.



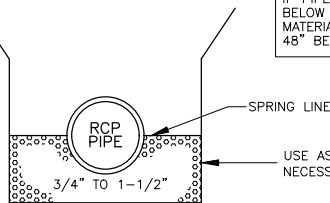
TIE THE LAST 6 JOINTS ON INLET AND OUTLET PIPES AND BED IN GRANULAR MATERIAL.



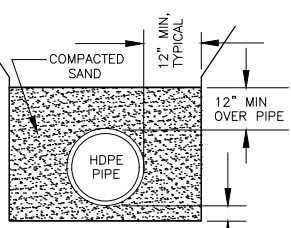
STABLE OR DRY CONDITIONS

COMPACTED SAND OR 3/4" TO 1-1/2" CLEAR ROCK (AS DIRECTED)

IF PIPE SPRING LINE IS LESS THAN 48" BELOW FINISHED GRADE, PLACE GRANULAR MATERIAL UNDER PIPE TO A MINIMUM OF 48" BELOW FINISHED GRADE.



UNSTABLE OR WET CONDITIONS



SAND BEDDING DETAIL FOR HDPE PIPE

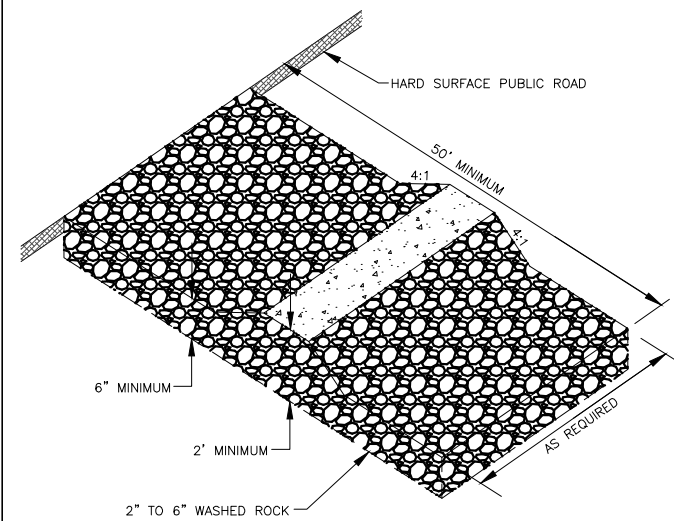
SAND SHALL CONFORM WITH MN/DOT SPEC. 3149.2B2

NOTE: USE OF HDPE PIPE BY PRIOR APPROVAL OF CITY ENGINEER ONLY.



STANDARD DETAILS
STORM SEWER BEDDING
CITY OF PLYMOUTH

PUBLISHED 3-23
CITY PL. NO. ST-8
REVISED 3-12



NOTES:

ROCK SHOULD BE 2" TO 6" IN SIZE SUCH AS WASHED ROCK OR CRUSHED CONCRETE

A GEOTEXTILE FABRIC MAY BE USED UNDER THE ROCK TO PREVENT MIGRATION OF THE UNDERLYING SOIL INTO THE STONE.

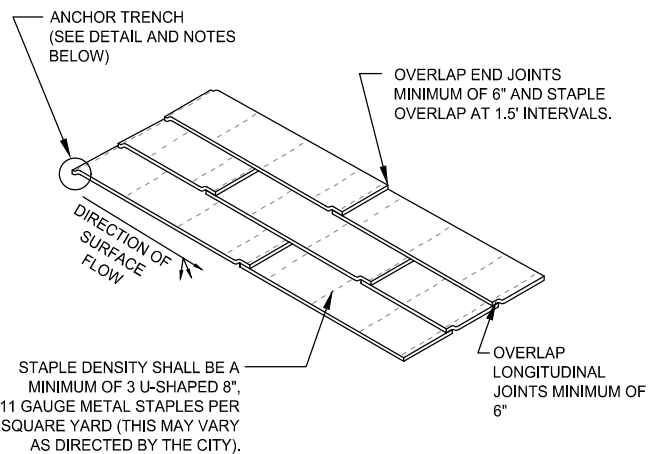


STANDARD DETAILS
ROCK EXIT TO CONSTRUCTION SITE
CITY OF PLYMOUTH

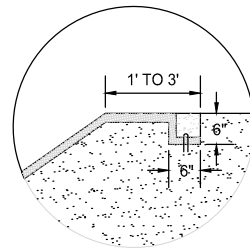
PUBLISHED 3-23
CITY PL. NO. ST-19
REVISED 1-20

EROSION CONTROL BLANKET INSTALLATION

SCALE: NOT TO SCALE



- ANCHOR TRENCH
1. DIG 6" X 6" TRENCH
 2. LAY BLANKET IN TRENCH
 3. STAPLE AT 1.5' INTERVALS
 4. BACKFILL WITH NATURAL SOIL AND COMPACT
 5. BLANKET LENGTH SHALL NOT EXCEED 100' WITHOUT AN ANCHOR TRENCH



SCALE: AS SHOWN SML
DESIGN BY: LGR
PLAN BY: CHECK BY: JHN

REVISIONS

NO.	DATE	DESCRIPTION

I HEREBY CERTIFY THAT THIS PLAN, SPECIFICATION, OR REPORT WAS PREPARED BY ME OR UNDER MY DIRECT SUPERVISION AND THAT I AM A DULY LICENSED PROFESSIONAL ENGINEER UNDER THE LAWS OF THE STATE OF MINNESOTA.

Laura Rescorla

LAURA RESCORLA

DATE: 08/30/2023 LIC. NO.: 58716

MISCELLANEOUS
DETAILS

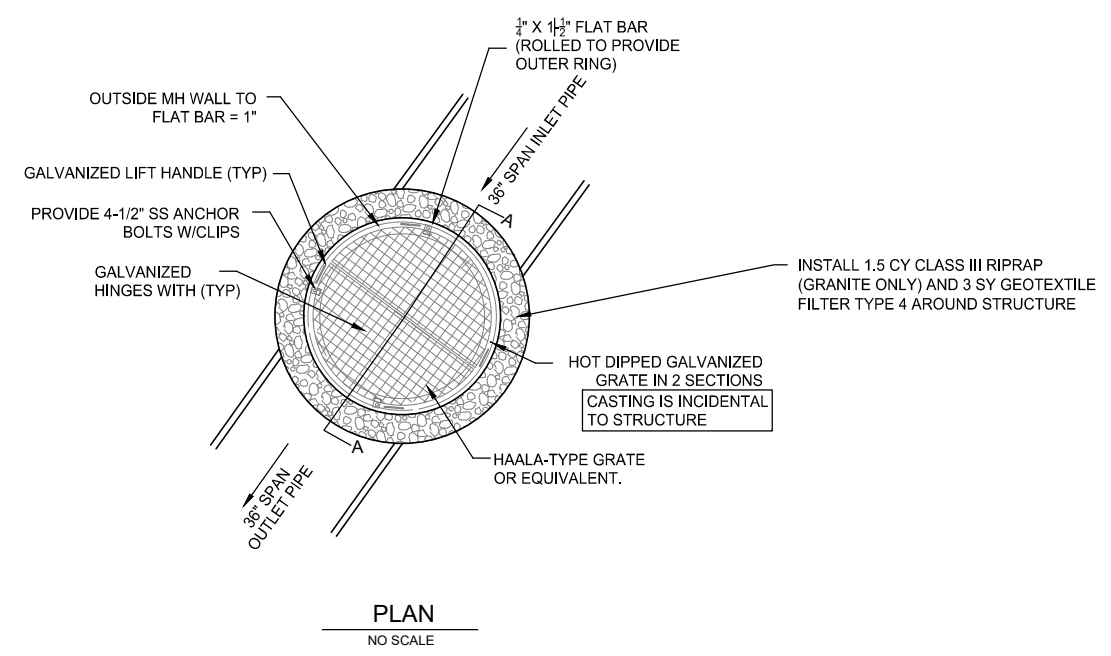
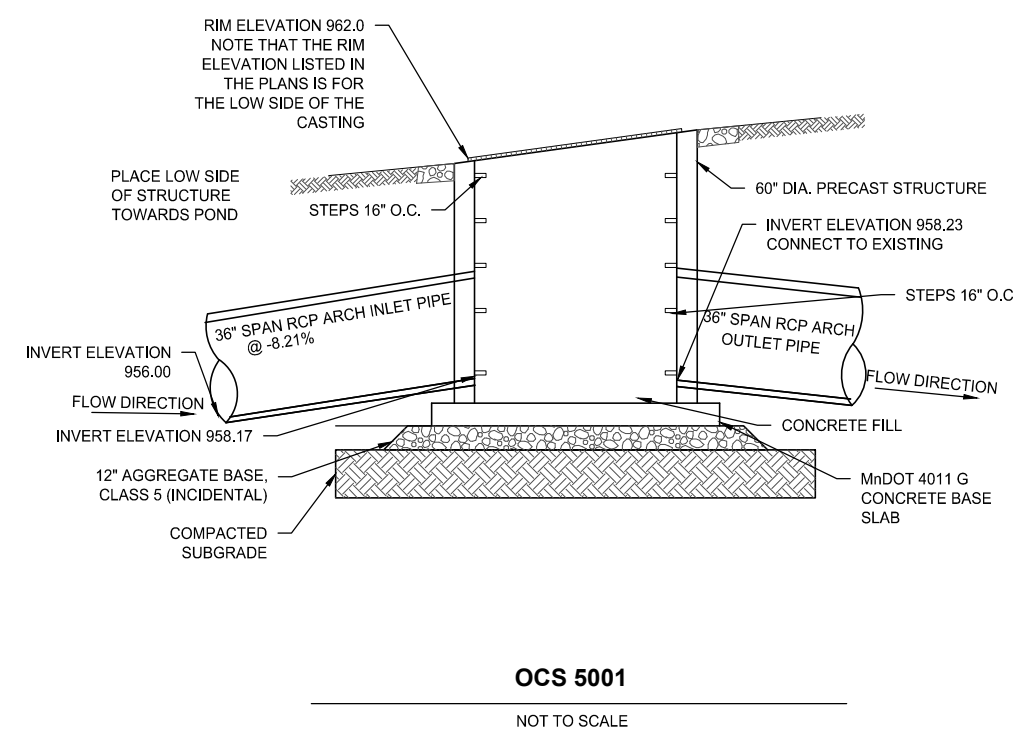
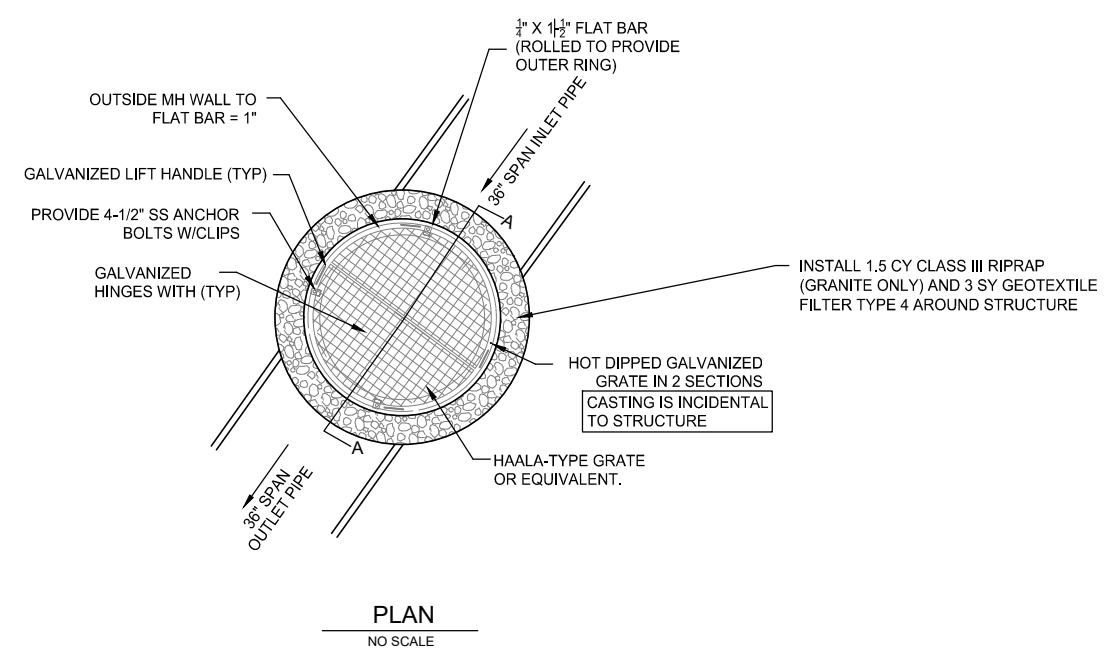
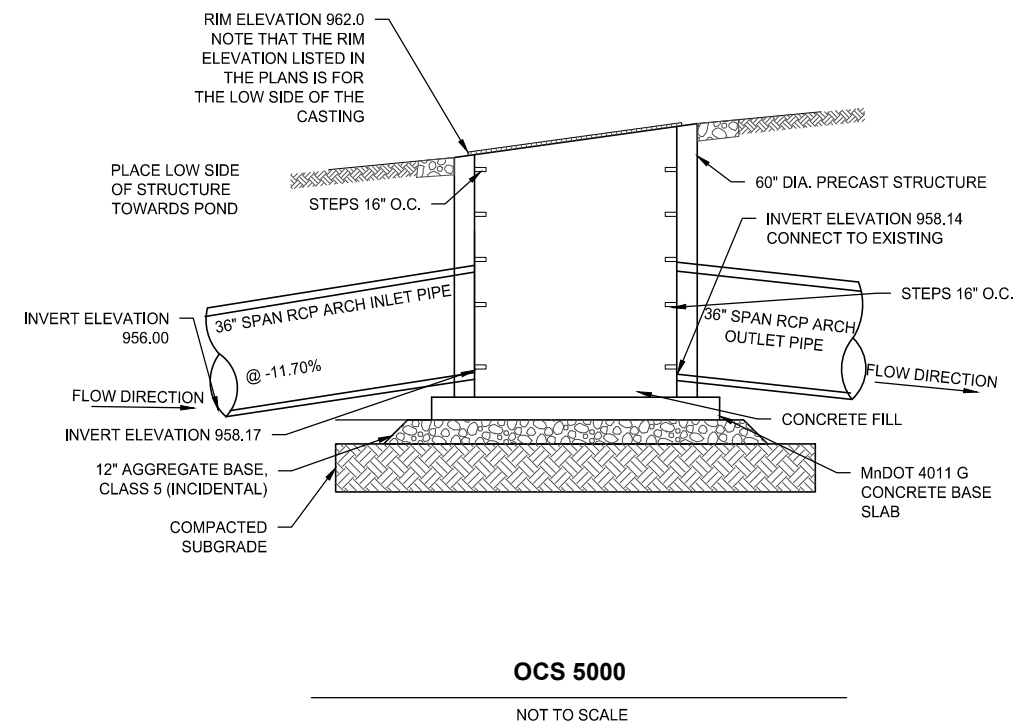
19TH AVE & DUNKIRK LN POND IMPROVEMENTS
CITY OF PLYMOUTH

CLIENT PROJECT NO.
WR190001

WSB PROJECT NO.
022133-000

SHEET

2 OF 4



NO.	DATE	DESCRIPTION

I HEREBY CERTIFY THAT THIS PLAN, SPECIFICATION, OR REPORT WAS PREPARED BY ME OR UNDER MY DIRECT SUPERVISION AND THAT I AM A DULY LICENSED PROFESSIONAL ENGINEER UNDER THE LAWS OF THE STATE OF MINNESOTA.

Laura Rescorla
LAURA RESCORLA
DATE: 08/30/2023 LIC. NO.: 58716

MISCELLANEOUS DETAILS

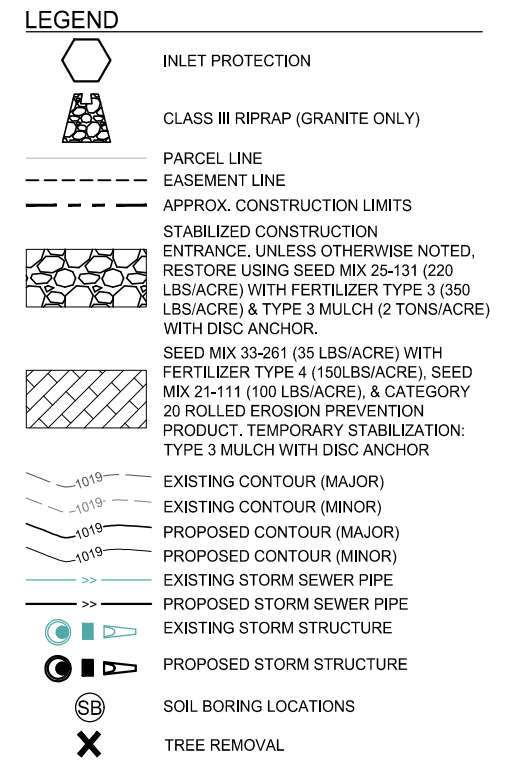
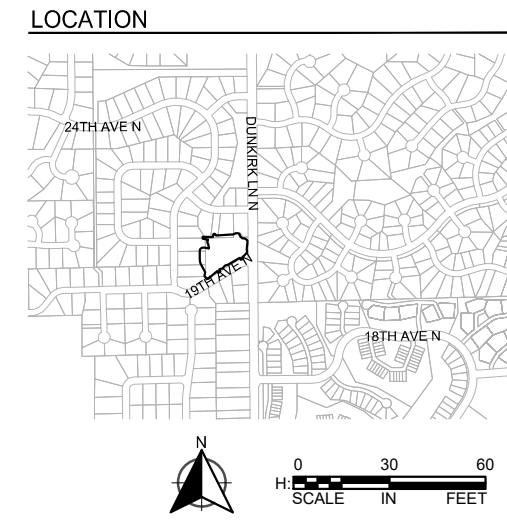
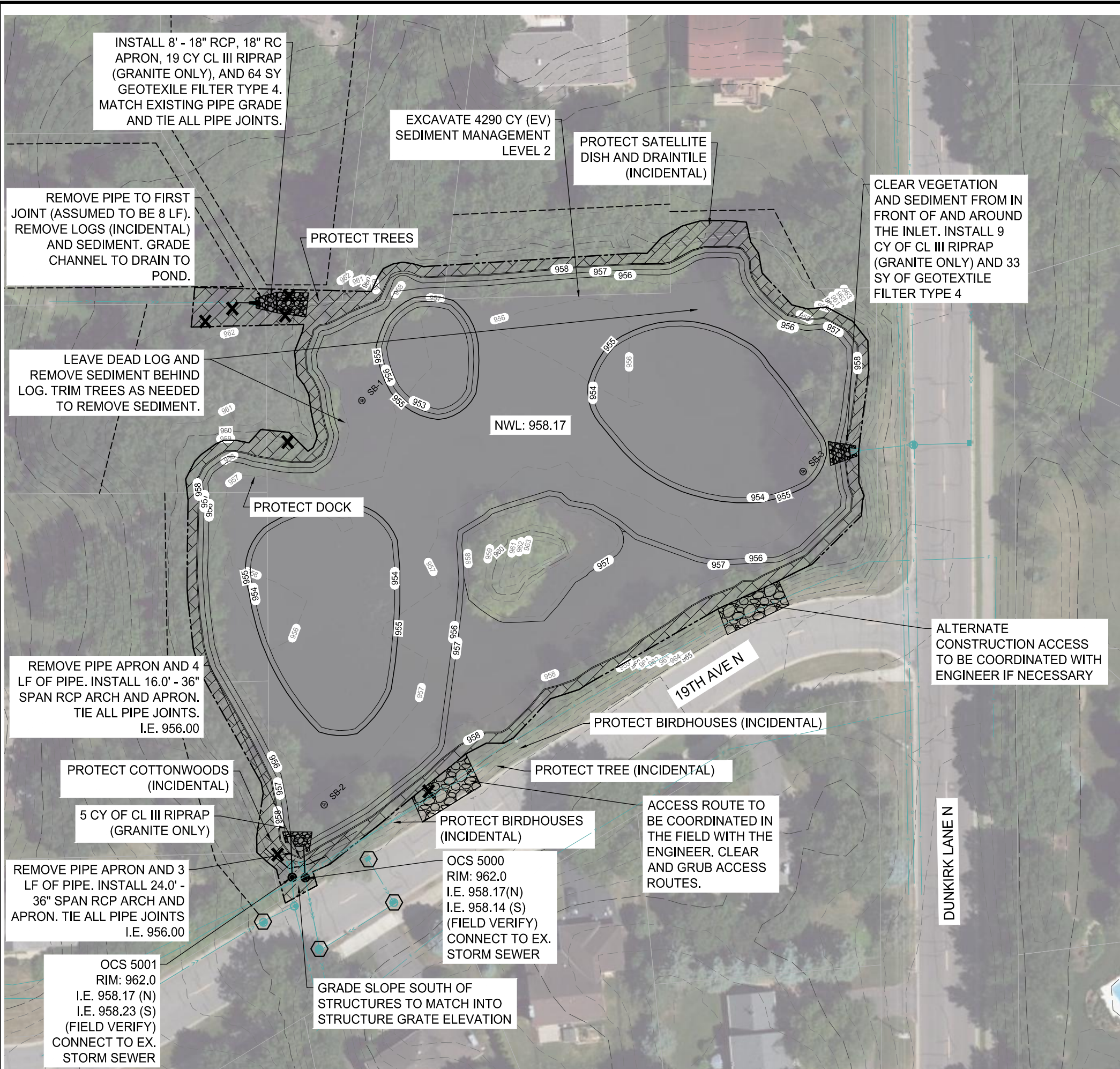
19TH AVE & DUNKIRK LN POND IMPROVEMENTS
CITY OF PLYMOUTH

CLIENT PROJECT NO. WR190001

WSB PROJECT NO. 022133-000

SHEET 3 OF 4

K:\022133-000\Cad\Plan\022133-000-C-GRAD-PLAN.dwg 9/11/2023 7:22:35 AM



- GENERAL CONSTRUCTION NOTES**
- RESTORE ALL POND EDGES AND WOODED AREAS WITH TYPE 33-261 SEED (35 LBS/AC), FERTILIZER TYPE 4 (150 LBS/ACRE), AND COVER CROP SEED MIX 21-111 (100 LBS/ACRE). CATEGORY 20 ROLLED EROSION PREVENTION PRODUCT WITH NATURAL NETTING SHALL BE INSTALLED ALONG POND EDGES, BUFFERS, AND NON-MOWABLE SLOPES AS DIRECTED BY THE ENGINEER IN THE FIELD. TEMPORARY STABILIZATION: TYPE 3 MULCH WITH DISC ANCHOR.
 - IN THE EVENT THAT RESTORATION CANNOT BE IMPLEMENTED WITHIN 7 DAYS AFTER CONSTRUCTION ACTIVITY IN THE DISTURBED AREA HAS CEASED, TEMPORARY EROSION STABILIZATION BMPs MUST BE SCHEDULED TO OCCUR WITHIN THAT 7 DAY TIME FRAME AND ARE INCIDENTAL TO THE COST.
 - CONTRACTOR RESPONSIBLE FOR THE DAMAGE TO STREETS, CONCRETE CURB AND GUTTER, SIDEWALKS, AND DRIVEWAYS.
 - DAILY STREET SWEEPING REQUIRED DURING HAULING OPERATIONS (INCIDENTAL TO MOBILIZATION) AND AS DIRECTED BY THE ENGINEER.
 - DEWATERING/DEICING TO TAKE PLACE PRIOR TO EXCAVATION. ICE IS TO BE STOCKPILED ON SITE AND PUT BACK IN POND FOLLOWING THE EXCAVATION. DEWATERING PLANS MUST BE DEVELOPED IN ACCORDANCE WITH SWPPP GUIDELINES AND IS INCIDENTAL TO THE COST.
 - CONTRACTOR SHALL PERFORM ALL DEWATERING AND EXCAVATION ONSITE AND OFF OF ROADWAY, AND LOAD AND HAUL OUT USING ACCESS ROUTE.
 - CONTRACTOR TO GRADE AROUND EXISTING STORM SEWER STRUCTURES AS DIRECTED BY THE ENGINEER.
 - CONTRACTOR TO COORDINATE ACCESS LIMITS WITH THE ENGINEER IN THE FIELD. CONTRACTOR SHALL ONLY REMOVE TREES AS MARKED ON PLANS AND APPROVED BY THE ENGINEER IN THE FIELD.
 - EXISTING POND CONTOURS DEVELOPED FROM PRE-DESIGN SURVEY.
 - MANAGEMENT LEVEL 2 INDICATES THAT SEDIMENT IS REGULATED MATERIAL SUITABLE FOR INDUSTRIAL OR COMMERCIAL REUSE ONLY.
 - FALLEN LOGS IN POND WILL BE REMOVED UNLESS OTHERWISE NOTED ON THE PLANS (INCIDENTAL).

wsb City of Plymouth

SCALE: AS SHOWN PLAN BY: SML DESIGN BY: LGR CHECK BY: JHN

NO.	DATE	DESCRIPTION

I HEREBY CERTIFY THAT THIS PLAN, SPECIFICATION, OR REPORT WAS PREPARED BY ME OR UNDER MY DIRECT SUPERVISION AND THAT I AM A DULY LICENSED PROFESSIONAL ENGINEER UNDER THE LAWS OF THE STATE OF MINNESOTA.

Laura Rescorla
LAURA RESCORLA
DATE: 08/30/2023 LIC. NO.: 58716

GRADING PLAN

19TH AVE & DUNKIRK LN POND IMPROVEMENTS
CITY OF PLYMOUTH

CLIENT PROJECT NO. WR190001

WSB PROJECT NO. 022133-000

SHEET 4 OF 4