



**Chelsea Woods Drainage  
Improvement Project  
WR-15-0004**

Neighborhood Information Meeting  
July 19, 2022





# Project Team

- **City of Plymouth**

- Ben Scharenbroich, Water Resources Supervisor
  - [bscharenbroich@plymouthmn.gov](mailto:bscharenbroich@plymouthmn.gov)
- Chris McKenzie, PE, Engineering Services Manager
  - [cmckenzie@plymouthmn.gov](mailto:cmckenzie@plymouthmn.gov)

- **Design Consultant, Barr Engineering**

- Heather Lau, PE
  - [hlau@barr.com](mailto:hlau@barr.com)
- Janna Kieffer, PE
  - [jkieffer@barr.com](mailto:jkieffer@barr.com)



# Chelsea Woods Drainage Improvement Project



# Project Timeline

Phase	Time
Resident Questionnaire	2020
Project Scoping & Resident Input	Spring 2022
Preliminary Design	Late Spring 2022
Resident Meeting #2	Summer 2022
Engineering Final Design	Late Summer/Fall 2022
Contractor Bidding	Fall 2023
Construction	Winter 2023/2024



# Resident Input

- Water level desires are variable
- Water quality noted as a concern
- Wildlife habitat has been noted as important
- Weirs and trails are important features to the neighborhood
- Bank erosion observed
- General maintenance of sediment and debris



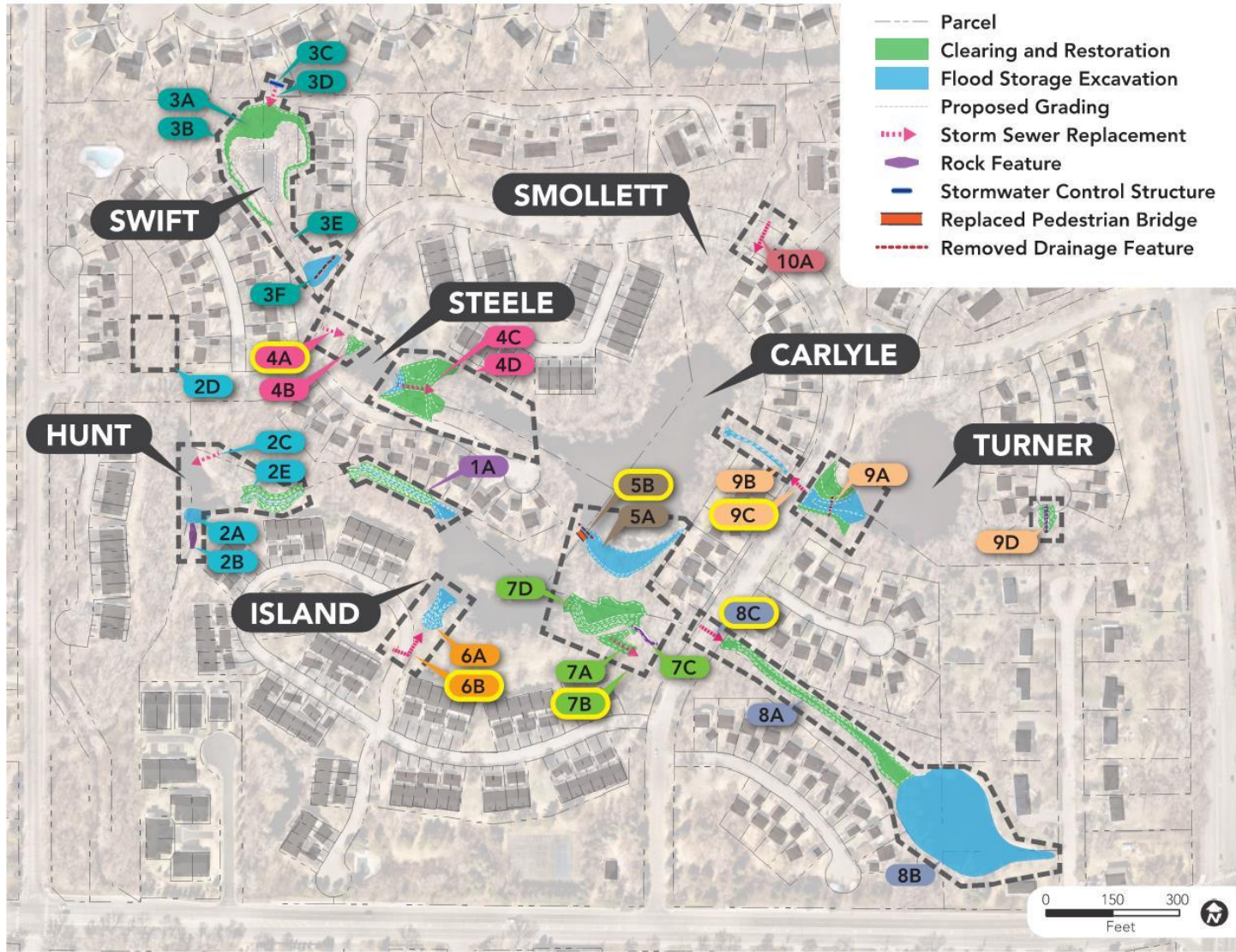


# City Identified Potential Improvements

- Address Weirs
- Perform Pond Maintenance
  - Address water quality
  - Address bank erosion
  - Removal of sediment and debris
- Consider localized drainage concerns
- Resident Input



# Chelsea Woods - Overall Plan



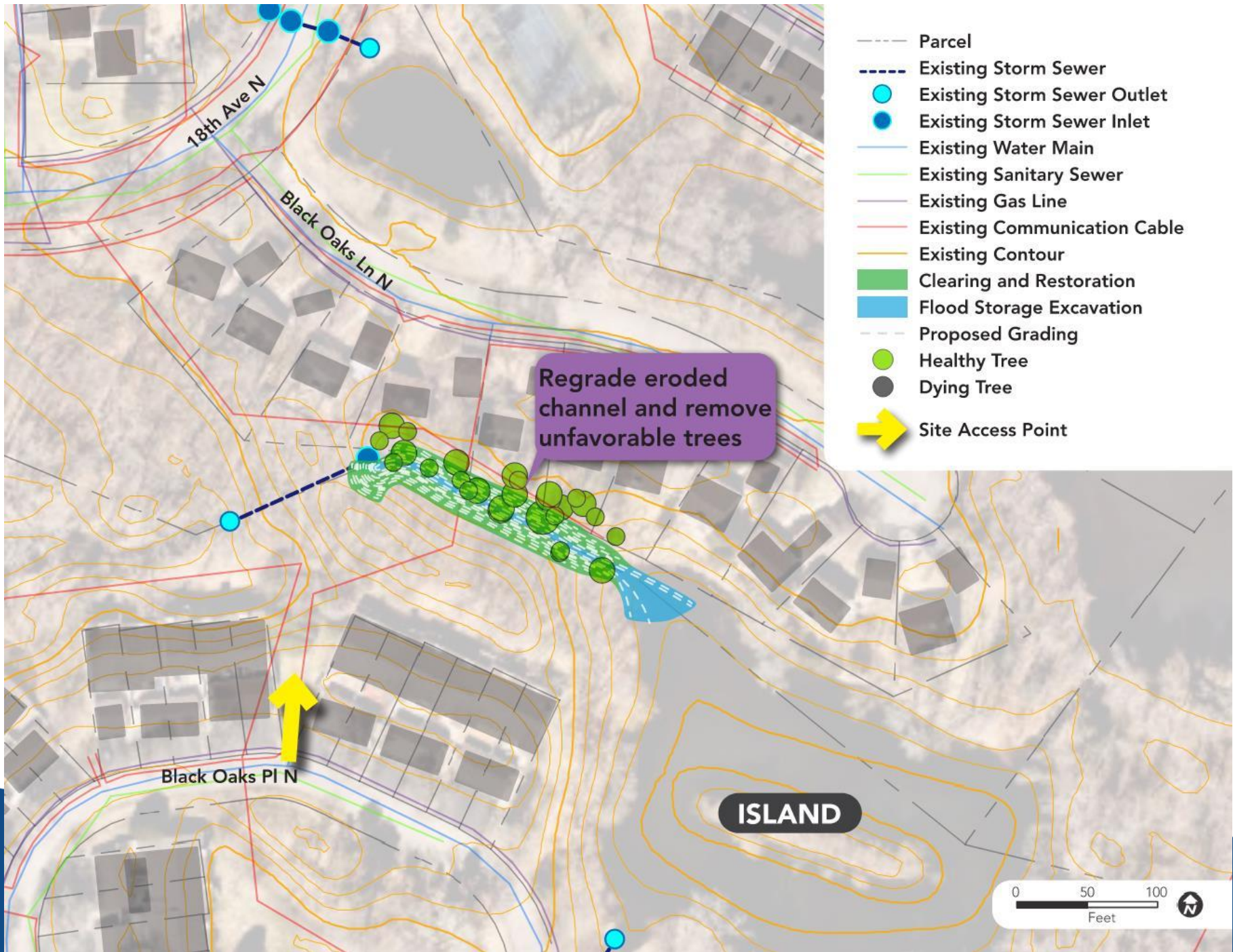
Project Location	Location Name	Description
1	Island Outlet	A. Regrade eroded channel and remove unfavorable trees
2	Hunt	A. Remove sediment at rock dike B. Restore rock dike C. Install high flow pipe to NE depression D. Clear out outlet on north side of 18th Avenue E. Regrade a meandering channel from Island outlet
3	Swift	A. Regrade side slopes and install native buffer B. Remove unfavorable trees to reduce canopy over pond C. Restore weir from upstream pond D. Replace pedestrian bridge with culvert E. Clear out channel downstream of pond F. Excavate flood storage (remove existing culvert)
4	Steele	A. Replace storm sewer crossing 18th Avenue B. Regrade channel into pond C. Replace pedestrian bridge with culvert D. Remove unfavorable trees
5	Carlyle	A. Excavate flood storage in the southeast and remove unfavorable trees B. Replace pedestrian bridge and weir with new stone bridge structure
6	Island	A. Dredge southwest inlet B. Replace storm sewer
7	Island Channel from Weston	A. Install high flow pipe to access depression to the southeast B. Remove unfavorable trees C. Armor stream bend where erosion may be occurring D. Regrade Island inlet channel
8	Channel from Weston	A. Clear out channel B. Dredge pond and channel from Weston Lane C. Replace storm sewer
9	Turner	A. Remove failed weir B. Dredge downstream channel C. Replace storm sewer D. Clean out debris and trees at cul-de-sac
10	Smollett	A. Clear out high flow double barrel pipe under 18th Avenue North

Note: HOA Cost Participation Projects are highlighted in yellow



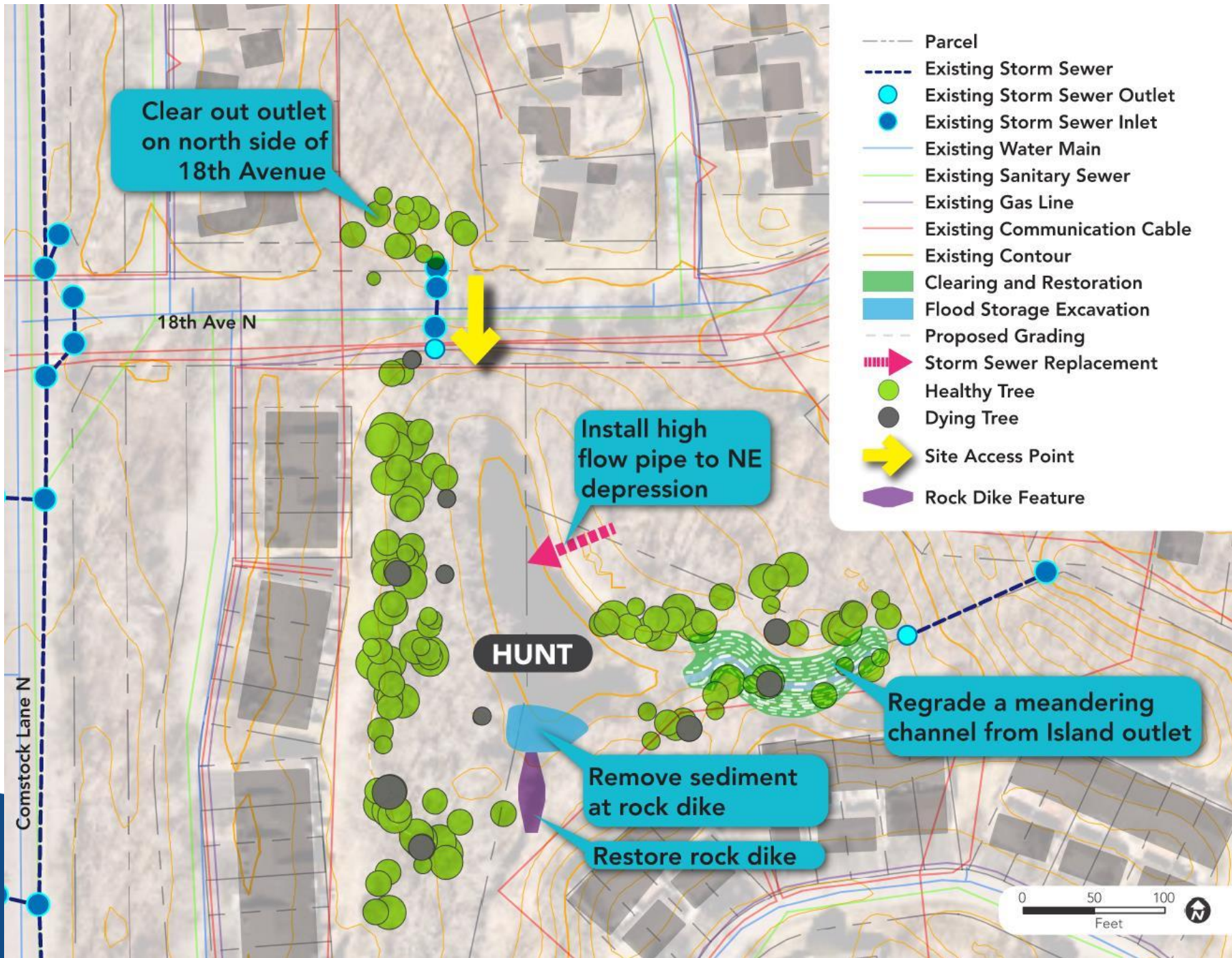


# Island Outlet Channel



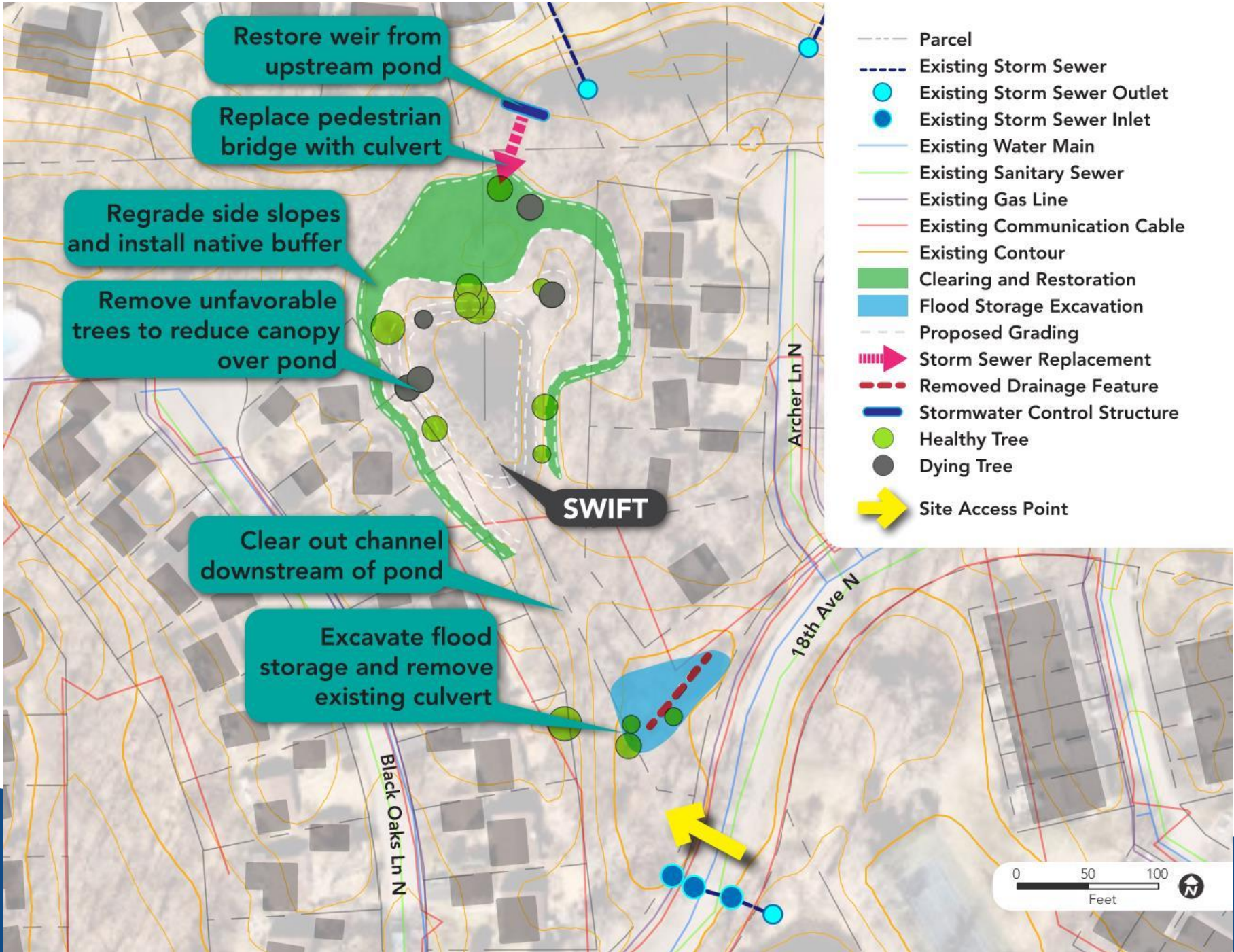


# Hunt



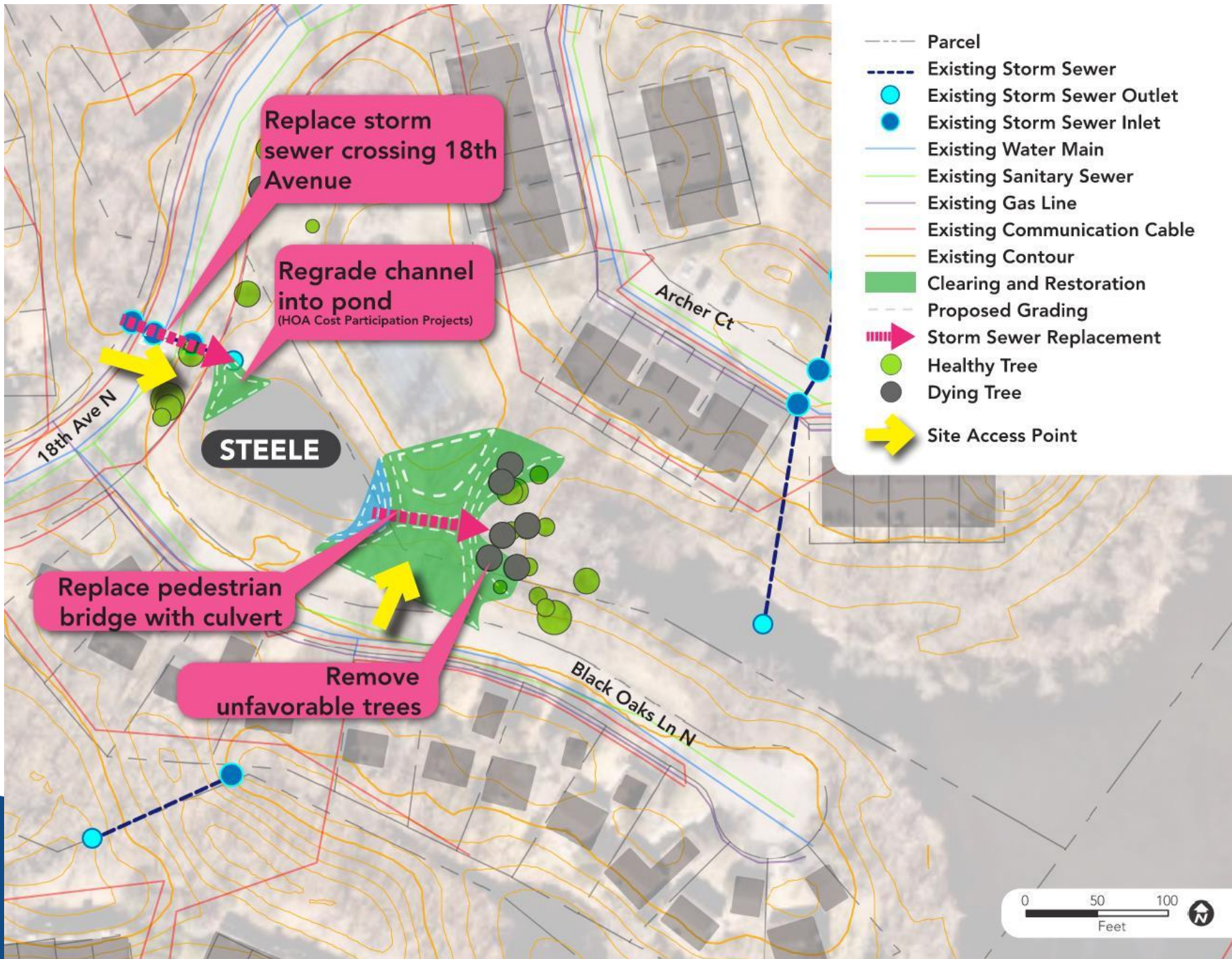


# Swift



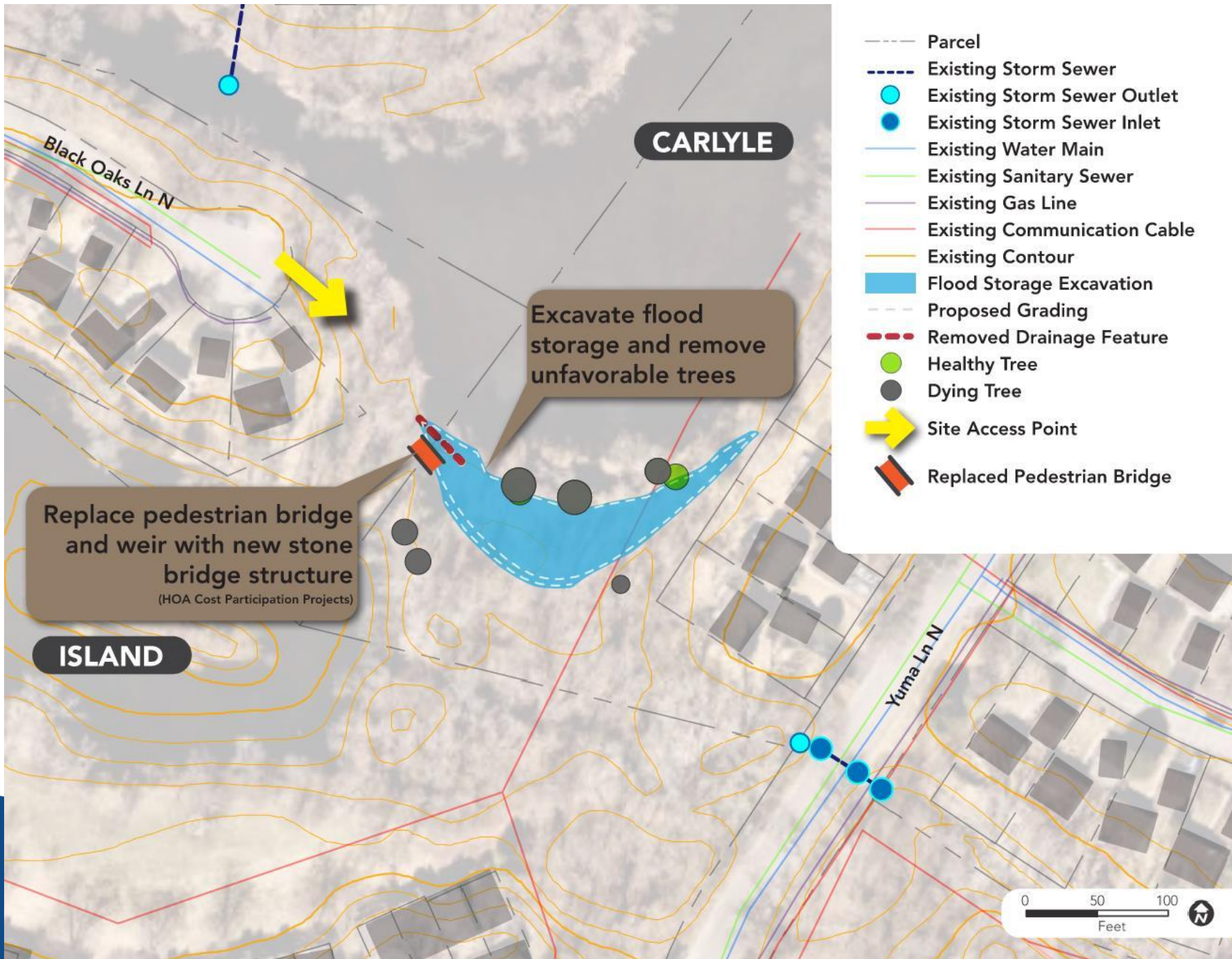


# Steele



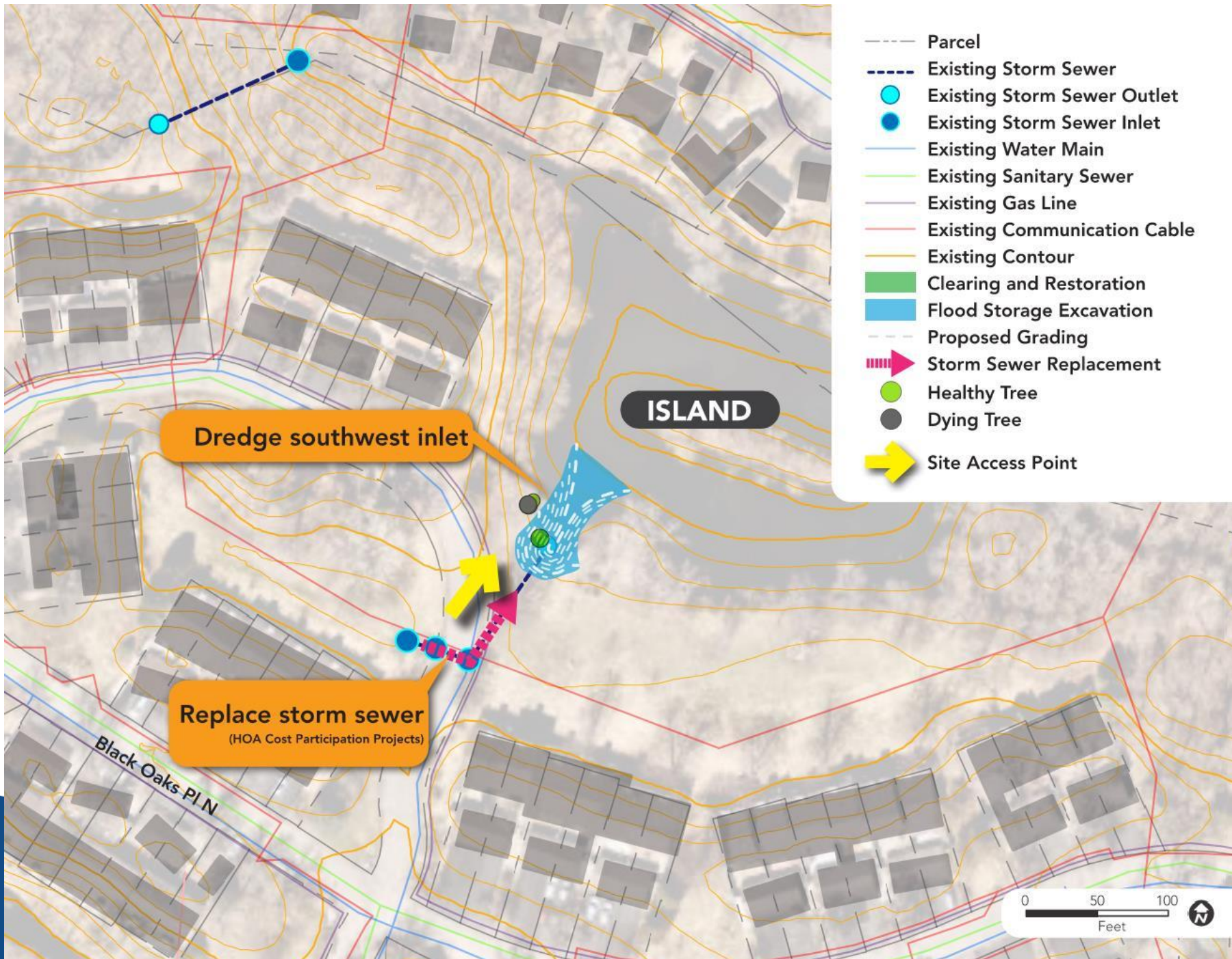


# Carlyle



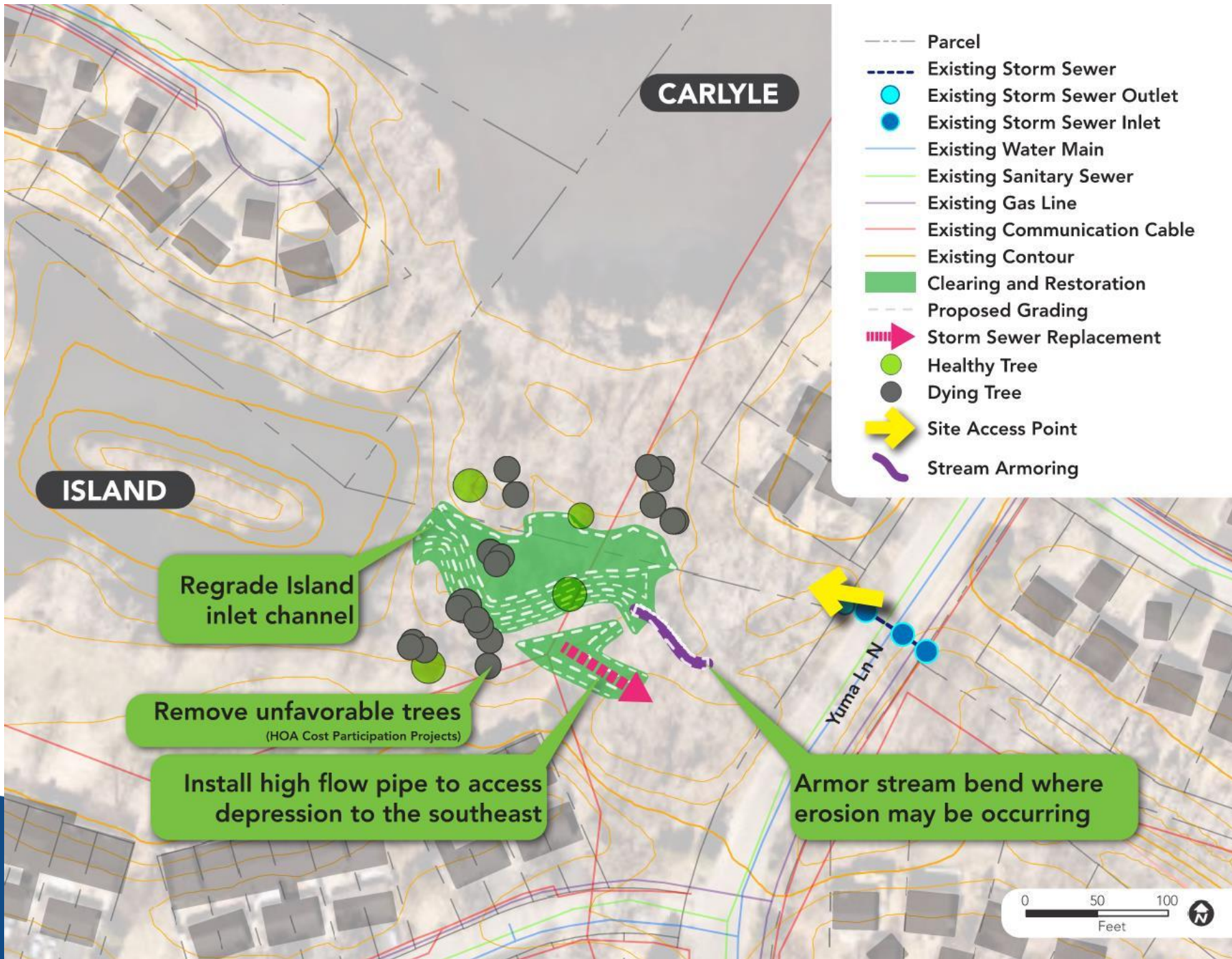


# Island SW Channel



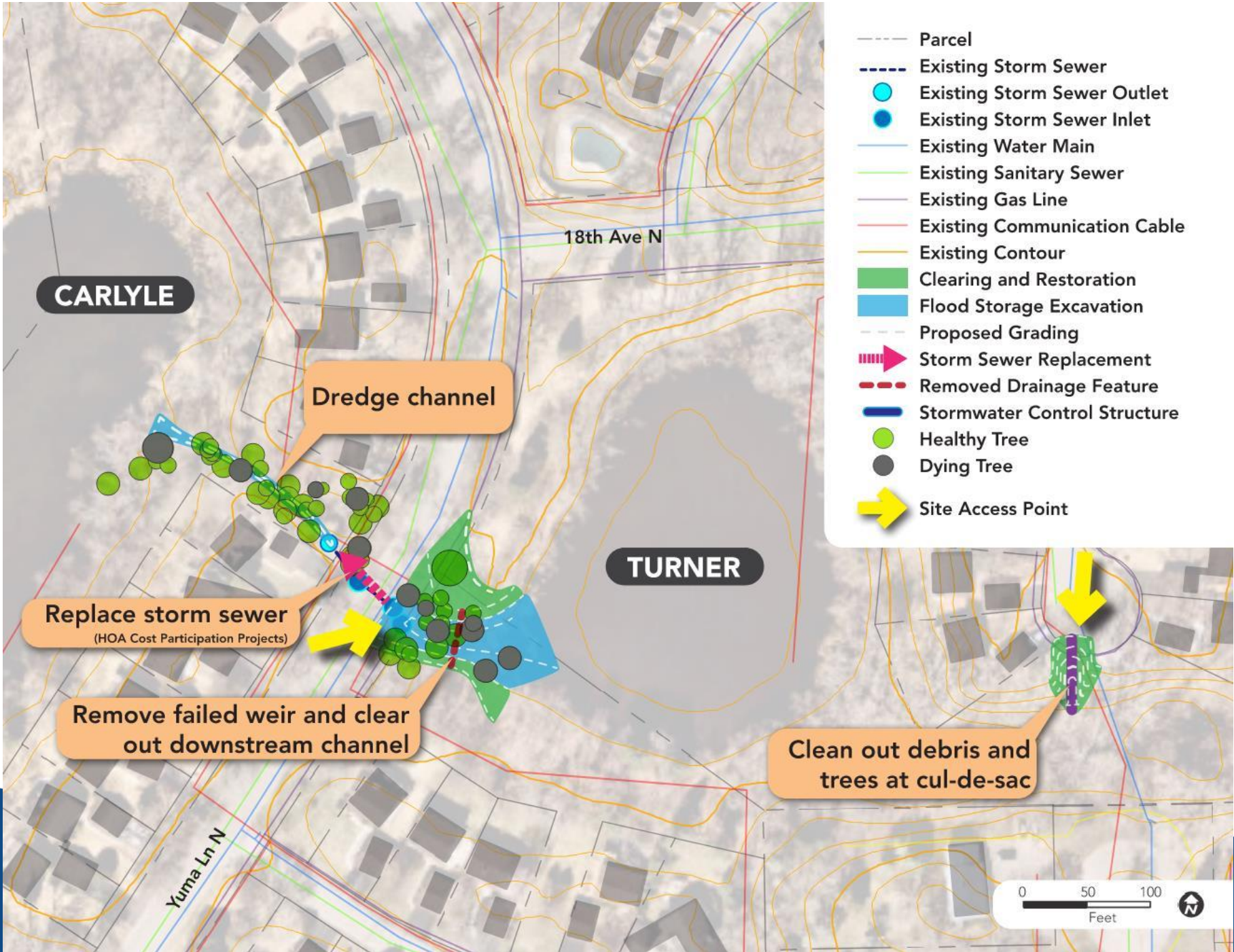


# Island SE Channel

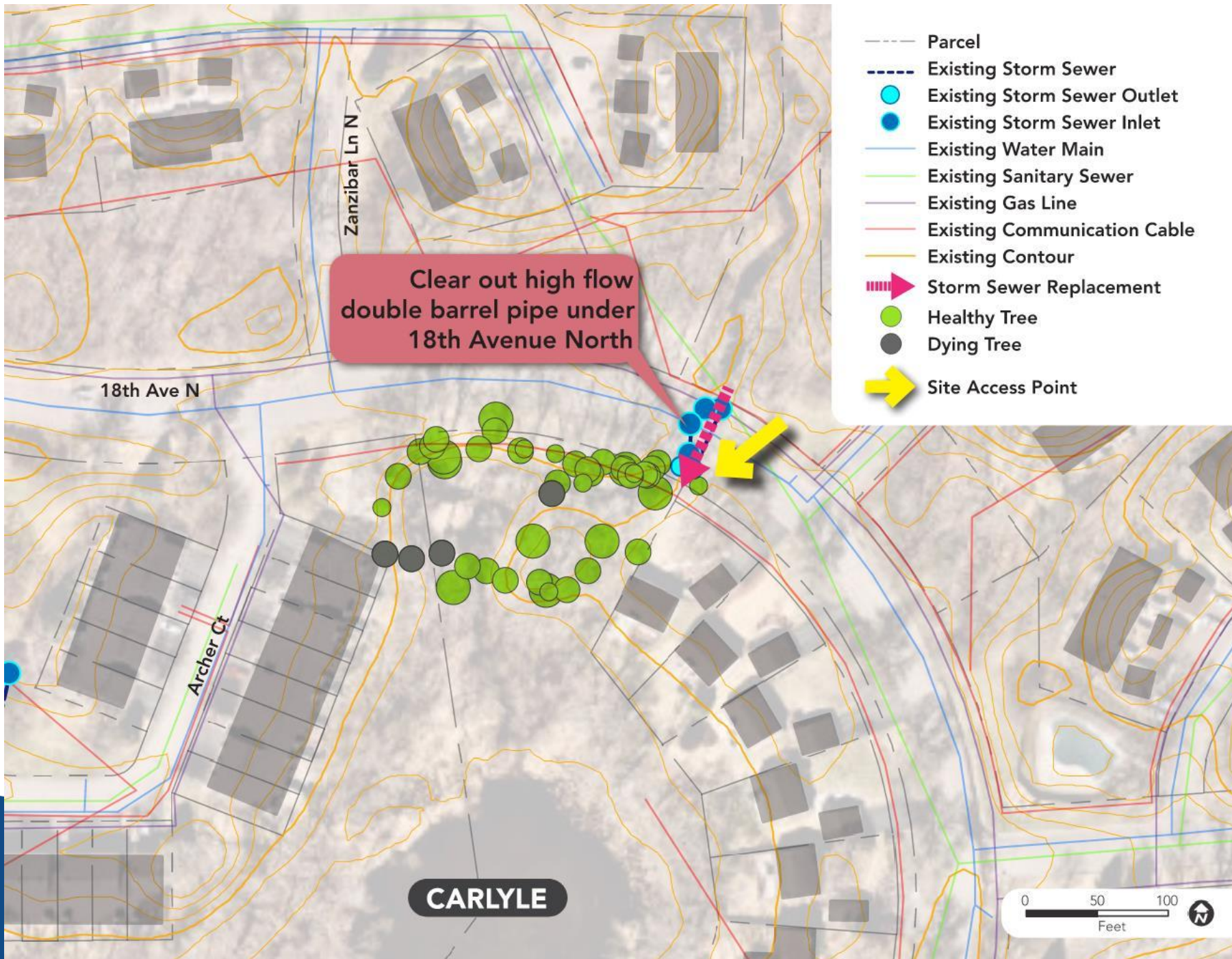




# Turner









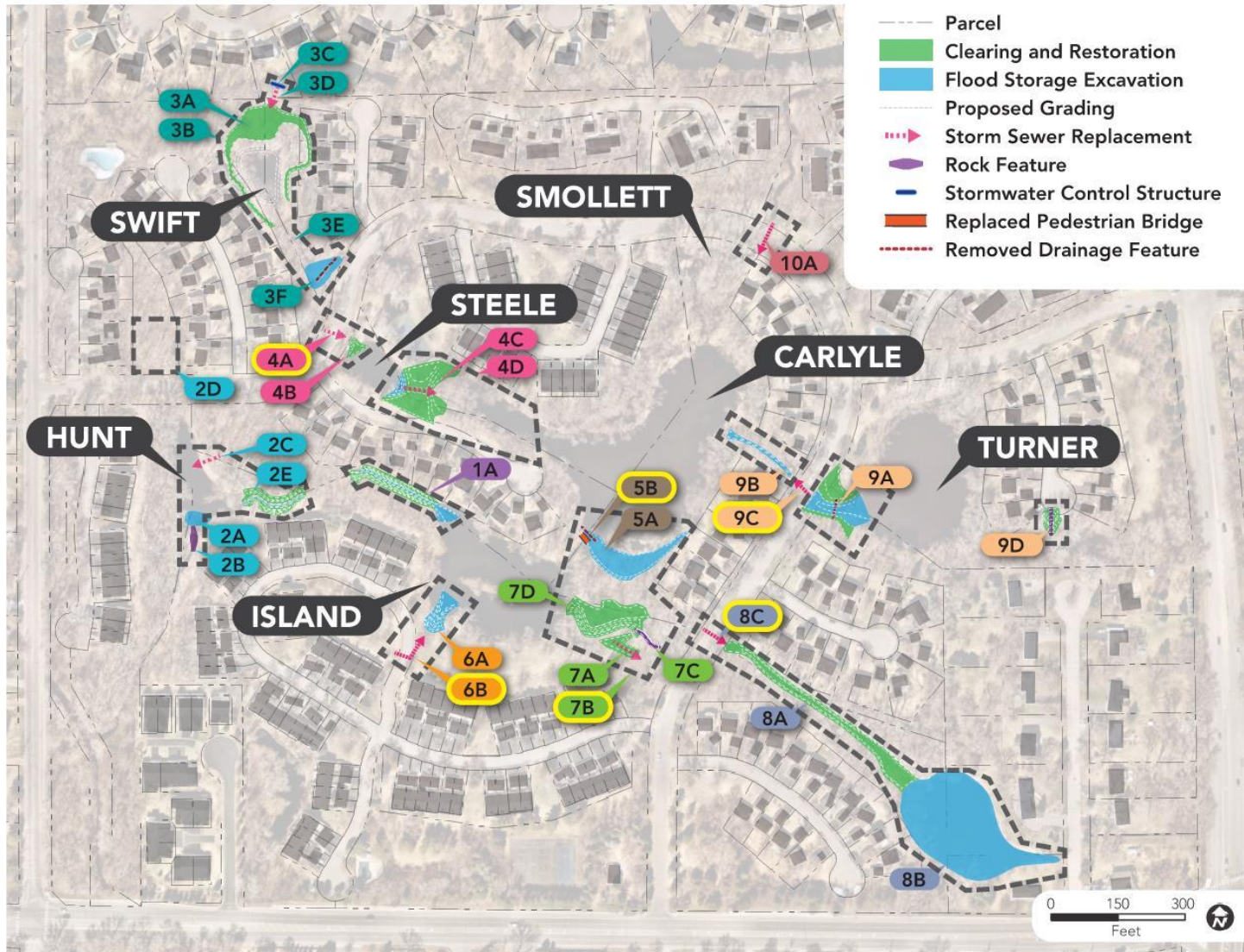
# Questions or Comments?

- Ben Scharenbroich, Water Resources Supervisor
  - [bscharenbroich@plymouthmn.gov](mailto:bscharenbroich@plymouthmn.gov)
  - (763) 509-5527
- Chris McKenzie, PE, Engineering Services Manager
  - [cmckenzie@plymouthmn.gov](mailto:cmckenzie@plymouthmn.gov)
  - (763) 509-5513





# Chelsea Woods Drainage Improvement Project



Project Location	Location Name	Description
1	Island Outlet	A. Regrade eroded channel and remove unfavorable trees
2	Hunt	A. Remove sediment at rock dike B. Restore rock dike C. Install high flow pipe to NE depression D. Clear out outlet on north side of 18th Avenue E. Regrade a meandering channel from Island outlet
3	Swift	A. Regrade side slopes and install native buffer B. Remove unfavorable trees to reduce canopy over pond C. Restore weir from upstream pond D. Replace pedestrian bridge with culvert E. Clear out channel downstream of pond F. Excavate flood storage (remove existing culvert)
4	Steele	A. Replace storm sewer crossing 18th Avenue B. Regrade channel into pond C. Replace pedestrian bridge with culvert D. Remove unfavorable trees
5	Carlyle	A. Excavate flood storage in the southeast and remove unfavorable trees B. Replace pedestrian bridge and weir with new stone bridge structure
6	Island	A. Dredge southwest inlet B. Replace storm sewer
7	Island Channel from Weston	A. Install high flow pipe to access depression to the southeast B. Remove unfavorable trees C. Armor stream bend where erosion may be occurring D. Regrade Island inlet channel
8	Channel from Weston	A. Clear out channel B. Dredge pond and channel from Weston Lane C. Replace storm sewer
9	Turner	A. Remove failed weir B. Dredge downstream channel C. Replace storm sewer D. Clean out debris and trees at cul-de-sac
10	Smollett	A. Clear out high flow double barrel pipe under 18th Avenue North

Note: HOA Cost Participation Projects are highlighted in yellow

