



Keeping lakes and streams healthy

Joel Spoonheim

Member, Plymouth Environmental Quality Commission



Three main threats to lakes and streams

- Phosphorus
 - Sources: agriculture, urban runoff, leaking septic systems, sewage discharges
- Aquatic invasive species (<https://www.dnr.state.mn.us/invasives/index.html>)
 - Zebra mussels, spiny waterflea, carp
 - Starry Stonewort, Curly-leaf pondweed, Eurasian water milfoil
- Chloride/Salt

**ON AIR** 0:00

1A with Jenn White

Study: Salty lakes in Twin Cities mean no fish by 2050

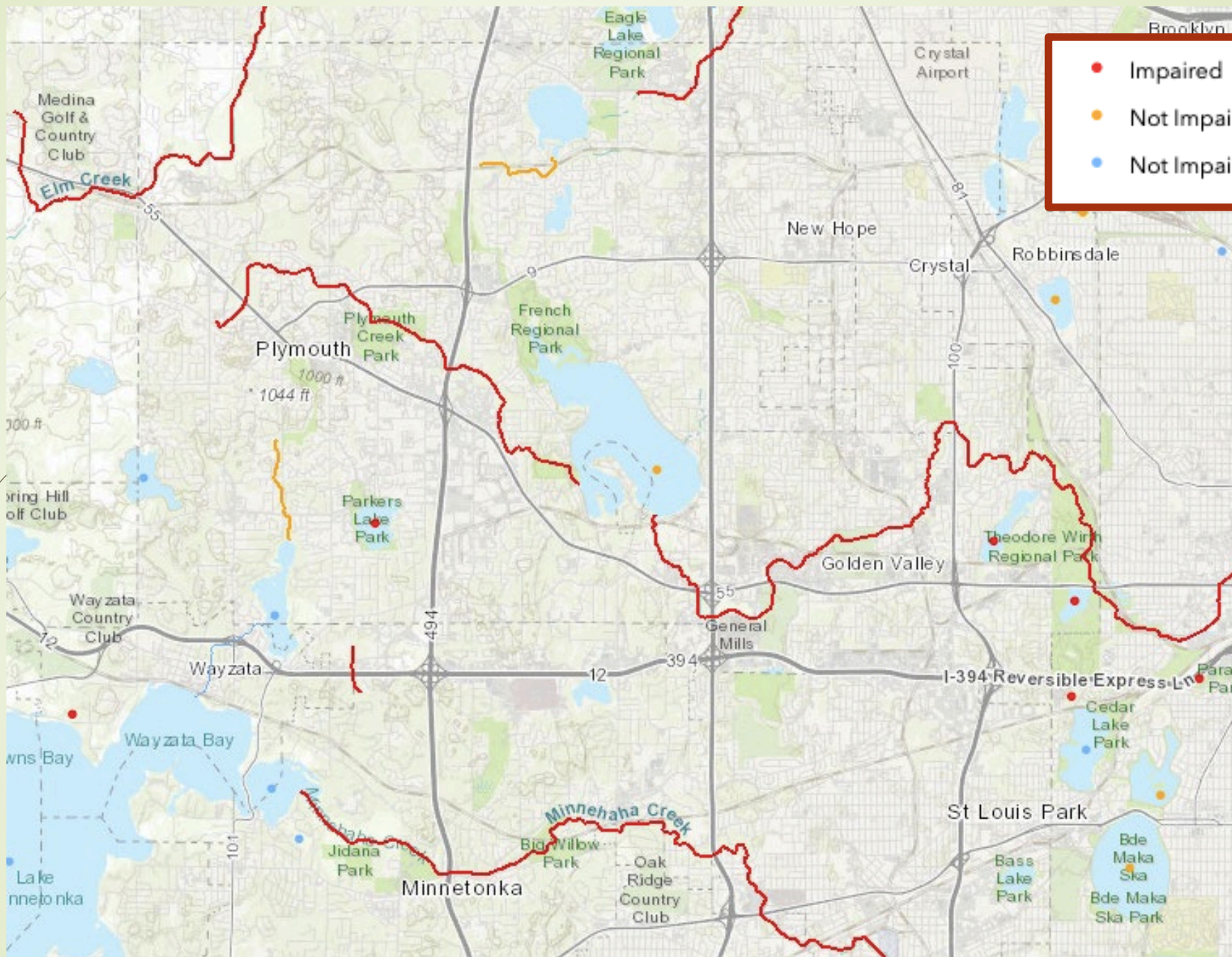
Tom Weber and Jo Erickson April 19, 2017 5:00 a.m.

Share

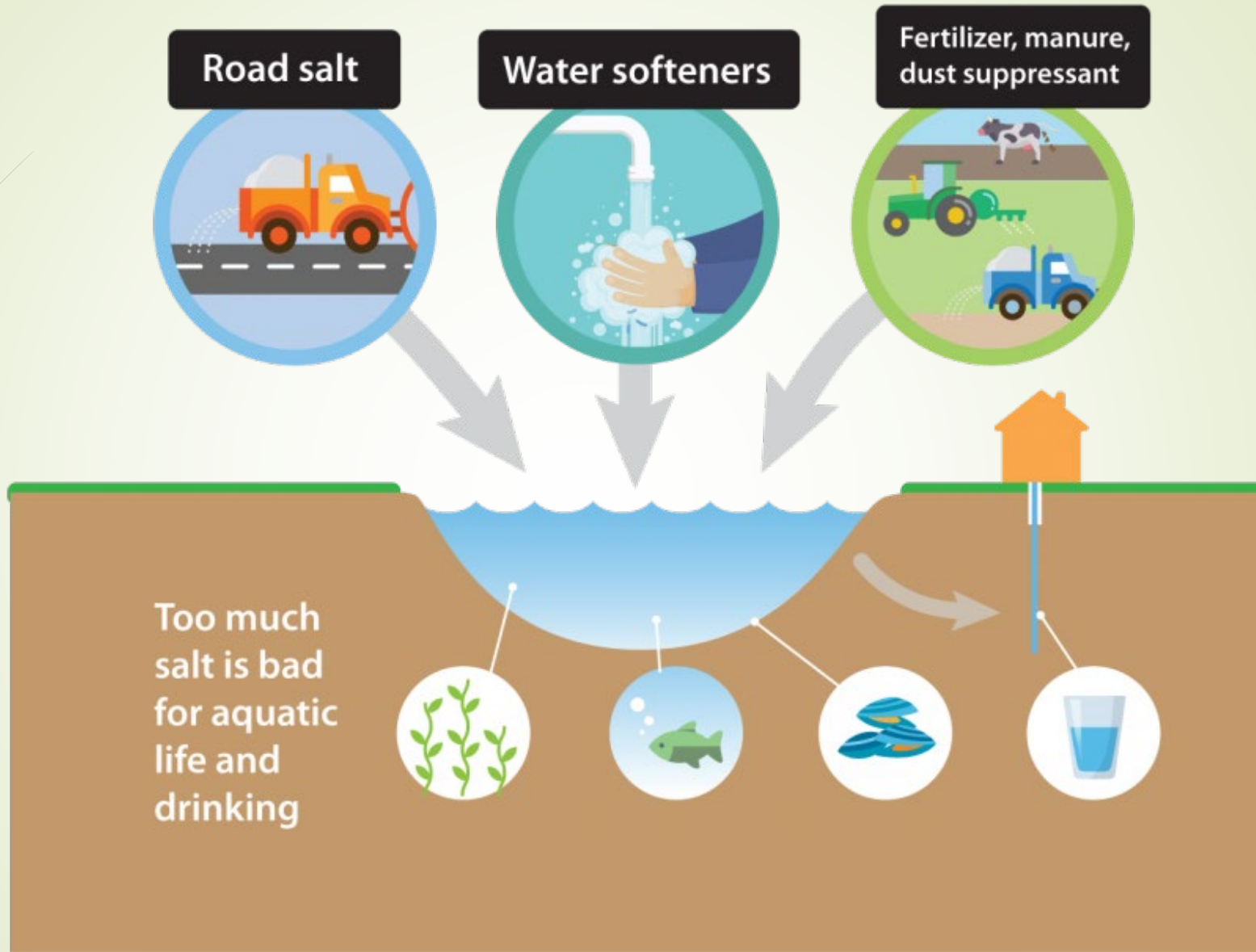


- [Subscribe to the MPR News with Tom Weber podcast](#)

Recently published research revealed that Twin Cities lakes have increasing amounts of road salt runoff. It predicts by 2050 lakes will no longer support native fish and plants.



- Impaired
- Not Impaired - High Risk
- Not Impaired





Other impacts

- ▶ **Drinking water** — Salt has contaminated groundwater in some areas of the state; 75% of Minnesotans rely on groundwater for drinking water. Twenty-seven percent of monitoring wells in the Twin Cities metro area's shallow aquifers had chloride concentrations that exceeded EPA drinking water guidelines.
- ▶ **Infrastructure** — Chloride corrodes road surfaces and bridges and damages reinforcing rods, increasing maintenance and repair costs.



Prevention

- ▶ 1 teaspoon permanently pollutes 5 gallons of water
 - ▶ 48 tsp per cup
 - ▶ 3 cups pollutes 720 gallons = 5'x5'x4'
- ▶ Shovel during storms to prevent compaction and ice formation
- ▶ Sweep up excess salt
- ▶ Salt doesn't work when it's too cold
- ▶ Get places you visit to use Smart Salting Certified services (MN Pollution Control Agency)



Questions?



Next Up

- ▶ Fill out your survey
- ▶ Share salt educational video with friends:
<https://mpca.maps.arcgis.com/apps/webappviewer/index.html?id=f5baf4d28e2f43ba804938136e1bd534>
- ▶ Rake your leaves out of gutters
- ▶ Next meeting:
 - ▶ November 16: Home Updating