

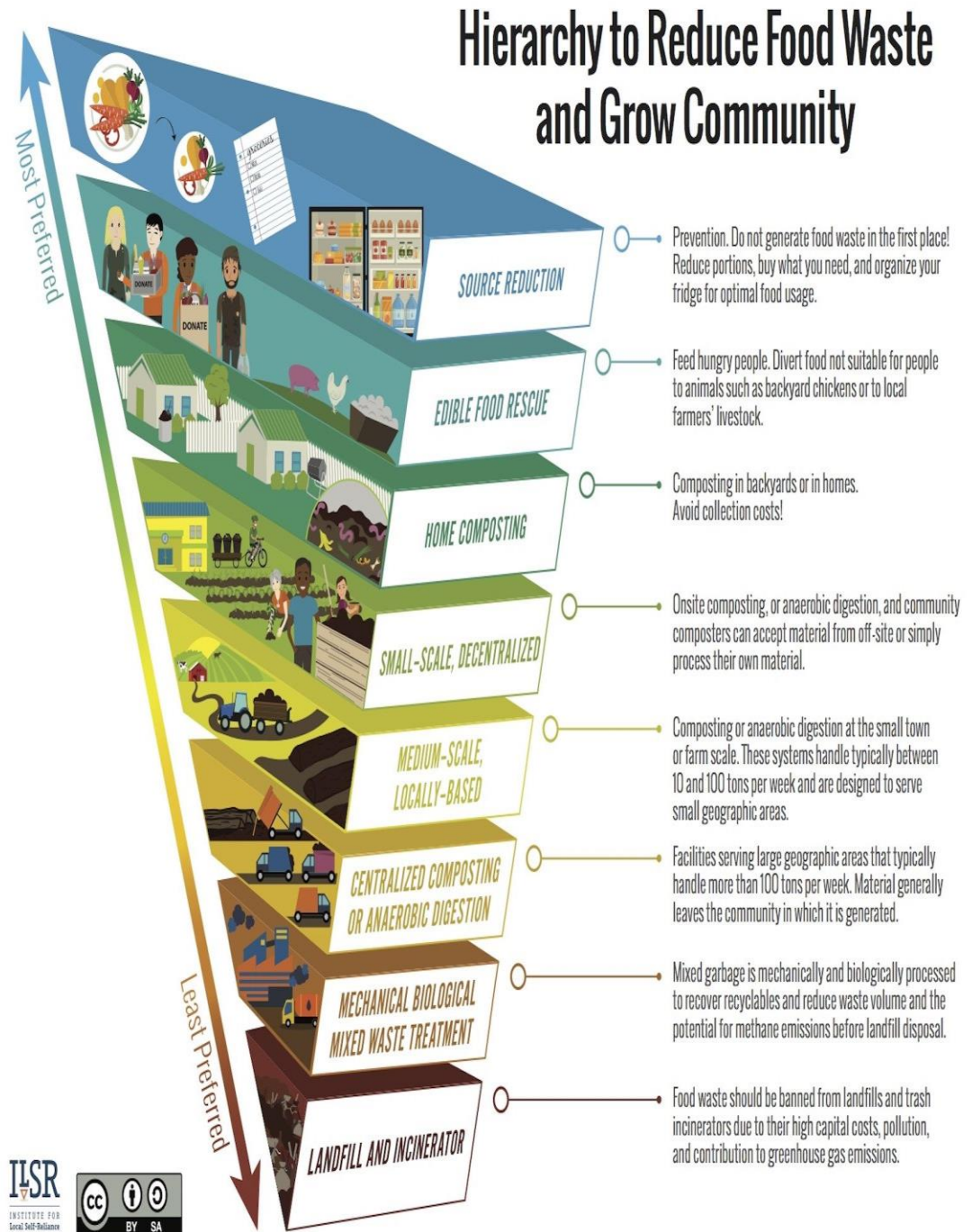
Composting in Your Backyard

Ginny Black

Minnesota Composting Council, Chair
Compost Research & Education Foundations

Food Recovery Hierarchy

- ▶ 40% of the food produced in the U.S. never gets eaten
- ▶ 18% of waste going to landfills in MN is food
- ▶ \$1,500/yr what the average U.S. family of 4 spends on food they do not eat



Practical steps to reduce food waste in your home!

Reduce food waste

Plan your meals

Prepare only what you need

Share with others

Reuse your prepared foods

Shop in your refrigerator

Eat leftovers for lunch

Create a broth bag for scraps

Freeze leftovers for later

Recycle unused food

Create a backyard compost site

Use the compost in your garden

Sign up for organics pick up



Backyard vs. Commercial

- ▶ Backyard composting
 - ▶ Cold process
 - ▶ Limited types of materials
 - ▶ Does not kill pathogens and weed seeds
- ▶ Commercial
 - ▶ Hot process
 - ▶ Wider a ray of materials
 - ▶ Kills pathogens and weed seeds

Compost Science

- ▶ Biology
- ▶ Geology
- ▶ Physics

What is Soil?

- ▶ Organic matter
- ▶ Ground up rock
 - ▶ Clay
 - ▶ Sand
- ▶ Micro-organisms
- ▶ Air (25%)
- ▶ Water (25%)

Benefits of Compost

- ▶ Water holding capacity
- ▶ Slow release of nutrients
- ▶ Natural pesticide
- ▶ Healthier root structure

Location of Bin/Pile

- ▶ Convenient
 - ▶ Won't compost if you have to troop out to the outback of the yard
 - ▶ Sun/shade makes no difference
- ▶ Close to a water source
- ▶ Check local ordinances

Compost Process

▶ Creating an environment for living creatures:

▶ Greens

▶ Browns

▶ Water

▶ Air



Compostable Materials (Greens)

- ▶ Food
 - ▶ Vegetable scraps
 - ▶ Fruit scraps
 - ▶ Some types of paper
 - ▶ (napkins, paper towels,
 - ▶ Non-recyclable paper
 - ▶ Grass clippings if green



Compostable Materials (Browns)

- ▶ Leaves
- ▶ Straw
- ▶ Paper
 - ▶ coffee filters, tea bags, napkins, paper towels, tissue paper...
- ▶ Brown grass clipping
- ▶ Small wood waste
 - ▶ (2-3 inches in length/diameter)

Unacceptable Materials

(for backyard composting)

- ▶ Dairy
- ▶ Fats, oils, grease
- ▶ Pet waste
- ▶ Heavier types of paper (cardboard, boxboard..)
- ▶ Pine needles
- ▶ Black Walnut leaves

Note: commercial composting can take all these materials.

Common Questions

- ▶ What kind of bin should I use?
- ▶ How long does it take?
- ▶ Why isn't it composting?
- ▶ How do I know if I have enough water?
- ▶ Why do I have critters in my compost?
- ▶ How do I winterize my compost?



How to Use Compost

- ▶ Flowerpots
- ▶ Top dress around outdoor plants
- ▶ Work into soil before planting
- ▶ Top dress bare spots in lawn with seed and compost



Thank You! Happy Composting.

