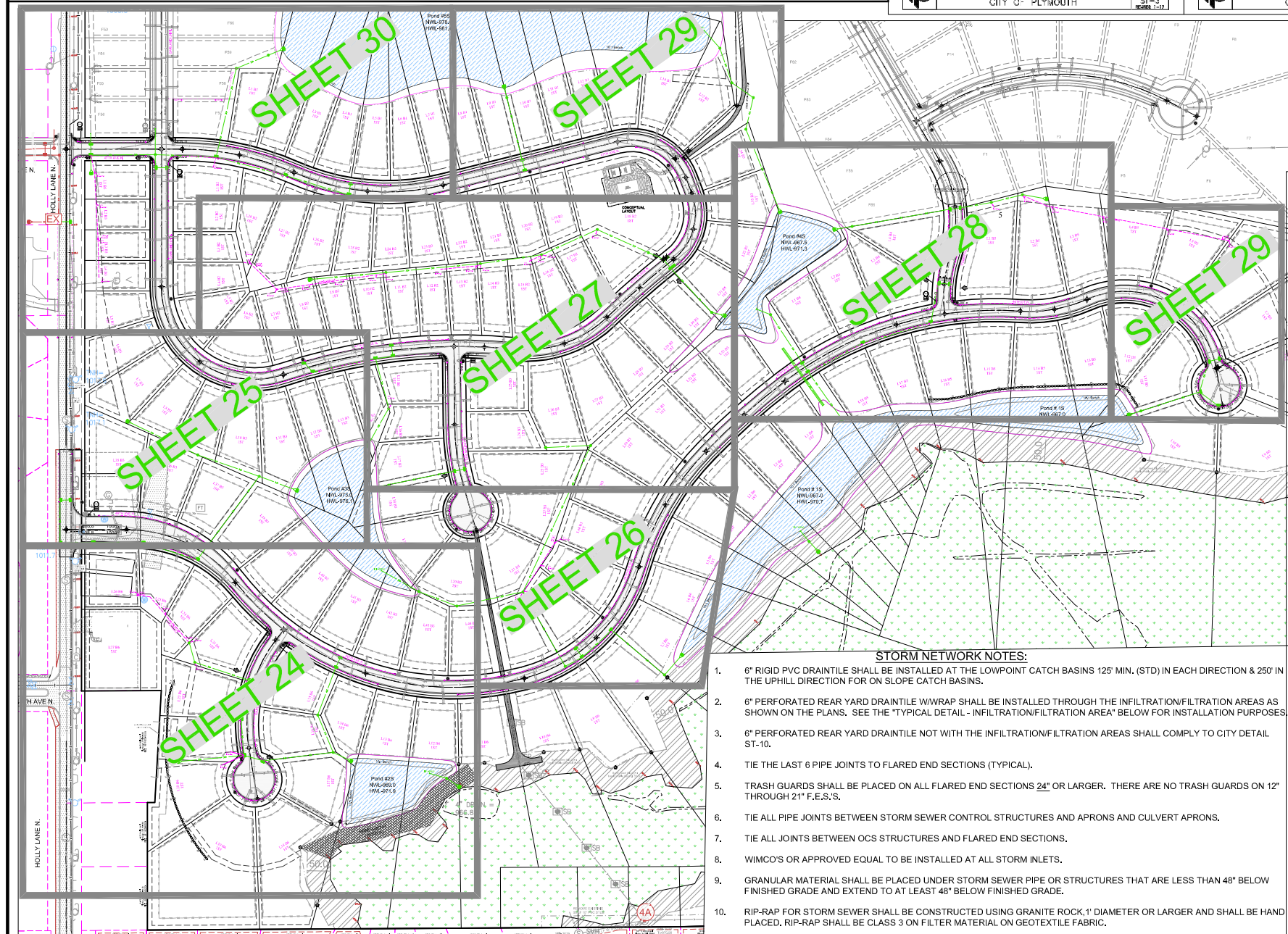


FES TABLE				
Structure Name	TYPE	SIZE (IN.)	INV	C.Y. RIP RAP
A1	FES	18	978.0	6
A20	FES	15	1000.0	5
F1	FES	24	967.5	8
F7	FES	15	983.0	5
G1	FES	15	967.0	5
H1	FES	24	967.0	8
I1	FES	18	969.0	6
I14	FES	15	985.0	5
J1	FES	21	973.0	7
J4	FES	15	994.0	5
K1	FES	15	973.0	5
L1	FES	24	967.5	8
L9	FES	15	982.0	5
M1	FES	15	978.0	5
O1	FES	24	968.8	8
O3	FES	30	966.9	12
O7	FES	18	967.5	6
O12	FES	15	1009.1	5
P1	FES	15	973.0	5
Q1	FES	48	967.0	26

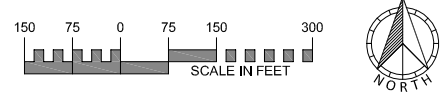
STRUCTURE TABLE							
STRUCTURE NAME	TYPE	DIAMETER	RIM	BUILD	INV	CASTING	NOTES
A1A	CBMH	48"	986.0	7.7'	978.3	R-4342	MNDOT CONCRETE FRAME PLATE #4143E
A2	CBMH	48"	991.8	8.6'	983.2	R-4342	MNDOT CONCRETE FRAME PLATE #4143E
A3	CBMH	48"	1002.2	21.1'	981.1	R-3067	
A4	STMH	48"	1004.6	18.8'	985.8	R-1642	
A5	CBMH	48"	1002.8	12.3'	990.5	R-3067	
A6	CBMH	48"	1002.8	12.2'	990.6	R-3067	
A13	CBMH	48"	996.8	7.7'	989.1	R-3067	
A14	CBMH	48"	994.2	4.3'	989.6	R-3067	
A15	CB	2'x3'	994.2	4.3'	989.9	R-3067	
A18	CBMH	48"	1004.2	4.6'	999.6	R-3067	
A19	CB	2'x3'	1004.2	4.3'	999.9	R-3067	
F2	STMH	48"	974.0	5.2'	968.8	R-1642	
F3	CBMH	48"	990.3	16.8'	973.5	R-3067	
F4	CBMH	48"	990.4	12.5'	977.9	R-3067	
F5	CBMH	48"	982.9	4.2'	978.7	R-4342	MNDOT CONCRETE FRAME PLATE #4143E
F6	CBMH	48"	985.0	4.3'	980.7	R-4342	MNDOT CONCRETE FRAME PLATE #4143E
G2	STMH	48"	973.9	6.4'	967.5	R-1642	
G3	CBMH	48"	986.7	9.9'	976.8	R-3067	
G4	CBMH	48"	988.0	4.6'	983.4	R-3067	
G5	CB	2'x3'	988.0	4.3'	983.7	R-3067	
G6	CB	2'x3'	985.8	4.4'	981.4	R-3067	
H2	STMH	72"	971.7	4.5'	967.2	R-1642	
H2A	CBMH	60"	979.2	15.5'	963.7	R-3067	
H3	CBMH	48"	978.2	10.3'	967.9	R-3067	
H4	STMH	48"	978.3	10.3'	968.0	R-1642	
H5	CBMH	48"	972.0	3.6'	968.5	R-4342	MNDOT CONCRETE FRAME PLATE #4143E
H6	CBMH	48"	974.0	4.5'	969.5	R-4342	MNDOT CONCRETE FRAME PLATE #4143E
H7	CB	27"	974.0	4.0'	970.0	R-4342	MNDOT CONCRETE FRAME PLATE #4143E
H8	CB	2'x3'	978.2	4.3'	973.9	R-3067	
H9	STMH	48"	977.4	4.9'	972.5	R-1642	
I2	CBMH	48"	974.4	4.5'	969.9	R-4342	MNDOT CONCRETE FRAME PLATE #4143E
I3	CBMH	48"	985.7	9.4'	976.3	R-3067	
I4	CBMH	48"	985.4	4.7'	980.7	R-3067	
I5	CBMH	48"	986.3	5.3'	981.0	R-3067	
I6	CBMH	48"	987.9	6.6'	981.3	R-3067	
I7	CBMH	48"	986.0	4.3'	981.7	R-4342	MNDOT CONCRETE FRAME PLATE #4143E
I8	CB	27"	987.0	4.3'	982.7	R-4342	MNDOT CONCRETE FRAME PLATE #4143E
I9	CBMH	48"	977.9	4.5'	973.4	R-4342	MNDOT CONCRETE FRAME PLATE #4143E
I10	CBMH	48"	988.5	8.6'	979.9	R-3067	
I11	CB	2'x3'	988.5	4.3'	984.2	R-3067	
J2	CBMH	48"	984.8	11.0'	973.8	R-4342	MNDOT CONCRETE FRAME PLATE #4143E
J3	CBMH	48"	990.9	4.2'	986.7	R-4342	MNDOT CONCRETE FRAME PLATE #4143E
J5	CBMH	48"	998.0	8.7'	989.3	R-3067	
J6	CBMH	48"	998.0	4.3'	993.7	R-3067	
J7	CBMH	48"	1003.0	5.5'	997.5	R-3067	



STRUCTURE TABLE							
STRUCTURE NAME	TYPE	DIAMETER	RIM	BUILD	INV	CASTING	NOTES
J8	CBMH	48"	1007.4	4.3'	1003.1	R-3067	
J9	CBMH	48"	1009.6	4.7'	1004.9	R-3067	
J10	CBMH	48"	1011.7	6.4'	1005.3	R-3067	
J11	CB	2'x3'	1011.7	4.3'	1007.4	R-3067	
K2	CBMH	48"	979.2	3.9'	975.3	R-4342	MNDOT CONCRETE FRAME PLATE #4143E
K3	CBMH	48"	985.4	9.3'	976.1	R-3067	
K4	CBMH	48"	985.1	4.5'	980.6	R-3067	
K5	CB	2'x3'	985.1	4.2'	980.9	R-3067	
K6	CBMH	48"	989.4	4.3'	985.1	R-3067	
K7	CB	2'x3'	990.1	4.3'	985.8	R-3067	
L1A	STMH	48"	971.6	3.9'	967.7	R-1642	
L2	CBMH	48"	977.5	10.2'	967.3	R-3067	
L3	CBMH	48"	977.5	6.0'	971.5	R-3067	
L4	CBMH	48"	978.1	6.4'	971.7	R-4342	MNDOT CONCRETE FRAME PLATE #4143E
L5	CBMH	48"	977.4	4.6'	972.8	R-4342	MNDOT CONCRETE FRAME PLATE #4143E
L6	CBMH	48"	978.0	4.5'	973.5	R-4342	MNDOT CONCRETE FRAME PLATE #4143E
L7	CBMH	48"	978.9	3.9'	975.0	R-4342	MNDOT CONCRETE FRAME PLATE #4143E
L8	CBMH	48"	980.0	3.8'	976.3	R-4342	MNDOT CONCRETE FRAME PLATE #4143E
L10	CB	2'x3'	977.5	4.3'	973.2	R-3067	
L11	CB	2'x3'	977.5	4.3'	973.2	R-3067	
M2	CBMH	48"	982.1	4.0'	978.1	R-3067	
M3	CBMH	48"	991.3	8.6'	982.7	R-3067	
M4	CB	2'x3'	991.3	4.3'	987.0	R-3067	
O8	CBMH	48"	975.4	5.4'	970.0	R-4342	MNDOT CONCRETE FRAME PLATE #4143E
O9	CBMH	48"	978.0	6.0'	972.0	R-4342	MNDOT CONCRETE FRAME PLATE #4143E
O10	CBMH	48"	978.3	4.3'	974.0	R-4342	MNDOT CONCRETE FRAME PLATE #4143E
P2	CBMH	48"	984.3	12.6'	971.7	R-3067	
P3	CB	2'x3'	984.3	4.3'	980.0	R-3067	
Q2	CBMH	72"	979.5	16.3'	963.2	R-3067	
Q3	CBMH	48"	981.3	4.4'	976.9	R-3067	
Q4	CBMH	48"	985.9	4.7'	981.2	R-3067	
Q5	CBMH	48"	986.1	4.6'	981.5	R-3067	
Q6	CB	2'x3'	986.1	4.3'	981.8	R-3067	
Q7	CBMH	72"	979.5	12.2'	967.3	R-3067	

- STORM NETWORK NOTES:**
- 6" RIGID PVC DRAINTILE SHALL BE INSTALLED AT THE LOWPOINT CATCH BASINS 125' MIN. (STD) IN EACH DIRECTION & 250' IN THE UPHILL DIRECTION FOR ON SLOPE CATCH BASINS.
 - 6" PERFORATED REAR YARD DRAINTILE WWRAP SHALL BE INSTALLED THROUGH THE INFILTRATION/FILTRATION AREAS AS SHOWN ON THE PLANS. SEE THE "TYPICAL DETAIL - INFILTRATION/FILTRATION AREA" BELOW FOR INSTALLATION PURPOSES.
 - 6" PERFORATED REAR YARD DRAINTILE NOT WITH THE INFILTRATION/FILTRATION AREAS SHALL COMPLY TO CITY DETAIL ST-10.
 - TIE THE LAST 6 PIPE JOINTS TO FLARED END SECTIONS (TYPICAL).
 - TRASH GUARDS SHALL BE PLACED ON ALL FLARED END SECTIONS 24" OR LARGER. THERE ARE NO TRASH GUARDS ON 12" THROUGH 21" F.E.S.'S.
 - TIE ALL PIPE JOINTS BETWEEN STORM SEWER CONTROL STRUCTURES AND APRONS AND CULVERT APRONS.
 - TIE ALL JOINTS BETWEEN OCS STRUCTURES AND FLARED END SECTIONS.
 - WIMCO'S OR APPROVED EQUAL TO BE INSTALLED AT ALL STORM INLETS.
 - GRANULAR MATERIAL SHALL BE PLACED UNDER STORM SEWER PIPE OR STRUCTURES THAT ARE LESS THAN 48" BELOW FINISHED GRADE AND EXTEND TO AT LEAST 48" BELOW FINISHED GRADE.
 - RIP-RAP FOR STORM SEWER SHALL BE CONSTRUCTED USING GRANITE ROCK, 1" DIAMETER OR LARGER AND SHALL BE HAND PLACED. RIP-RAP SHALL BE CLASS 3 ON FILTER MATERIAL ON GEOTEXTILE FABRIC.
 - ALL ADJUSTING RINGS TO BE HDPE.
 - ALL EXISTING STORM SEWER PIPES NOT BEING REMOVED MUST FUNCTION AFTER ROADWORK HAS BEEN COMPLETED.

OUTLET STRUCTURE TABLE			
Structure Name	TYPE	INV	DETAIL
H10	OCS	970.00 973.00	SEE STRUCTURE DETAIL
O2	OCS	967.00 969.00	SEE STRUCTURE DETAIL
O4	OCS	967.00 967.00	SEE STRUCTURE DETAIL
O6	OCS	964.00 967.50	SEE STRUCTURE DETAIL
O11	OCS	975.50 978.00	SEE STRUCTURE DETAIL
O13	OCS	1007.00 1009.50	SEE STRUCTURE DETAIL

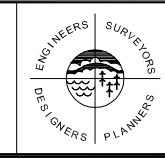


DRAWING NAME	NO.	BY	DATE	REVISIONS
HD - SW				
DRAWN BY				
ERJ				
CHECKED BY				
RSM				
DATE				
06/30/21				

USE (INCLUDING COPYING, DISTRIBUTION, AND/OR CONVEYANCE OF INFORMATION) OF THIS PRODUCT IS STRICTLY PROHIBITED WITHOUT SATHRE-BERGQUIST, INC.'S EXPRESS WRITTEN AUTHORIZATION. USE WITHOUT SAID AUTHORIZATION CONSTITUTES AN ILLEGITIMATE USE AND SHALL THEREBY INDEMNIFY SATHRE-BERGQUIST, INC. OF ALL RESPONSIBILITY. SATHRE-BERGQUIST, INC. RESERVES THE RIGHT TO HOLD ANY ILLEGITIMATE USER OR PARTY LEGALLY RESPONSIBLE FOR DAMAGES OR LOSSES RESULTING FROM ILLEGITIMATE USE.

I HEREBY CERTIFY THAT THIS PLAN OR SPECIFICATION WAS PREPARED BY ME OR UNDER MY DIRECT SUPERVISION AND THAT I AM A DUD REGISTERED PROFESSIONAL ENGINEER UNDER THE LAWS OF THE STATE OF MINNESOTA.

Robert S. Molstad
ROBERT S. MOLSTAD, P.E.
Date: 06/30/21 Lic. No. 26428



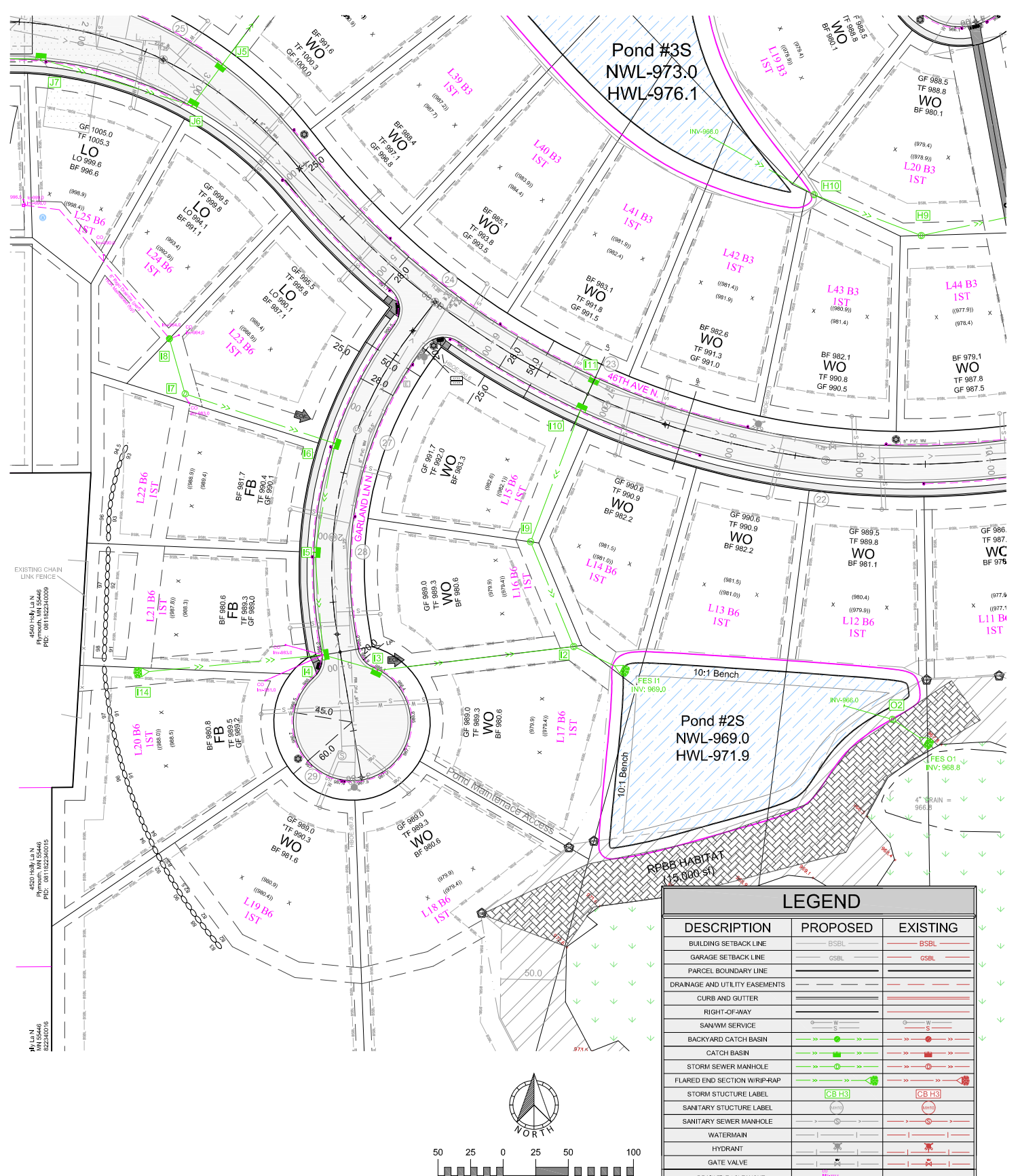
SATHRE-BERGQUIST, INC.
150 SOUTH BROADWAY WAYZATA, MN. 55391 (952) 476-6000

CITY PROJECT NO. ---
PLYMOUTH, MINNESOTA

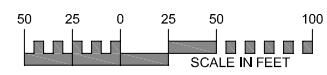
FINAL STORM SEWER PLAN
HOLLYDALE
HOLLYDALE GC DEVELOPMENT, INC

FILE NO. 3120-077
23
48

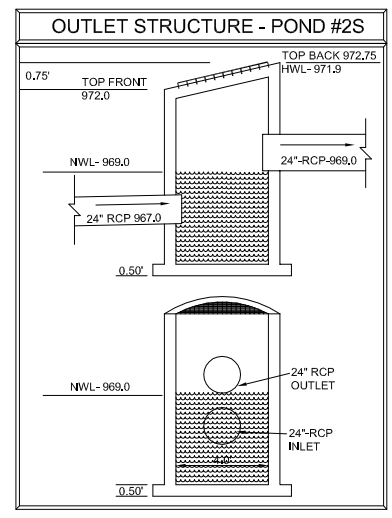
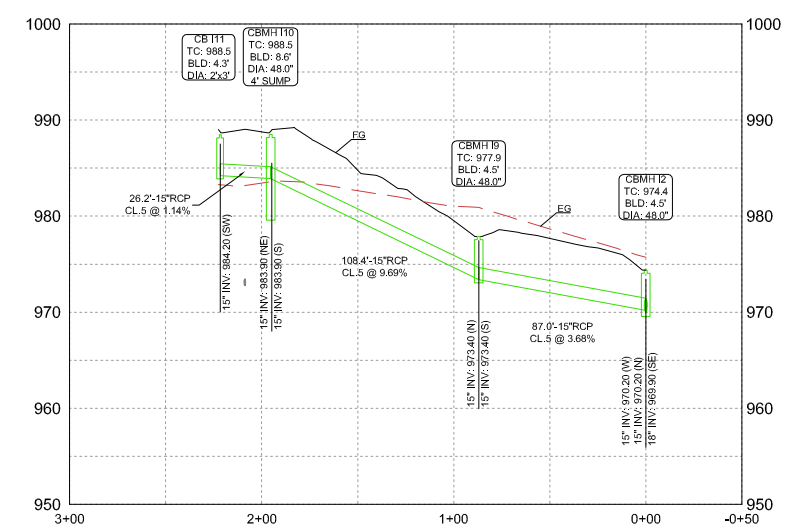
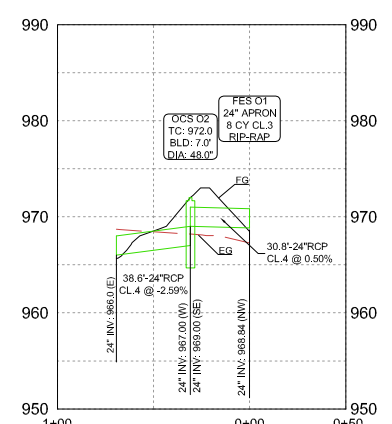
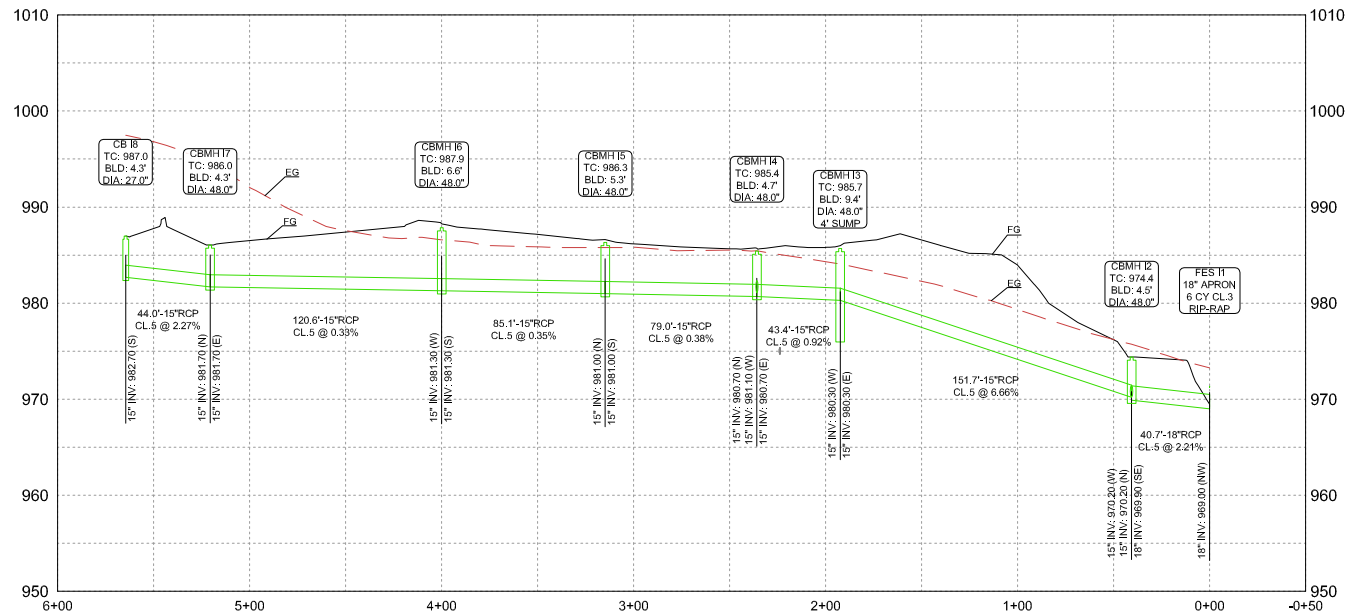
PROJECT NAME AND NUMBER



LEGEND		
DESCRIPTION	PROPOSED	EXISTING
BUILDING SETBACK LINE	BSBL	BSBL
GARAGE SETBACK LINE	GSBL	GSBL
PARCEL BOUNDARY LINE		
DRAINAGE AND UTILITY EASEMENTS		
CURB AND GUTTER		
RIGHT-OF-WAY		
SAN/WM SERVICE		
BACKYARD CATCH BASIN		
CATCH BASIN		
STORM SEWER MANHOLE		
FLARED END SECTION WRIP-RAP		
STORM STRUCTURE LABEL	(CBH3)	(CBH3)
SANITARY STRUCTURE LABEL		
SANITARY SEWER MANHOLE		
WATERMAIN		
HYDRANT		
GATE VALVE		
DRAIN TILE / CLEANOUT		
PLASTIC CATCH-BASIN		



EXISTING UTILITIES SHOWN ARE SHOWN IN AN APPROXIMATE WAY ONLY. THE CONTRACTOR SHALL DETERMINE THE EXACT LOCATION OF ANY AND ALL EXISTING UTILITIES BEFORE COMMENCING WORK. HE AGREES TO BE FULLY RESPONSIBLE FOR ANY AND ALL DAMAGES ARISING OUT OF HIS FAILURE TO EXACTLY LOCATE AND PRESERVE ANY AND ALL EXISTING UTILITIES.



DRAWING NAME	NO.	BY	DATE	REVISIONS
HD - SW				
DRAWN BY				
CHECKED BY				
DATE				
06/30/21				

USE (INCLUDING COPYING, DISTRIBUTION, AND/OR CONVEYANCE OF INFORMATION) OF THIS PRODUCT IS STRICTLY PROHIBITED WITHOUT SATHRE-BERGQUIST, INC.'S EXPRESS WRITTEN AUTHORIZATION. USE WITHOUT SAID AUTHORIZATION CONSTITUTES AN ILLEGITIMATE USE AND SHALL THEREBY INDEMNIFY SATHRE-BERGQUIST, INC. OF ALL RESPONSIBILITY. SATHRE-BERGQUIST, INC. RESERVES THE RIGHT TO HOLD ANY ILLEGITIMATE USER OR PARTY LEGALLY RESPONSIBLE FOR DAMAGES OR LOSSES RESULTING FROM ILLEGITIMATE USE.

I HEREBY CERTIFY THAT THIS PLAN OR SPECIFICATION WAS PREPARED BY ME OR UNDER MY DIRECT SUPERVISION AND THAT I AM A DULY REGISTERED PROFESSIONAL ENGINEER UNDER THE LAWS OF THE STATE OF MINNESOTA.

Robert S. Molstad
 ROBERT S. MOLSTAD, P.E.
 Date: 06/30/21 Lic. No. 26428

SATHRE-BERGQUIST, INC.
 150 SOUTH BROADWAY WAYZATA, MN. 55391 (952) 476-6000

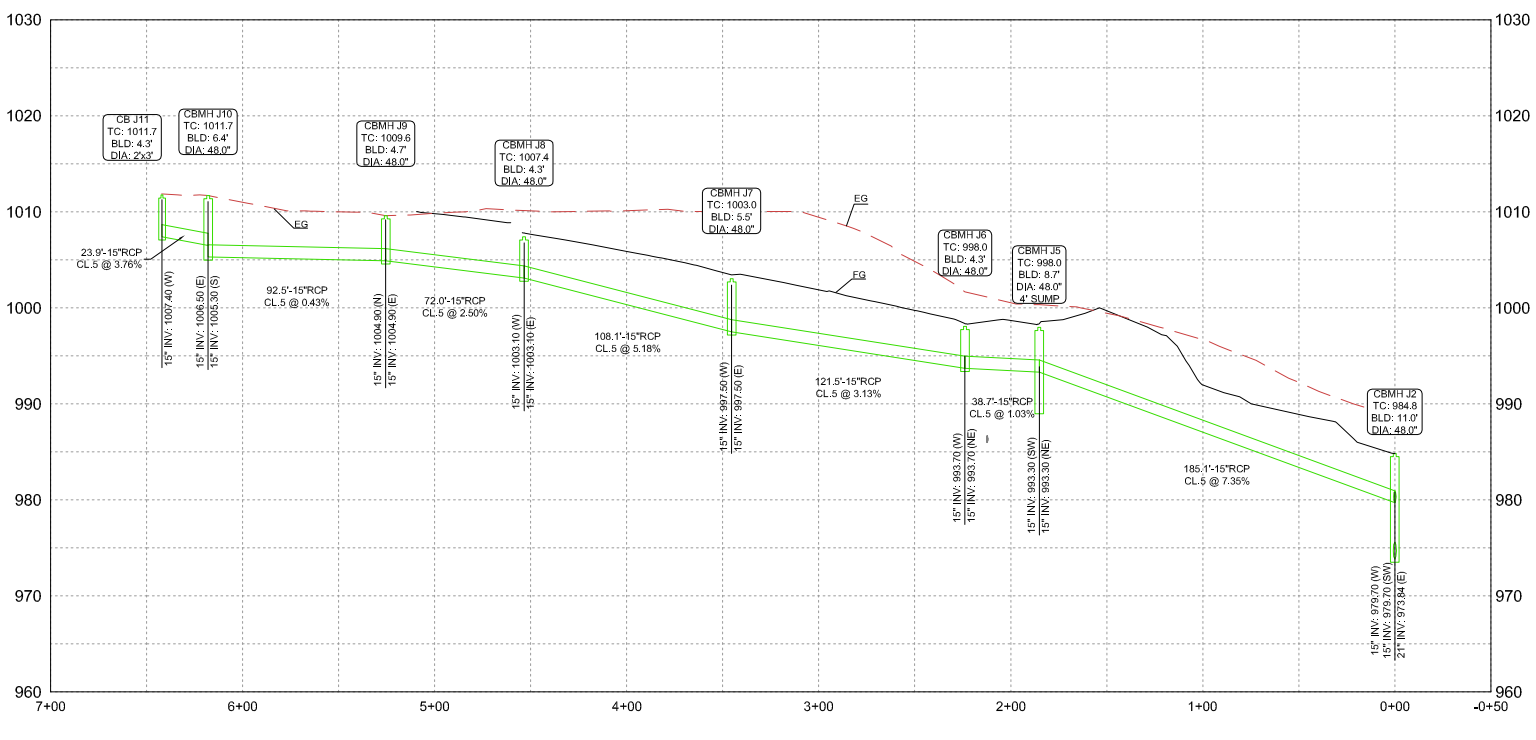
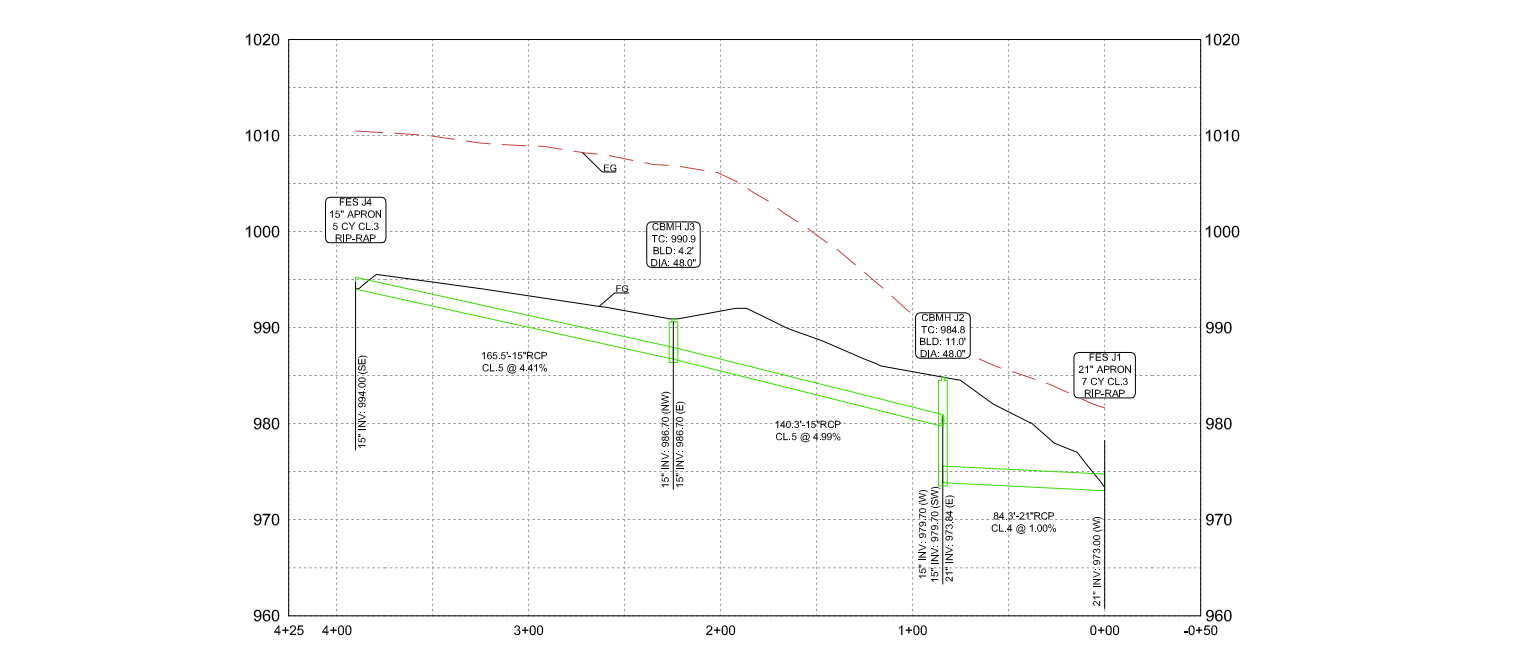
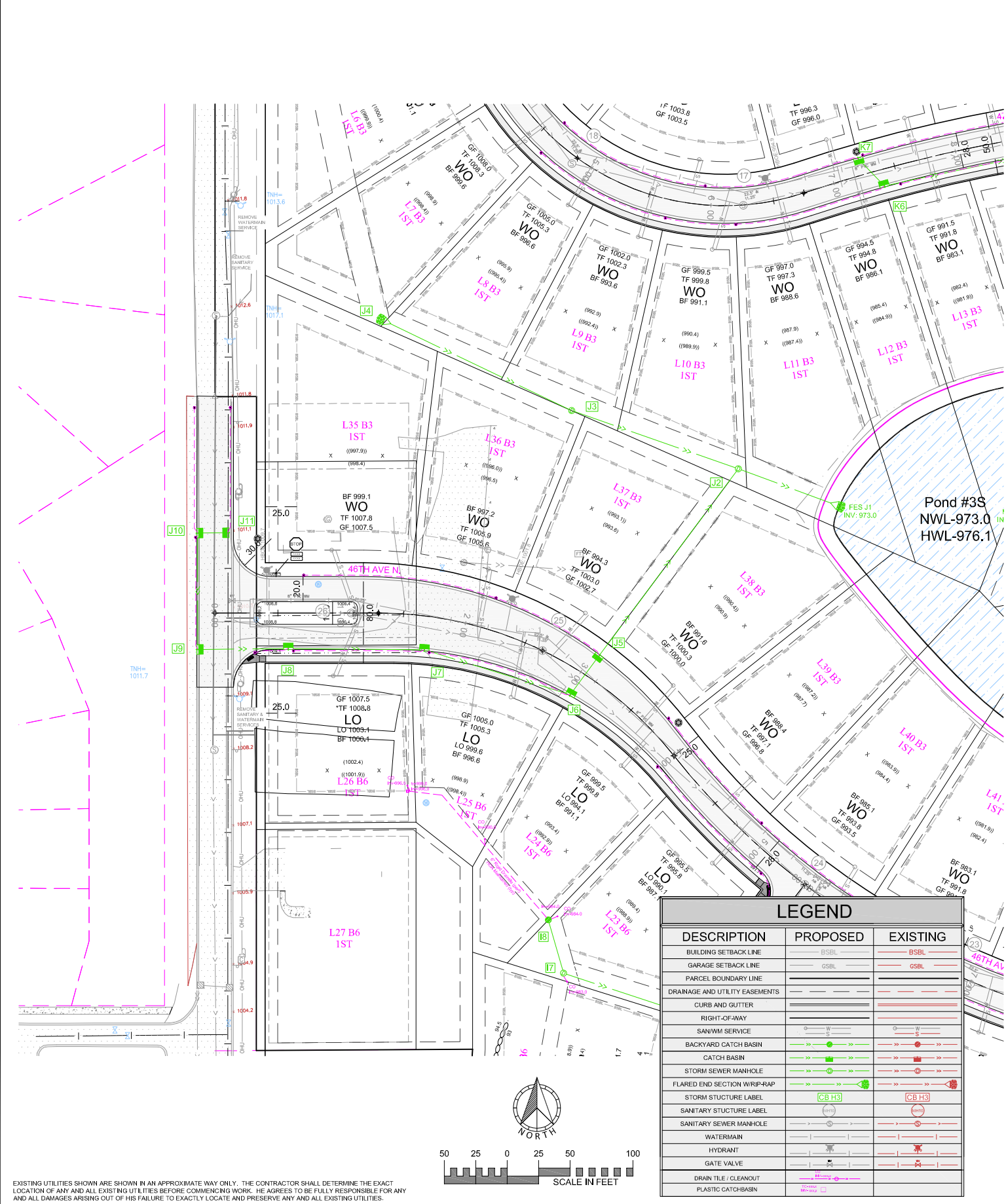
CITY PROJECT NO. ---

PLYMOUTH, MINNESOTA

FINAL STORM SEWER PLAN

HOLLYDALE

HOLLYDALE GC DEVELOPMENT, INC



DRAWING NAME	NO.	BY	DATE	REVISIONS
HD - SW				
DRAWN BY				
CHECKED BY				
DATE				
06/30/21				

USE (INCLUDING COPYING, DISTRIBUTION, AND/OR CONVEYANCE OF INFORMATION) OF THIS PRODUCT IS STRICTLY PROHIBITED WITHOUT SATHRE-BERGQUIST, INC.'S EXPRESS WRITTEN AUTHORIZATION. USE WITHOUT SAID AUTHORIZATION CONSTITUTES AN ILLEGITIMATE USE AND SHALL THEREBY INDEMNIFY SATHRE-BERGQUIST, INC. OF ALL RESPONSIBILITY. SATHRE-BERGQUIST, INC. RESERVES THE RIGHT TO HOLD ANY ILLEGITIMATE USER OR PARTY LEGALLY RESPONSIBLE FOR DAMAGES OR LOSSES RESULTING FROM ILLEGITIMATE USE.

I HEREBY CERTIFY THAT THIS PLAN OR SPECIFICATION WAS PREPARED BY ME OR UNDER MY DIRECT SUPERVISION AND THAT I AM A DULY REGISTERED PROFESSIONAL ENGINEER UNDER THE LAWS OF THE STATE OF MINNESOTA.

Robert S. Molstad
 ROBERT S. MOLSTAD, P.E.
 Date: 06/30/21 Lic. No. 26428

SATHRE-BERGQUIST, INC.
 150 SOUTH BROADWAY WAYZATA, MN. 55391 (952) 476-6000

ENGINEERS SURVEYORS
 DESIGNERS PLANNERS

CITY PROJECT NO. ---

PLYMOUTH, MINNESOTA

FINAL STORM SEWER PLAN

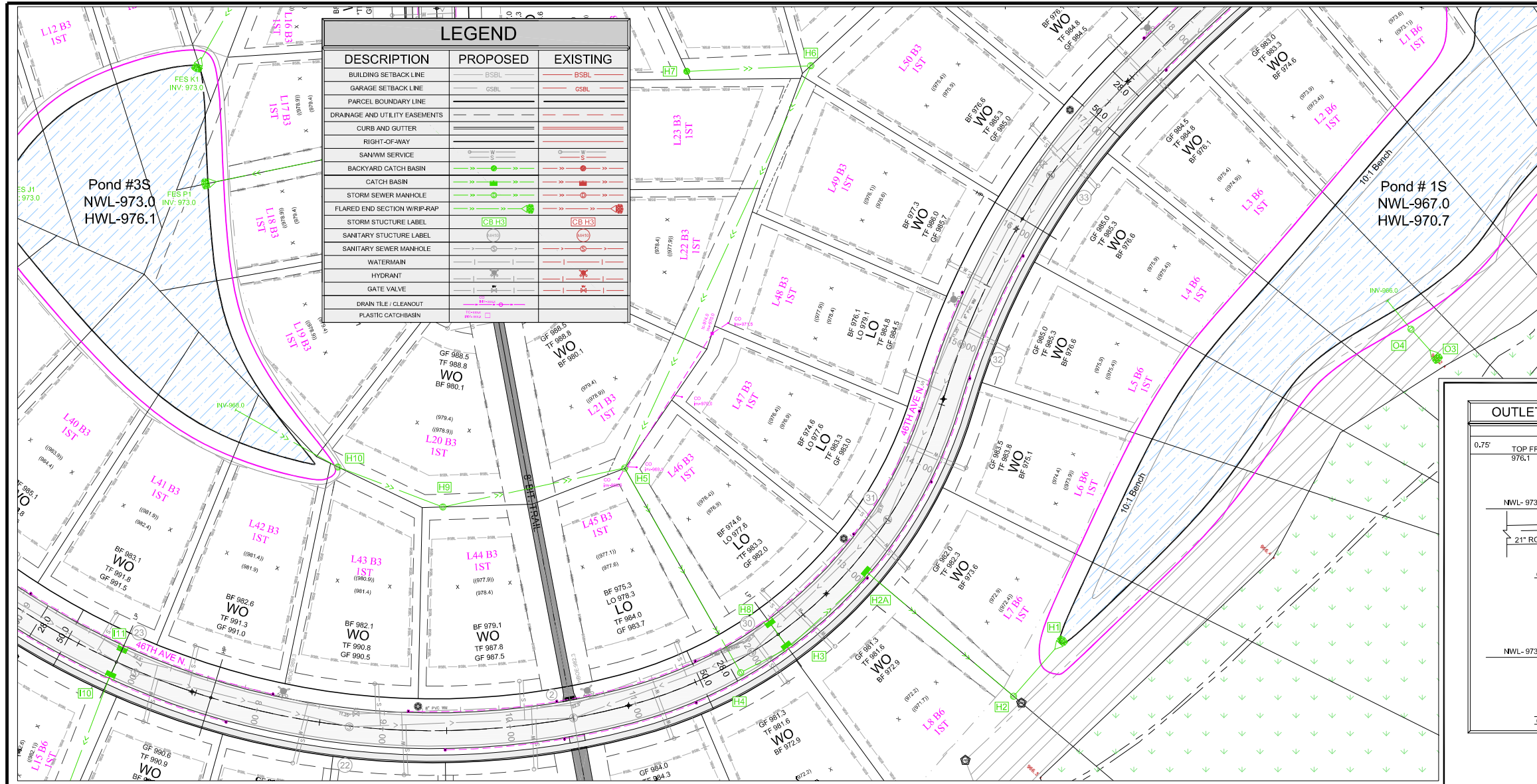
HOLLYDALE

HOLLYDALE GC DEVELOPMENT, INC

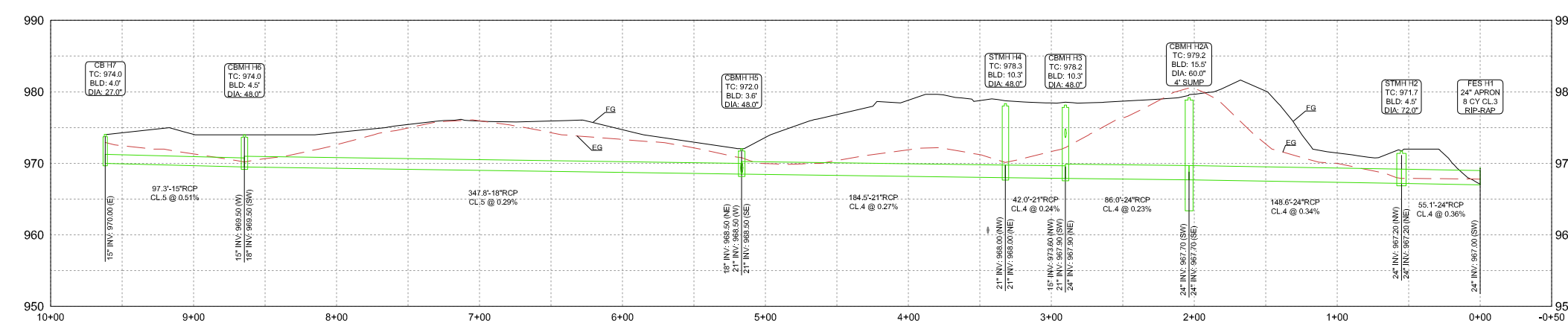
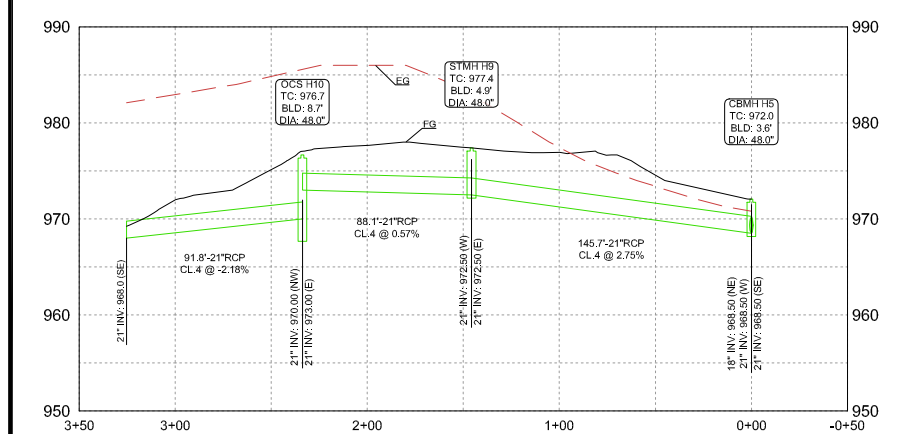
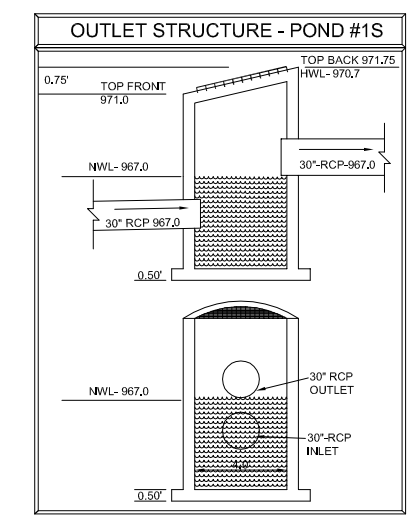
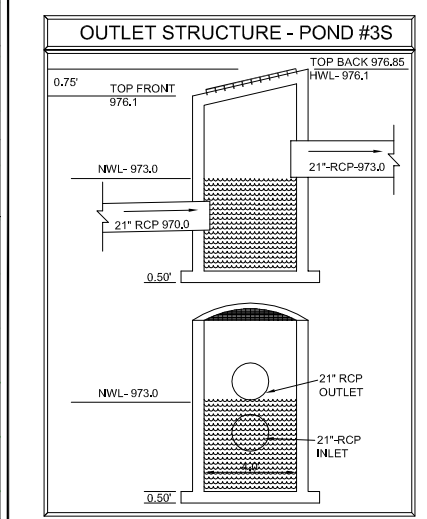
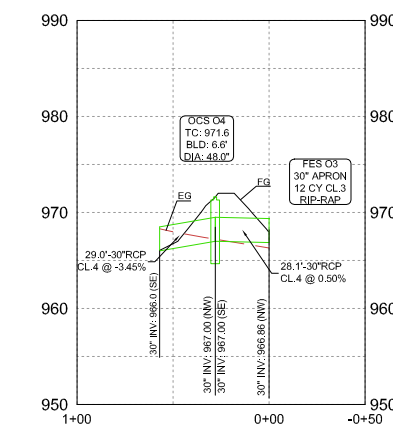
FILE NO. 3120-077

25

48



DESCRIPTION	PROPOSED	EXISTING
BUILDING SETBACK LINE	BSBL	BSBL
GARAGE SETBACK LINE	GSBL	GSBL
PARCEL BOUNDARY LINE		
DRAINAGE AND UTILITY EASEMENTS		
CURB AND GUTTER		
RIGHT-OF-WAY		
SANWV SERVICE		
BACKYARD CATCH BASIN		
CATCH BASIN		
STORM SEWER MANHOLE		
FLARED END SECTION WRIP-RAP		
STORM STRUCTURE LABEL	CB H3	CB H3
SANITARY STRUCTURE LABEL		
SANITARY SEWER MANHOLE		
WATERMAIN		
HYDRANT		
GATE VALVE		
DRAIN TILE / CLEANOUT		
PLASTIC CATCH BASIN		



DRAWING NAME	NO.	BY	DATE	REVISIONS
HD - SW				
DRAWN BY				
CHECKED BY				
DATE				
06/30/21				

USE (INCLUDING COPYING, DISTRIBUTION, AND/OR CONVEYANCE OF INFORMATION) OF THIS PRODUCT IS STRICTLY PROHIBITED WITHOUT SATHRE-BERGQUIST, INC.'S EXPRESS WRITTEN AUTHORIZATION. USE WITHOUT SAID AUTHORIZATION CONSTITUTES AN ILLEGITIMATE USE AND SHALL THEREBY INDEMNIFY SATHRE-BERGQUIST, INC. OF ALL RESPONSIBILITY. SATHRE-BERGQUIST, INC. RESERVES THE RIGHT TO HOLD ANY ILLEGITIMATE USER OR PARTY LEGALLY RESPONSIBLE FOR DAMAGES OR LOSSES RESULTING FROM ILLEGITIMATE USE.

I HEREBY CERTIFY THAT THIS PLAN OR SPECIFICATION WAS PREPARED BY ME OR UNDER MY DIRECT SUPERVISION AND THAT I AM A DULY REGISTERED PROFESSIONAL ENGINEER UNDER THE LAWS OF THE STATE OF MINNESOTA.

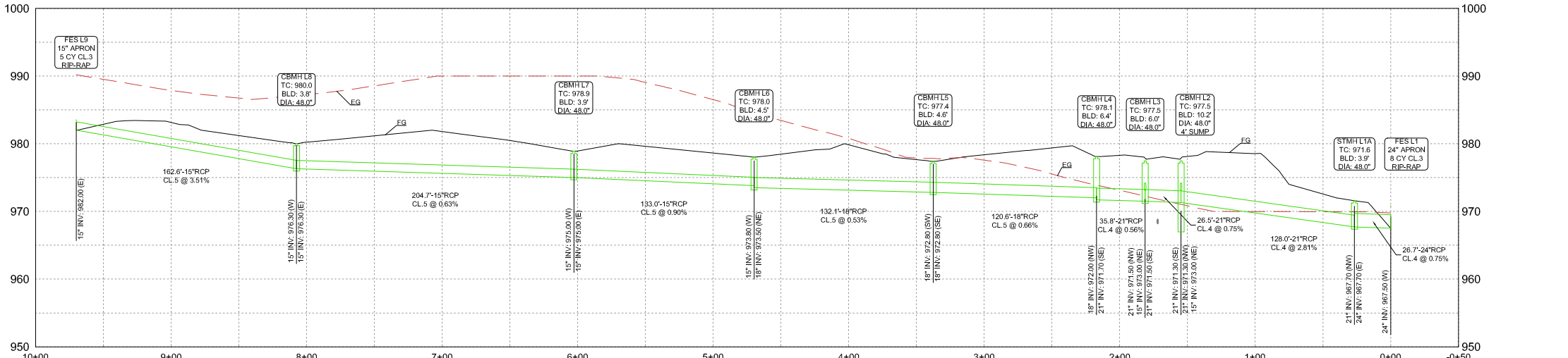
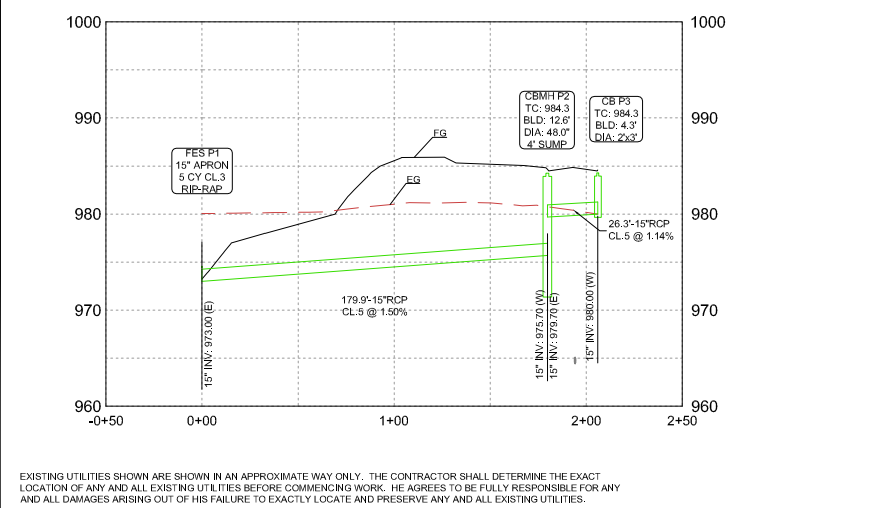
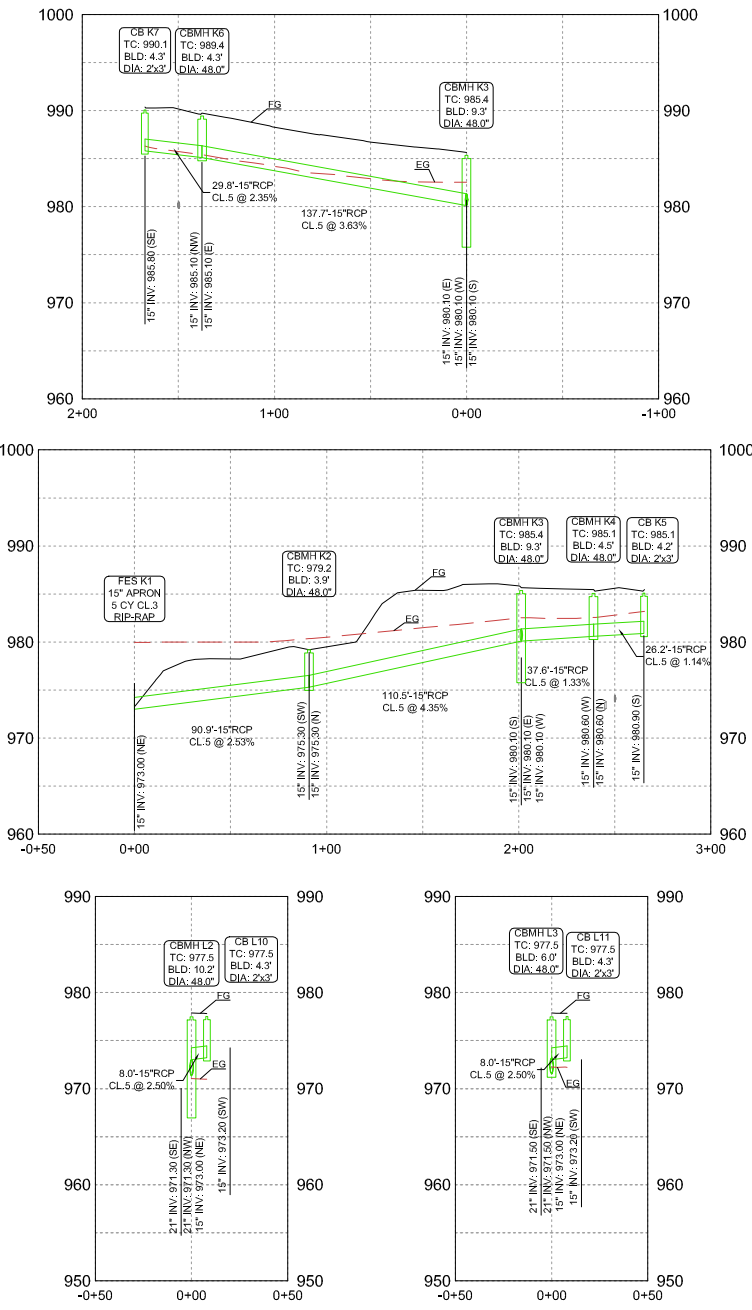
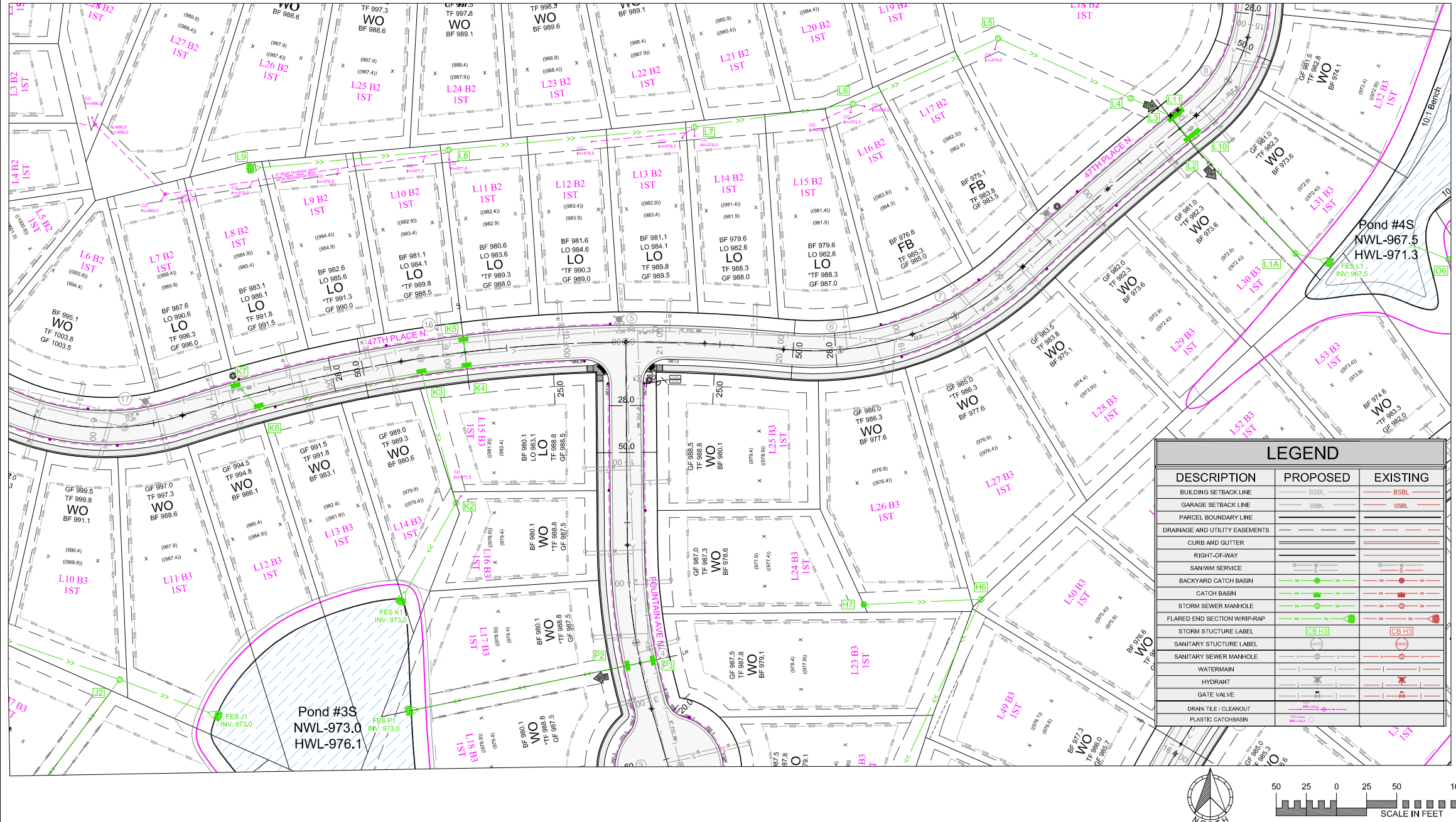
Robert S. Molstad
 ROBERT S. MOLSTAD, P.E.
 Date: 06/30/21 Lic. No. 26428

SATHRE-BERGQUIST, INC.
 150 SOUTH BROADWAY WAYZATA, MN. 55391 (952) 476-6000

CITY PROJECT NO. ---
PLYMOUTH, MINNESOTA

FINAL STORM SEWER PLAN
HOLLYDALE
HOLLYDALE GC DEVELOPMENT, INC

FILE NO. 3120-077
26
48



DRAWING NAME	NO.	BY	DATE	REVISIONS
HD - SW				
DRAWN BY				
CHECKED BY				
DATE				
06/30/21				

USE (INCLUDING COPYING, DISTRIBUTION, AND/OR CONVEYANCE OF INFORMATION) OF THIS PRODUCT IS STRICTLY PROHIBITED WITHOUT SATHRE-BERGQUIST, INC.'S EXPRESS WRITTEN AUTHORIZATION. USE WITHOUT SAID AUTHORIZATION CONSTITUTES AN ILLEGITIMATE USE AND SHALL THEREBY INDEMNIFY SATHRE-BERGQUIST, INC. OF ALL RESPONSIBILITY. SATHRE-BERGQUIST, INC. RESERVES THE RIGHT TO HOLD ANY ILLEGITIMATE USER OR PARTY LEGALLY RESPONSIBLE FOR DAMAGES OR LOSSES RESULTING FROM ILLEGITIMATE USE.

I HEREBY CERTIFY THAT THIS PLAN OR SPECIFICATION WAS PREPARED BY ME OR UNDER MY DIRECT SUPERVISION AND THAT I AM A DULY REGISTERED PROFESSIONAL ENGINEER UNDER THE LAWS OF THE STATE OF MINNESOTA.

Robert S. Molstad
 ROBERT S. MOLSTAD, P.E.
 Date: 06/30/21 Lic. No. 26428

SATHRE-BERGQUIST, INC.
 150 SOUTH BROADWAY WAYZATA, MN. 55391 (952) 476-6000

ENGINEERS SURVEYORS
 DESIGNERS PLANNERS

CITY PROJECT NO. ---

FINAL STORM SEWER PLAN

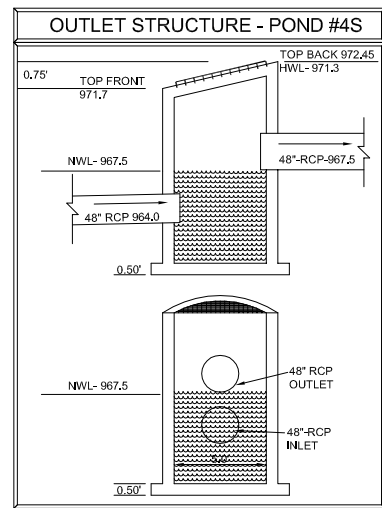
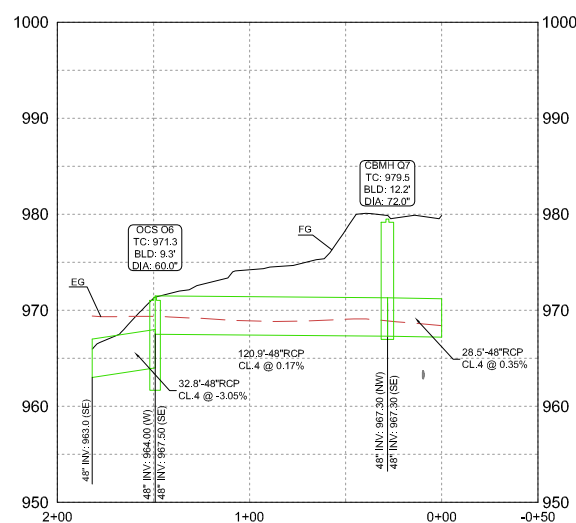
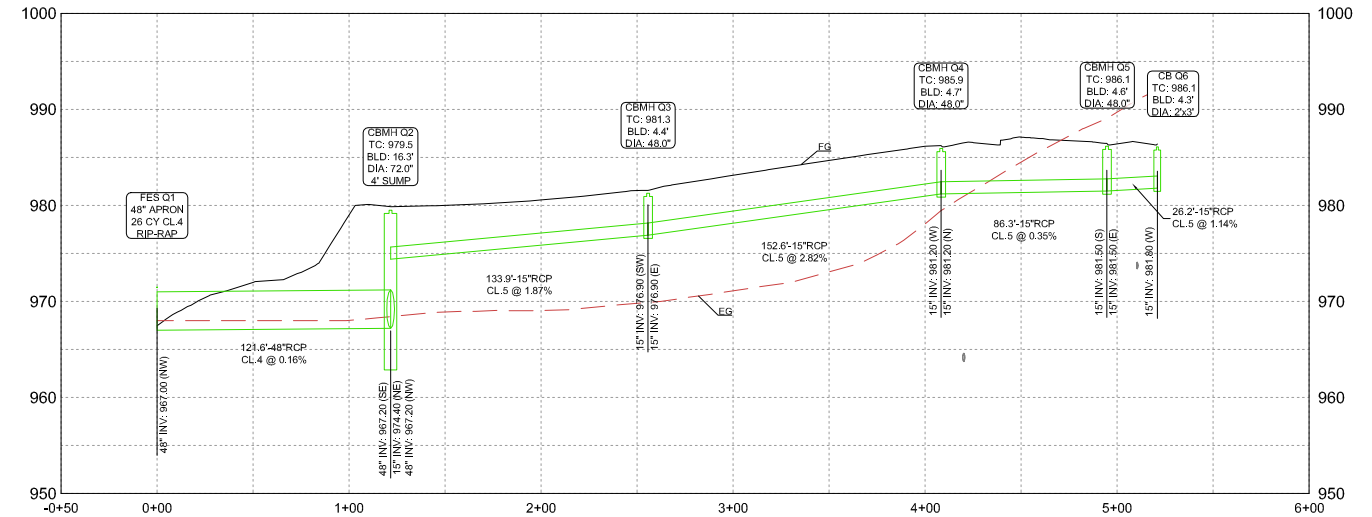
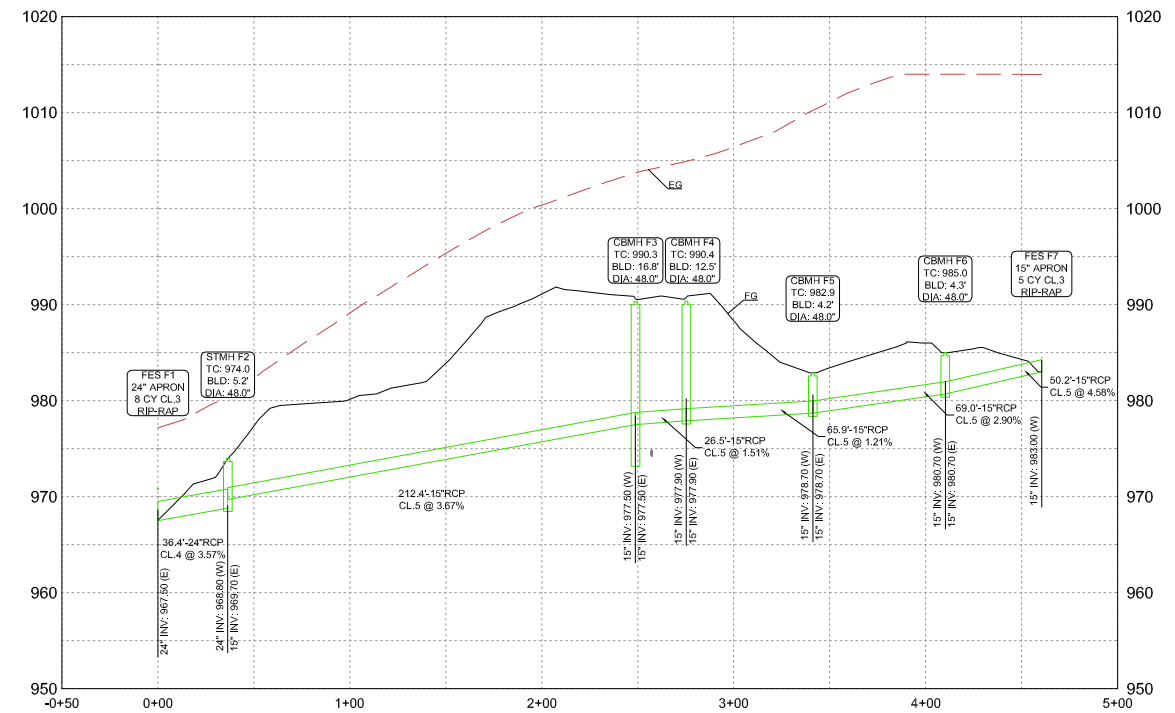
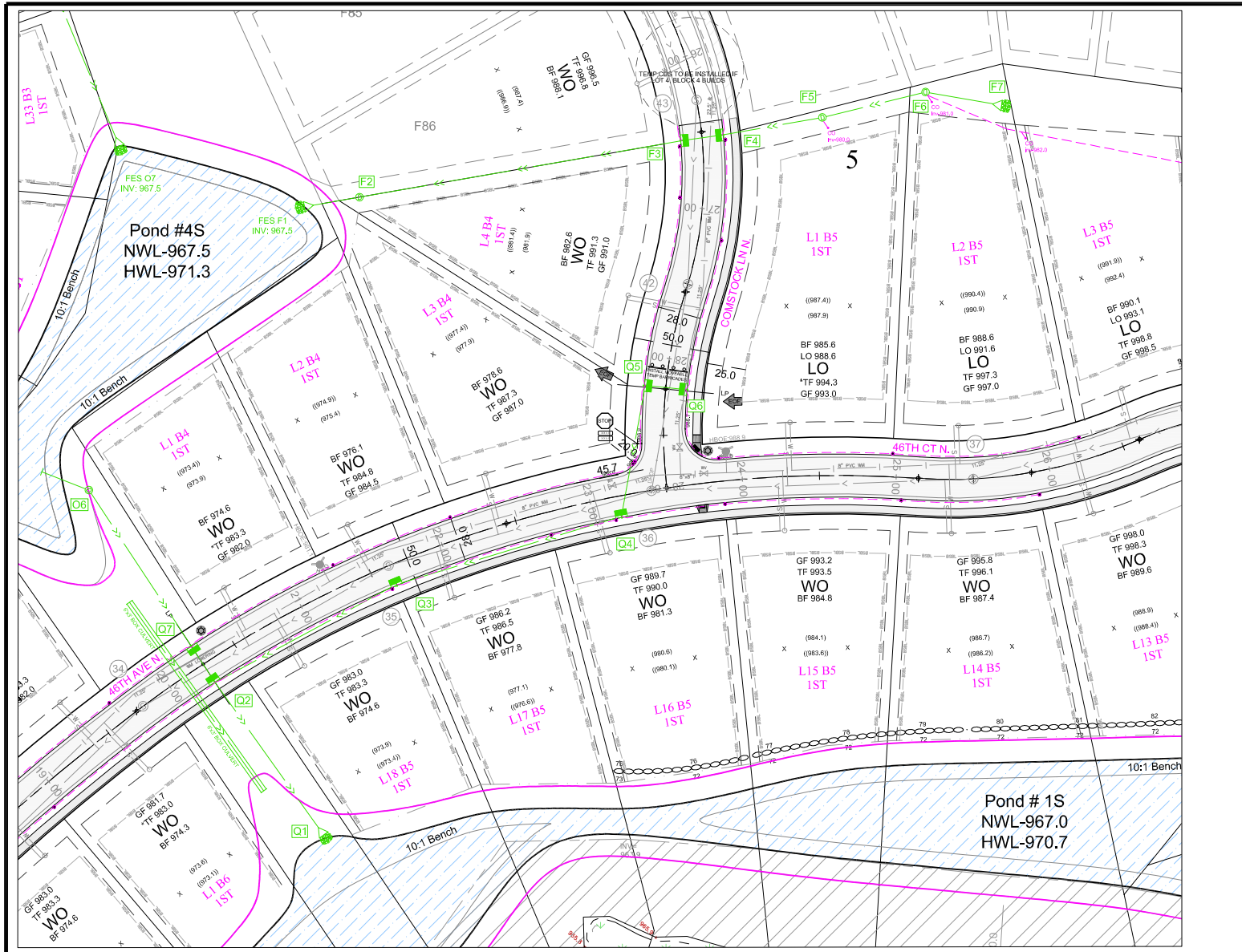
HOLLYDALE

HOLLYDALE GC DEVELOPMENT, INC

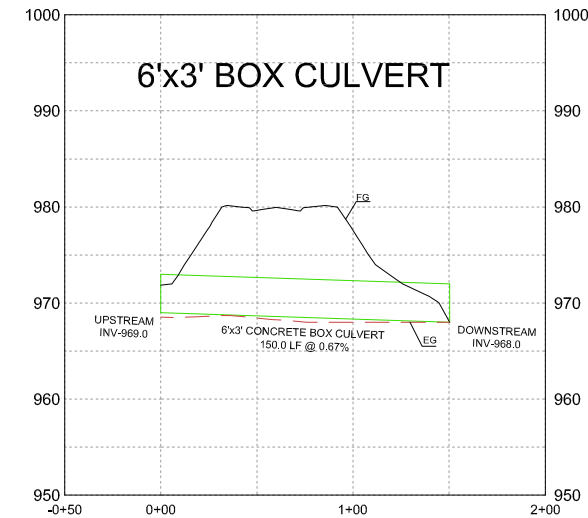
FILE NO. 3120-077

27

48



LEGEND		
DESCRIPTION	PROPOSED	EXISTING
BUILDING SETBACK LINE	B5BL	B5BL
GARAGE SETBACK LINE	G5BL	G5BL
PARCEL BOUNDARY LINE	P5BL	P5BL
DRAINAGE AND UTILITY EASEMENTS		
CURB AND GUTTER		
RIGHT-OF-WAY		
SAN/WM SERVICE		
BACKYARD CATCH BASIN		
CATCH BASIN		
STORM SEWER MANHOLE		
FLARED END SECTION WRIP-RAP		
STORM STRUCTURE LABEL	CB H3	CB H3
SANITARY STRUCTURE LABEL		
SANITARY SEWER MANHOLE		
WATERMAIN		
HYDRANT		
GATE VALVE		
DRAIN TILE / CLEANOUT		
PLASTIC CATCH BASIN		



EXISTING UTILITIES SHOWN ARE SHOWN IN AN APPROXIMATE WAY ONLY. THE CONTRACTOR SHALL DETERMINE THE EXACT LOCATION OF ANY AND ALL EXISTING UTILITIES BEFORE COMMENCING WORK. HE AGREES TO BE FULLY RESPONSIBLE FOR ANY AND ALL DAMAGES ARISING OUT OF HIS FAILURE TO EXACTLY LOCATE AND PRESERVE ANY AND ALL EXISTING UTILITIES.

DRAWING NAME	NO.	BY	DATE	REVISIONS
HD - SW				
DRAWN BY				
CHECKED BY				
DATE				
06/30/21				

USE (INCLUDING COPYING, DISTRIBUTION, AND/OR CONVEYANCE OF INFORMATION) OF THIS PRODUCT IS STRICTLY PROHIBITED WITHOUT SATHRE-BERGQUIST, INC.'S EXPRESS WRITTEN AUTHORIZATION. USE WITHOUT SAID AUTHORIZATION CONSTITUTES AN ILLEGITIMATE USE AND SHALL THEREBY INDEMNIFY SATHRE-BERGQUIST, INC. OF ALL RESPONSIBILITY. SATHRE-BERGQUIST, INC. RESERVES THE RIGHT TO HOLD ANY ILLEGITIMATE USER OR PARTY LEGALLY RESPONSIBLE FOR DAMAGES OR LOSSES RESULTING FROM ILLEGITIMATE USE.

I HEREBY CERTIFY THAT THIS PLAN OR SPECIFICATION WAS PREPARED BY ME OR UNDER MY DIRECT SUPERVISION AND THAT I AM A DULY REGISTERED PROFESSIONAL ENGINEER UNDER THE LAWS OF THE STATE OF MINNESOTA.

Robert S. Molstad
 ROBERT S. MOLSTAD, P.E.
 Date: 06/30/21 Lic. No. 26428

ENGINEERS SURVEYORS
DESIGNERS PLANNERS

SATHRE-BERGQUIST, INC.
 150 SOUTH BROADWAY WAYZATA, MN. 55391 (952) 476-6000

CITY PROJECT NO.
 --

PLYMOUTH, MINNESOTA

FINAL STORM SEWER PLAN

HOLLYDALE

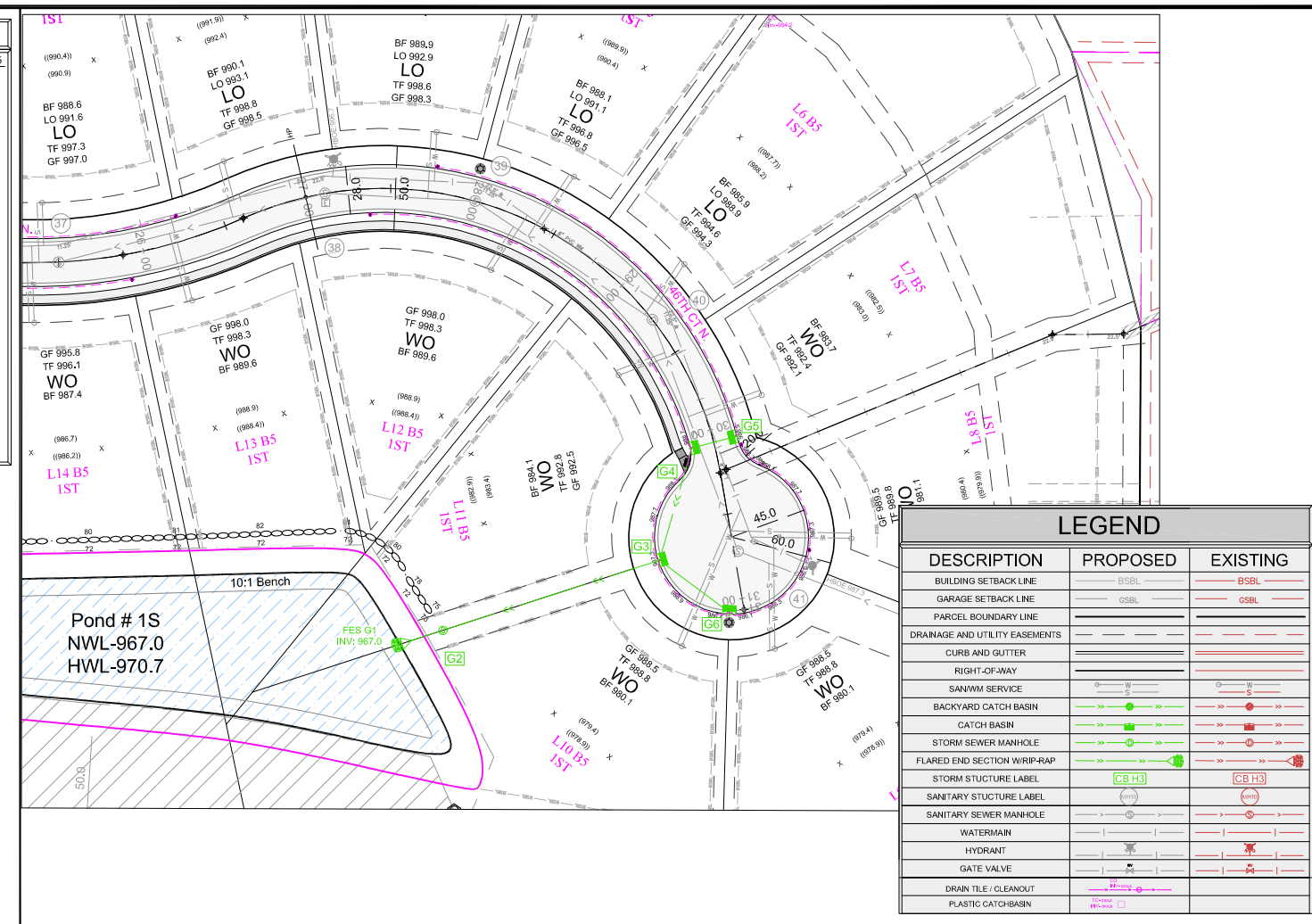
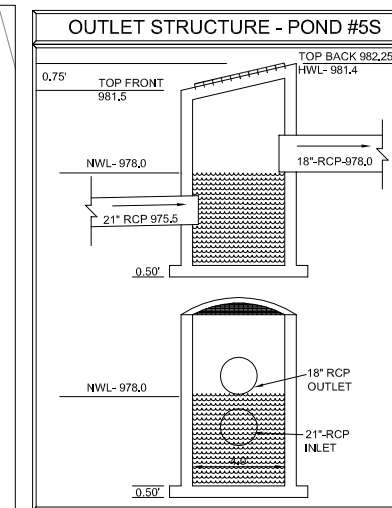
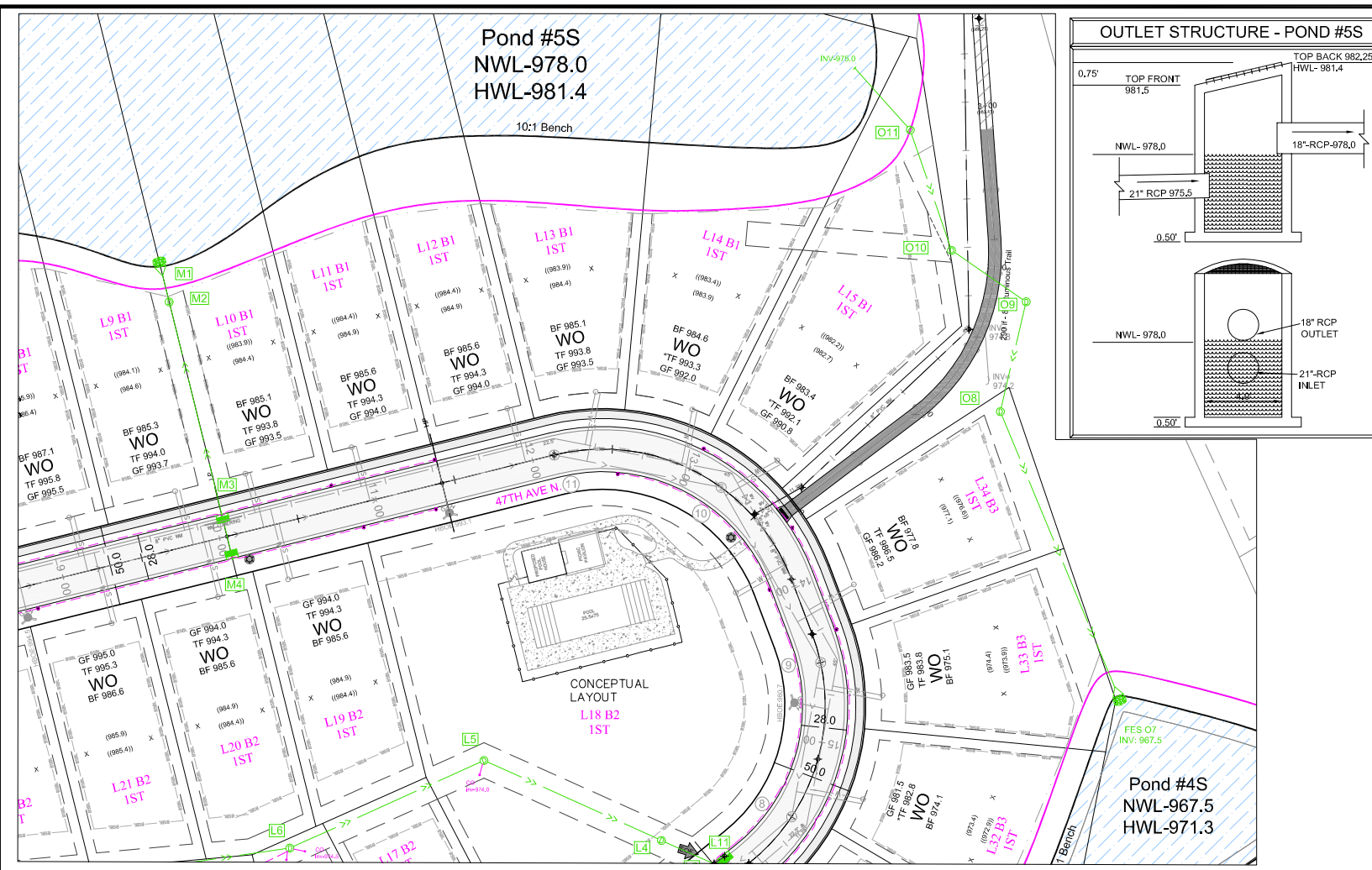
HOLLYDALE GC DEVELOPMENT, INC

FILE NO.
 3120-077

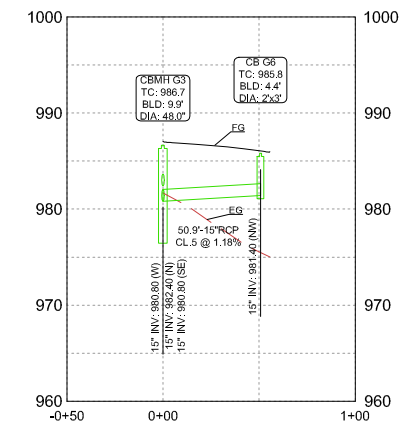
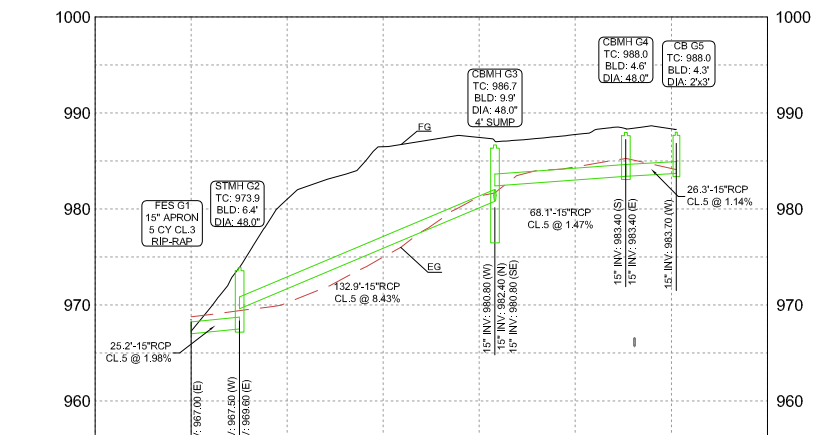
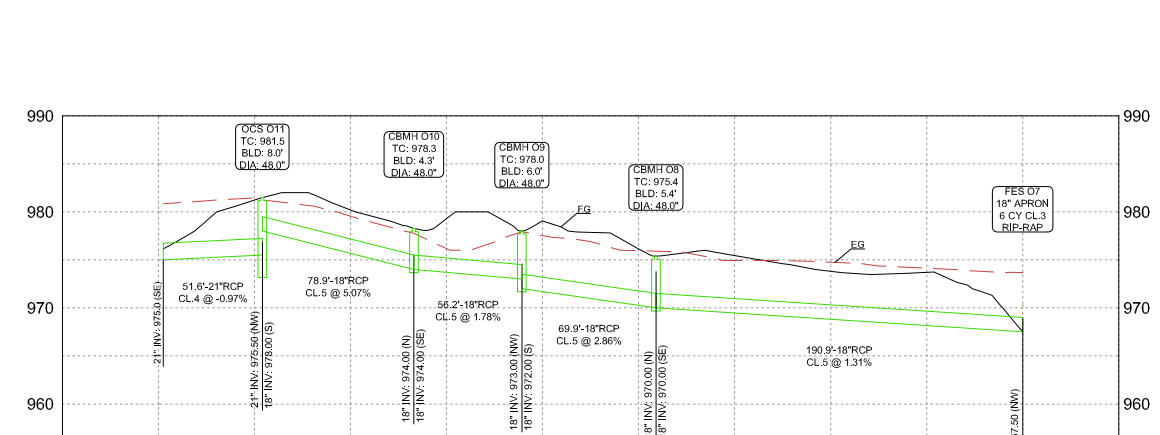
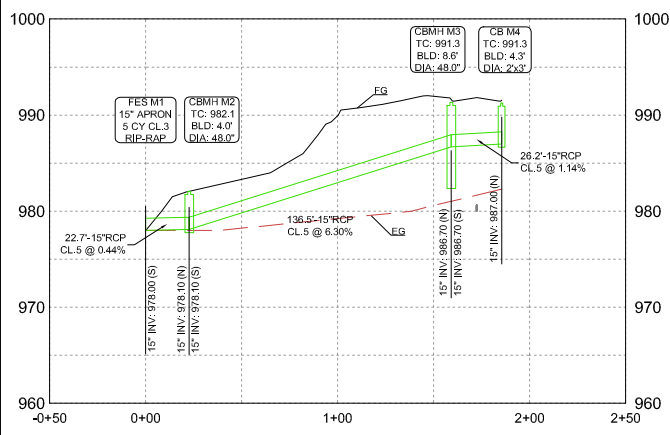
28

48

PROJECT NAME AND NUMBER



LEGEND		
DESCRIPTION	PROPOSED	EXISTING
BUILDING SETBACK LINE	BSBL	BSBL
GARAGE SETBACK LINE	GSBL	GSBL
PARCEL BOUNDARY LINE		
DRAINAGE AND UTILITY EASEMENTS		
CURB AND GUTTER		
RIGHT-OF-WAY		
SANWWM SERVICE		
BACKYARD CATCH BASIN		
CATCH BASIN		
STORM SEWER MANHOLE		
FLARED END SECTION WRIP-RAP		
STORM STRUCTURE LABEL	CB H3	CB H3
SANITARY STRUCTURE LABEL		
SANITARY SEWER MANHOLE		
WATERMAIN		
HYDRANT		
GATE VALVE		
DRAIN TILE / CLEANOUT		
PLASTIC CATCH-BASIN		



DRAWING NAME	NO.	BY	DATE	REVISIONS
HD - SW				
DRAWN BY				
CHECKED BY				
DATE				
06/30/21				

USE (INCLUDING COPYING, DISTRIBUTION, AND/OR CONVEYANCE OF INFORMATION) OF THIS PRODUCT IS STRICTLY PROHIBITED WITHOUT SATHRE-BERGQUIST, INC.'S EXPRESS WRITTEN AUTHORIZATION. USE WITHOUT SAID AUTHORIZATION CONSTITUTES AN ILLEGITIMATE USE AND SHALL THEREBY INDEMNIFY SATHRE-BERGQUIST, INC. OF ALL RESPONSIBILITY. SATHRE-BERGQUIST, INC. RESERVES THE RIGHT TO HOLD ANY ILLEGITIMATE USER OR PARTY LEGALLY RESPONSIBLE FOR DAMAGES OR LOSSES RESULTING FROM ILLEGITIMATE USE.

I HEREBY CERTIFY THAT THIS PLAN OR SPECIFICATION WAS PREPARED BY ME OR UNDER MY DIRECT SUPERVISION AND THAT I AM A DULY REGISTERED PROFESSIONAL ENGINEER UNDER THE LAWS OF THE STATE OF MINNESOTA.

Robert S. Molstad
 ROBERT S. MOLSTAD, P.E.
 Date: 06/30/21 Lic. No. 26428

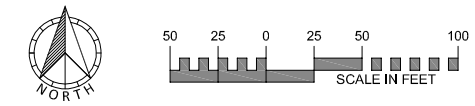
SATHRE-BERGQUIST, INC.
 150 SOUTH BROADWAY WAYZATA, MN, 55391 (952) 476-6000

CITY PROJECT NO. ---

PLYMOUTH, MINNESOTA

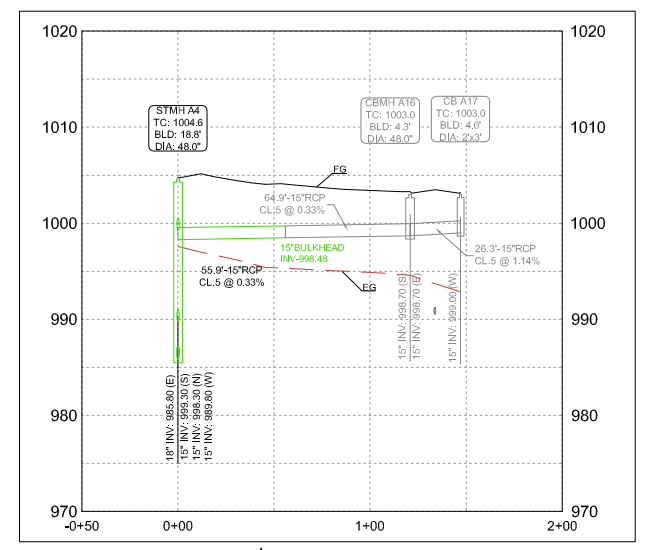
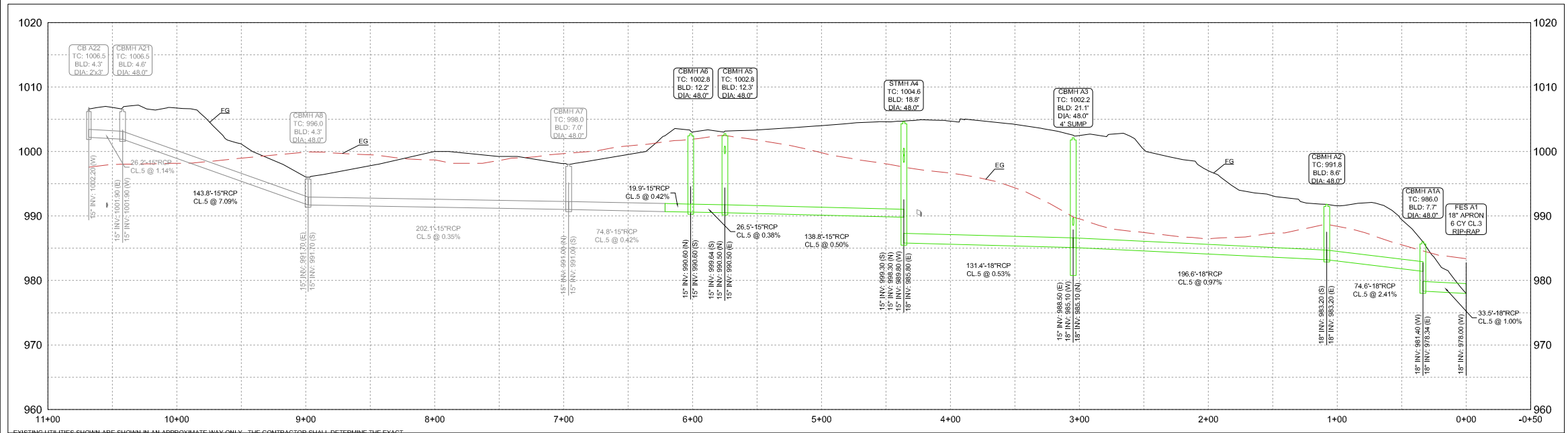
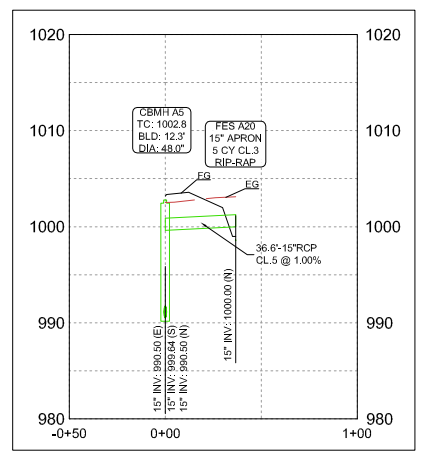
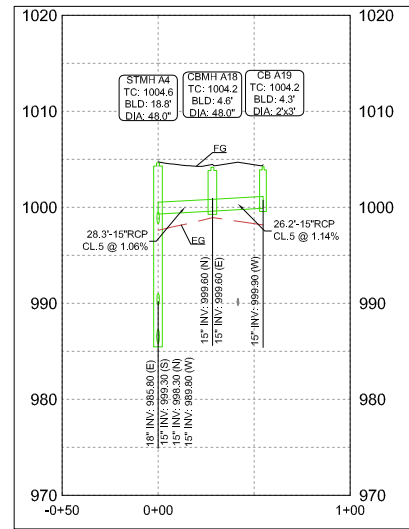
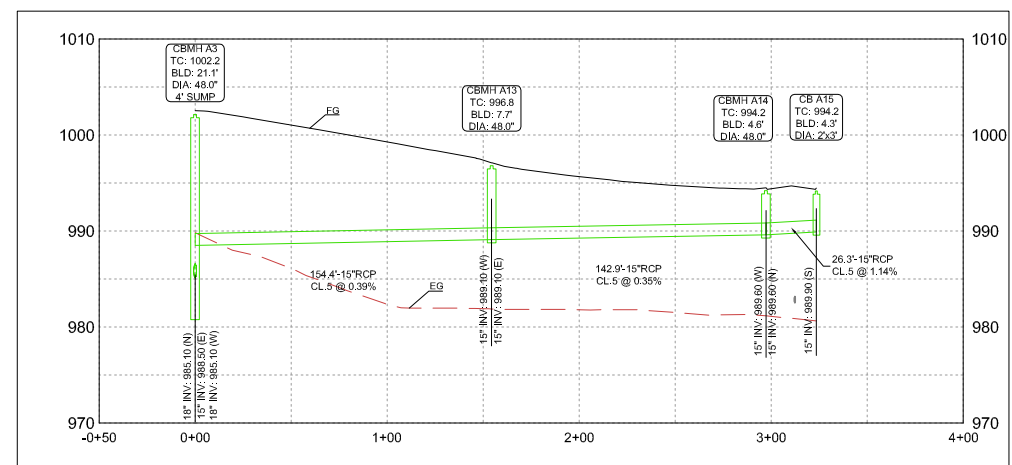
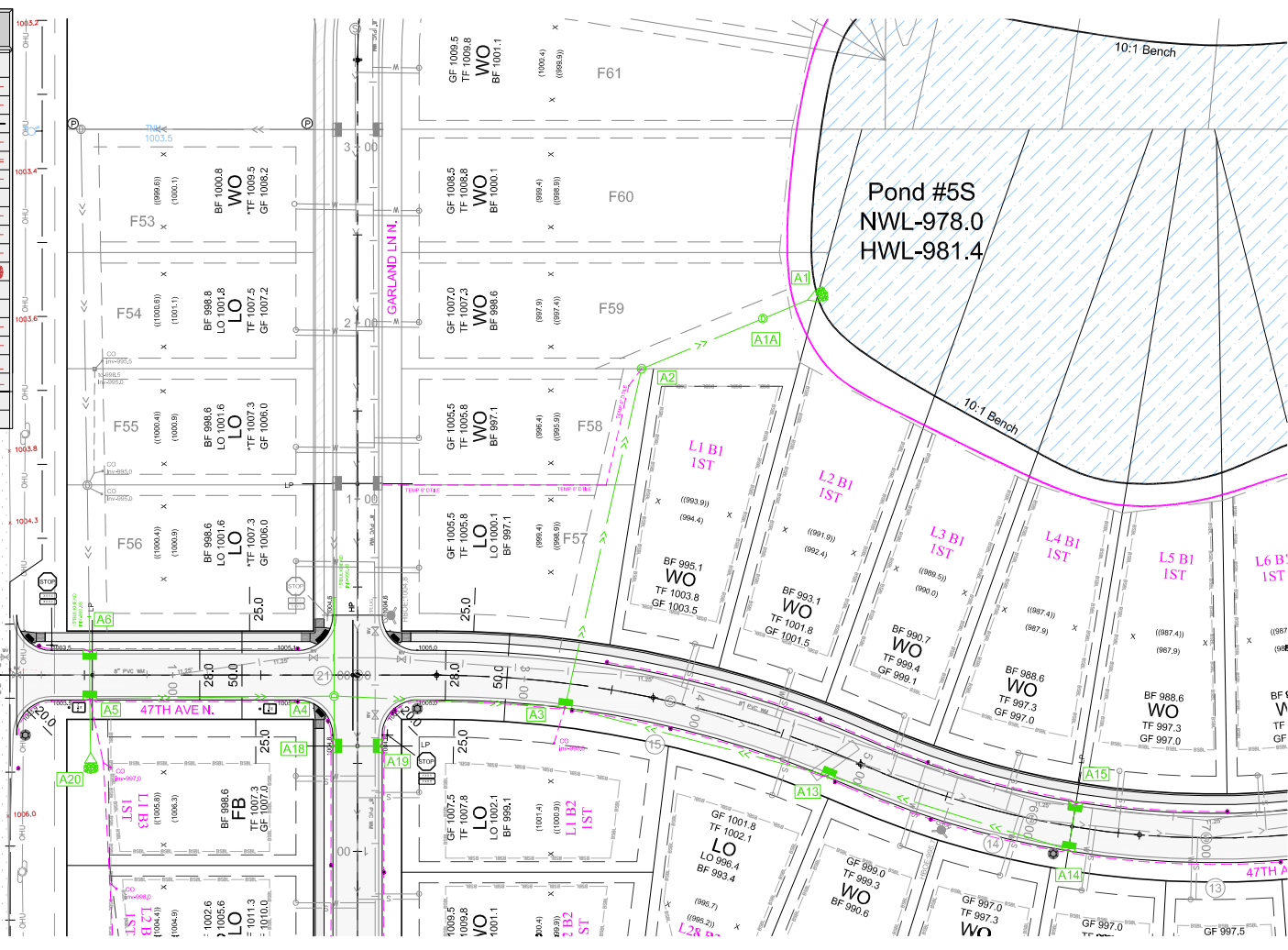
FINAL STORM SEWER PLAN
HOLLYDALE
HOLLYDALE GC DEVELOPMENT, INC

FILE NO. 3120-077
29
48



EXISTING UTILITIES SHOWN ARE SHOWN IN AN APPROXIMATE WAY ONLY. THE CONTRACTOR SHALL DETERMINE THE EXACT LOCATION OF ANY AND ALL EXISTING UTILITIES BEFORE COMMENCING WORK. HE AGREES TO BE FULLY RESPONSIBLE FOR ANY AND ALL DAMAGES ARISING OUT OF HIS FAILURE TO EXACTLY LOCATE AND PRESERVE ANY AND ALL EXISTING UTILITIES.

LEGEND		
DESCRIPTION	PROPOSED	EXISTING
BUILDING SETBACK LINE	B'SBL	B'SBL
GARAGE SETBACK LINE	G'SBL	G'SBL
PARCEL BOUNDARY LINE	P'SBL	P'SBL
DRAINAGE AND UTILITY EASEMENTS		
CURB AND GUTTER		
RIGHT-OF-WAY		
SANITARY SERVICE		
BACKYARD CATCH BASIN		
CATCH BASIN		
STORM SEWER MANHOLE		
FLARED END SECTION WRIP-RAP		
STORM STRUCTURE LABEL	CB H13	CB H13
SANITARY STRUCTURE LABEL		
SANITARY SEWER MANHOLE		
WATERMAIN		
HYDRANT		
GATE VALVE		
DRAIN TILE / CLEANOUT		
PLASTIC CATCH BASIN		



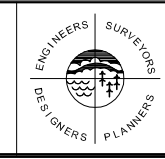
EXISTING UTILITIES SHOWN ARE SHOWN IN AN APPROXIMATE WAY ONLY. THE CONTRACTOR SHALL DETERMINE THE EXACT LOCATION OF ANY AND ALL EXISTING UTILITIES BEFORE COMMENCING WORK. HE AGREES TO BE FULLY RESPONSIBLE FOR ANY AND ALL DAMAGES ARISING OUT OF HIS FAILURE TO EXACTLY LOCATE AND PRESERVE ANY AND ALL EXISTING UTILITIES.

DRAWING NAME	NO.	BY	DATE	REVISIONS
HD - SW				
DRAWN BY				
ERJ				
CHECKED BY				
RSM				
DATE				
06/30/21				

USE (INCLUDING COPYING, DISTRIBUTION, AND/OR CONVEYANCE OF INFORMATION) OF THIS PRODUCT IS STRICTLY PROHIBITED WITHOUT SATHRE-BERGQUIST, INC.'S EXPRESS WRITTEN AUTHORIZATION. USE WITHOUT SAID AUTHORIZATION CONSTITUTES AN ILLEGITIMATE USE AND SHALL THEREBY INDEMNIFY SATHRE-BERGQUIST, INC. OF ALL RESPONSIBILITY. SATHRE-BERGQUIST, INC. RESERVES THE RIGHT TO HOLD ANY ILLEGITIMATE USER OR PARTY LEGALLY RESPONSIBLE FOR DAMAGES OR LOSSES RESULTING FROM ILLEGITIMATE USE.

I HEREBY CERTIFY THAT THIS PLAN OR SPECIFICATION WAS PREPARED BY ME OR UNDER MY DIRECT SUPERVISION AND THAT I AM A DULY REGISTERED PROFESSIONAL ENGINEER UNDER THE LAWS OF THE STATE OF MINNESOTA.

Robert S. Molstad
 ROBERT S. MOLSTAD, P.E.
 Date: 06/30/21 Lic. No. 26428



SATHRE-BERGQUIST, INC.
 150 SOUTH BROADWAY WAYZATA, MN. 55391 (952) 476-6000

CITY PROJECT NO. ---
PLYMOUTH, MINNESOTA

FINAL STORM SEWER PLAN
HOLLYDALE
HOLLYDALE GC DEVELOPMENT, INC

FILE NO. 3120-077
30
48