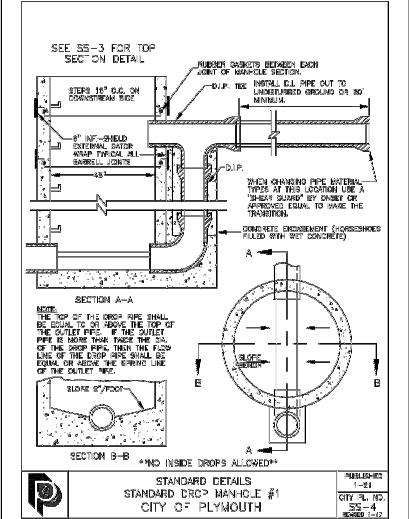
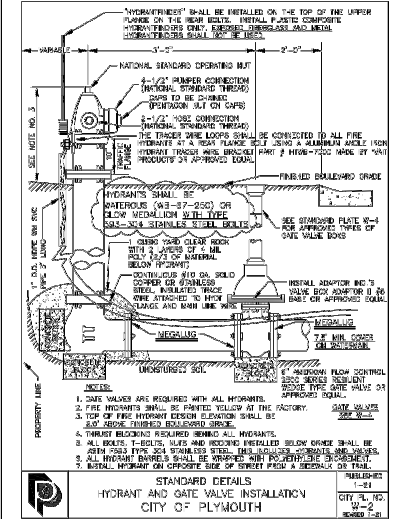
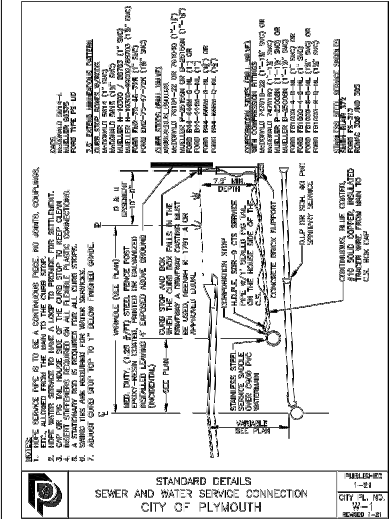
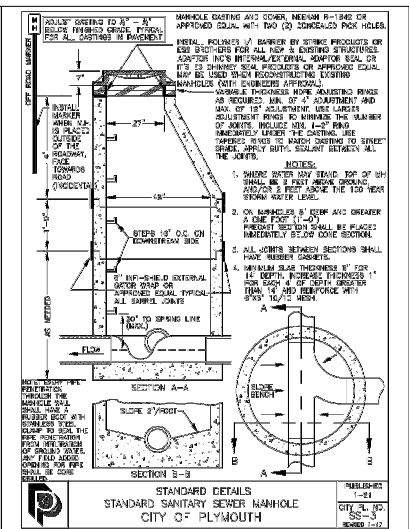
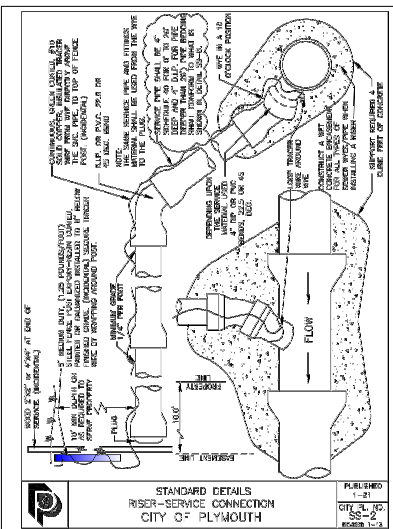


SANITARY SEWER AND WATERMAIN NOTES:

- ALL DIP FOR SANITARY SEWER LINES SHALL BE POLY-WRAPPED AND ALL BOLTS USED SHALL BE STAINLESS STEEL (ASTM F593 TYPE 304).
- REFER TO DETAIL SHEETS TO SEE STRUCTURE DETAILS.
- AFTER FILTRATION BASINS ARE EXCAVATED DO NOT DRIVE ON OR STORE MATERIALS IN THAT AREA.
- ALL HYDRANT BENCHMARKS ARE TOP NUT OF HYDRANT.
- WYE LOCATIONS TO BE SUPPLIED & VERIFIED BY CONTRACTORS. WYE STATIONING IS CALCULATED FROM THE DOWN STREAM MANHOLES.
- ALL TIES AND DISTANCES ARE TO THE CENTER OF SURFACE STRUCTURES.
- ALL HYDRANTS AND HYDRANT GATE VALVES ARE RESTRAINED AND TIED BACK TO THE WATERMAIN TEE BY MEANS OF APPROVED METALGUS UNLESS OTHERWISE NOTED.
- ALL SEWER SERVICES ARE LOCATED 3 FEET DOWNSTREAM OF WATER SERVICES IF SEWER AND WATER ARE IN THE SAME TRENCH.
- ALL SEWER AND WATER SERVICES ARE EXTENDED 10 FEET BEYOND THE PROPERTY LINE UNLESS OTHERWISE NOTED.
- ALL VALVES ON THE WATERMAIN FOR THIS PROJECT SHALL BE GATE VALVES. NO BUTTERFLY VALVES SHALL BE USED ON THE WATERMAIN FOR THIS PROJECT.
- THE CITY OF PLYMOUTH'S CURRENT "ENGINEERING GUIDELINES" AND "SPECIFICATIONS" SHALL GOVERN.
- INSTALL HYDRANTS 5' BEHIND CURB (TYPICAL). NO HYDRANTS SHALL BE INSTALLED ON SIDEWALK SIDE OF THE ROAD.
- POLY WRAP ALL HYDRANT BARRELS
- BAG ALL HYDRANTS UNTIL THEY ARE TESTED AND PUT IN SERVICE.

- ALL 4"-12" WATERMAIN SHALL BE PVC C900 (DR18). ALL 16" WATERMAIN SHALL BE PVC C905 (DR18).
- MECHANICAL BALLS SHALL BE INSTALLED IN SANITARY SEWER AT CONNECTION POINTS FOLLOWING INSTALLATION OF PIPE TO PROTECT EXISTING LINES FROM DEBRIS & SEDIMENT INFILTRATION. BALLS SHALL REMAIN UNTIL LINES ARE TELEVIEWED & ACCEPTED BY THE CITY.
- THE CONTRACTOR SHALL CONTACT THE SEWER AND WATER DEPARTMENT AT 783-500-5500 AT LEAST 48 HOURS PRIOR TO ANY PUBLIC SEWER/WATERMAIN CONNECTION.
- USE AN 8" WIDE EXTERNAL SEAL WRAP, "INF-SHIELD" OR APPROVED EQUAL WITH ALL SANITARY SEWER MANHOLES.
- ALL SANITARY SEWER MANHOLE ADJUSTING RINGS INSTALLATIONS SHALL HAVE POLYMER II BARRIERS BY "STRIKE PRODUCTS" OR APPROVED EQUAL INSTALLED.
- HOPE ADJUSTING RINGS SHALL BE USED ON ALL MANHOLES AND CATCH BASINS.
- ALL BELOW GRADE BOLTS, T-BOLTS, NUTS AND RODDING SHALL BE ASTM F 593 TYPE 304. THIS APPLIES TO ALL FITTINGS, GATE VALVES, AND HYDRANTS.
- RESTRAIN VERTICAL BENDS WITH STAINLESS STEEL TIE RODS PER CITY SPECIFICATION PLY 02205.9.
- CONSTRUCT ACCESS DRIVE PER DETAIL SS-9
- WATER SERVICES SHALL BE 1" POLYETHYLENE PIPE. SANITARY SERVICES SHALL BE 4" SCH 40 PVC.

LEGEND		
DESCRIPTION	PROPOSED	EXISTING
BUILDING SETBACK LINE	BSBL	BSBL
GARAGE SETBACK LINE	GSBL	GSBL
PARCEL BOUNDARY LINE		
DRAINAGE AND UTILITY EASEMENTS		
CURB AND GUTTER		
RIGHT-OF-WAY		
SANWMM SERVICE		
BACKYARD CATCH BASIN		
CATCH BASIN		
STORM SEWER MANHOLE		
FLARED END SECTION WRIP-RAP		
STORM STRUCTURE LABEL	(CB H3)	(CB H3)
SANITARY STRUCTURE LABEL	(MH)	(MH)
SANITARY SEWER MANHOLE		
WATERMAIN		
HYDRANT		
GATE VALVE		
DRAIN TILE / CLEANOUT		
PLASTIC CATCH BASIN		



GENERAL NOTES:

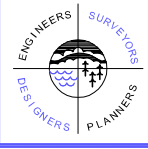
- SSW INDICATES SANITARY & WATERMAIN SERVICE
- X+XX INDICATES SANITARY SERVICE STATION (FROM DOWNSTREAM MANHOLE)
- XXXX INDICATES SERVICE ELEVATION
- X'R INDICATES RISER HEIGHT (IF NEEDED)
- INSTALL SERVICES UNDER STORM INDICATES SERVICES TO BE INSTALLED UNDER STORM WITH MINIMUM SEPARATION OF 24" OR PROVIDE MINIMUM OF 12" AND 4" OF INSULATION BETWEEN STORM AND SERVICES.

DRAWING NAME	NO.	BY	DATE	REVISIONS
HD - SW				
DRAWN BY				
CHECKED BY				
DATE				
06/30/21				

USE (INCLUDING COPYING, DISTRIBUTION, AND/OR CONVEYANCE OF INFORMATION) OF THIS PRODUCT IS STRICTLY PROHIBITED WITHOUT SATHRE-BERGQUIST, INC.'S EXPRESS WRITTEN AUTHORIZATION. USE WITHOUT SAID AUTHORIZATION CONSTITUTES AN ILLEGITIMATE USE AND SHALL THEREBY INDEMNIFY SATHRE-BERGQUIST, INC. OF ALL RESPONSIBILITY. SATHRE-BERGQUIST, INC. RESERVES THE RIGHT TO HOLD ANY ILLEGITIMATE USER OR PARTY LEGALLY RESPONSIBLE FOR DAMAGES OR LOSSES RESULTING FROM ILLEGITIMATE USE.

I HEREBY CERTIFY THAT THIS PLAN OR SPECIFICATION WAS PREPARED BY ME OR UNDER MY DIRECT SUPERVISION AND THAT I AM A DULY REGISTERED PROFESSIONAL ENGINEER UNDER THE LAWS OF THE STATE OF MINNESOTA.

Robert S. Molstad
ROBERT S. MOLSTAD, P.E.
Date: 06/30/21 Lic. No. 26428

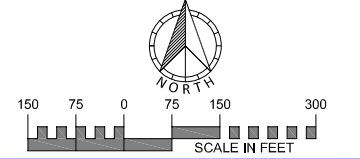


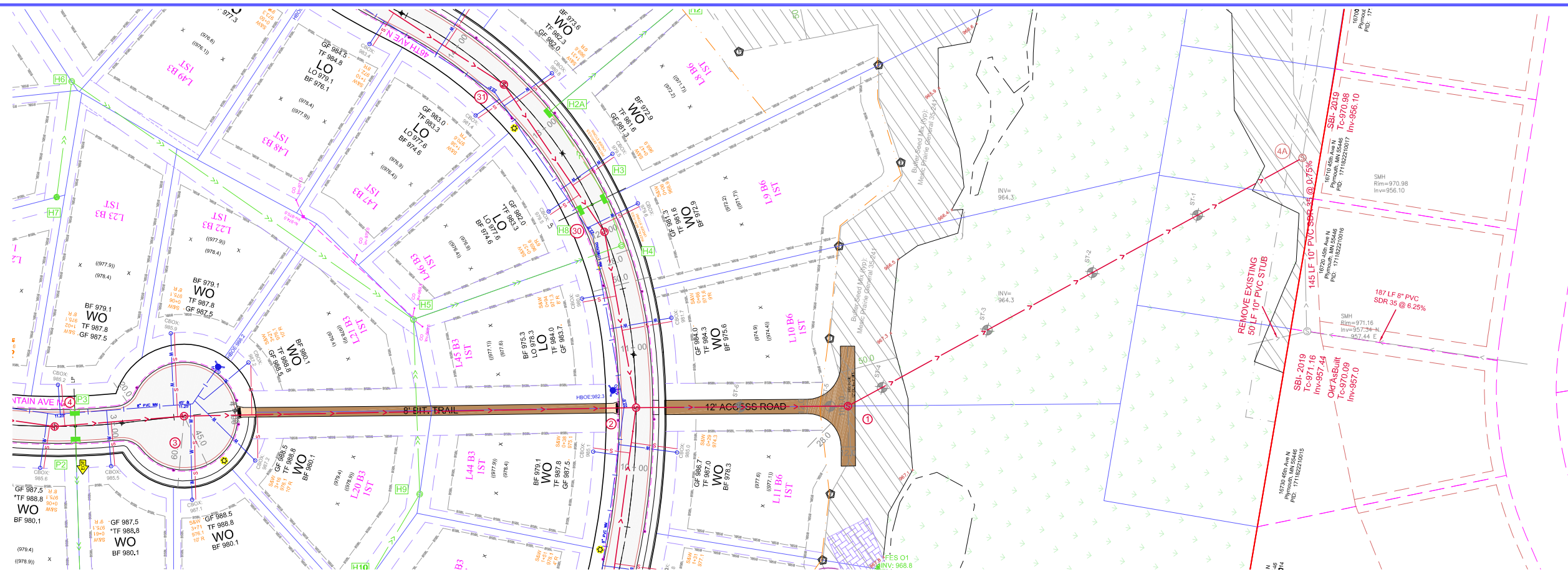
SATHRE-BERGQUIST, INC.
150 SOUTH BROADWAY WAYZATA, MN, 55391 (952) 476-6000

CITY PROJECT NO. ---
PLYMOUTH, MINNESOTA

FINAL SANITARY SEWER & WATERMAIN PLAN
HOLLYDALE
HOLLYDALE GC DEVELOPMENT, INC

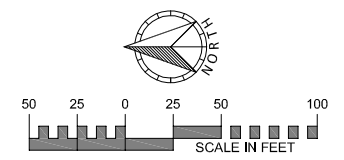
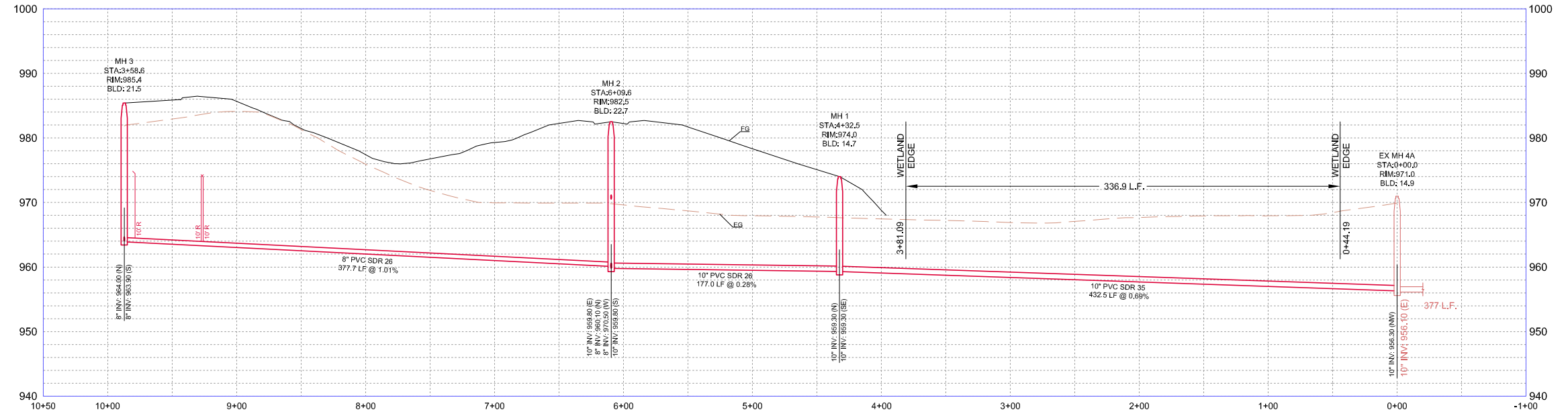
FILE NO. 3120-077
12
48





LEGEND		
DESCRIPTION	PROPOSED	EXISTING
BUILDING SETBACK LINE	B'SBL	B'SBL
GARAGE SETBACK LINE	G'SBL	G'SBL
PARCEL BOUNDARY LINE		
DRAINAGE AND UTILITY EASEMENTS		
CURB AND GUTTER		
RIGHT-OF-WAY		
SAN/WM SERVICE		
BACKYARD CATCH BASIN		
CATCH BASIN		
STORM SEWER MANHOLE		
FLARED END SECTION WRIP-RAP		
STORM STRUCTURE LABEL	[CB H3]	[CB H3]
SANITARY STRUCTURE LABEL	[SBL]	[SBL]
SANITARY SEWER MANHOLE		
WATERMAIN		
HYDRANT		
GATE VALVE		
DRAIN TILE / CLEANOUT		
PLASTIC CATCHBASIN		

SANITARY SEWER CONNECTION (SOUTH)



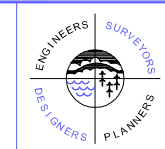
EXISTING UTILITIES SHOWN ARE SHOWN IN AN APPROXIMATE WAY ONLY. THE CONTRACTOR SHALL DETERMINE THE EXACT LOCATION OF ANY AND ALL EXISTING UTILITIES BEFORE COMMENCING WORK. HE AGREES TO BE FULLY RESPONSIBLE FOR ANY AND ALL DAMAGES ARISING OUT OF HIS FAILURE TO EXACTLY LOCATE AND PRESERVE ANY AND ALL EXISTING UTILITIES.

DRAWING NAME	NO.	BY	DATE	REVISIONS
HD - SW				
DRAWN BY				
CHECKED BY				
DATE				
06/30/21				

USE (INCLUDING COPYING, DISTRIBUTION, AND/OR CONVEYANCE OF INFORMATION) OF THIS PRODUCT IS STRICTLY PROHIBITED WITHOUT SATHRE-BERGQUIST, INC.'S EXPRESS WRITTEN AUTHORIZATION. USE WITHOUT SAID AUTHORIZATION CONSTITUTES AN ILLEGITIMATE USE AND SHALL THEREBY INDEMNIFY SATHRE-BERGQUIST, INC. OF ALL RESPONSIBILITY. SATHRE-BERGQUIST, INC. RESERVES THE RIGHT TO HOLD ANY ILLEGITIMATE USER OR PARTY LEGALLY RESPONSIBLE FOR DAMAGES OR LOSSES RESULTING FROM ILLEGITIMATE USE.

I HEREBY CERTIFY THAT THIS PLAN OR SPECIFICATION WAS PREPARED BY ME OR UNDER MY DIRECT SUPERVISION AND THAT I AM A DULY REGISTERED PROFESSIONAL ENGINEER UNDER THE LAWS OF THE STATE OF MINNESOTA.

Robert S. Molstad
 ROBERT S. MOLSTAD, P.E.
 Date: 06/30/21 Lic. No. 26428

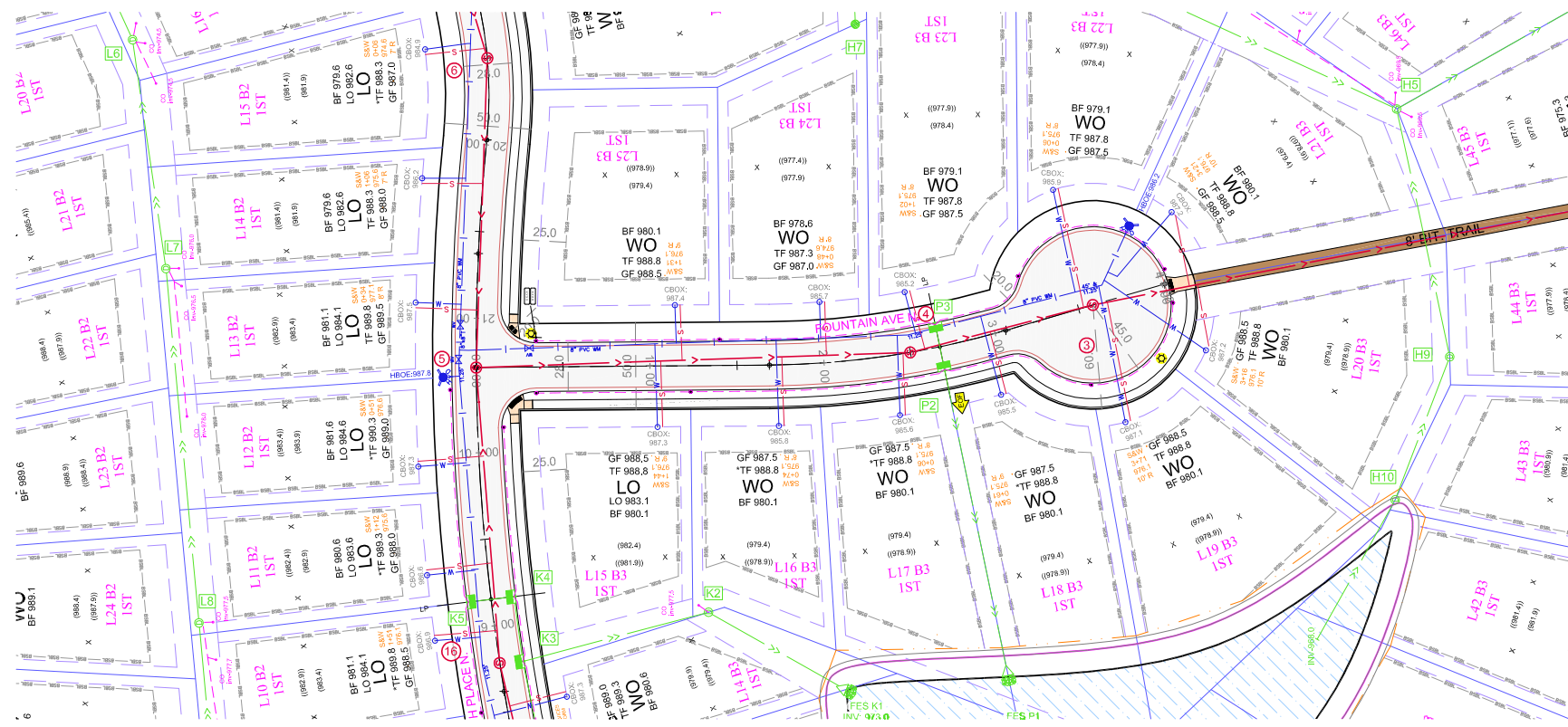


SATHRE-BERGQUIST, INC.
 150 SOUTH BROADWAY WAYZATA, MN. 55391 (952) 476-6000

CITY PROJECT NO.
 --
 PLYMOUTH, MINNESOTA

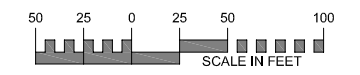
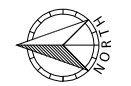
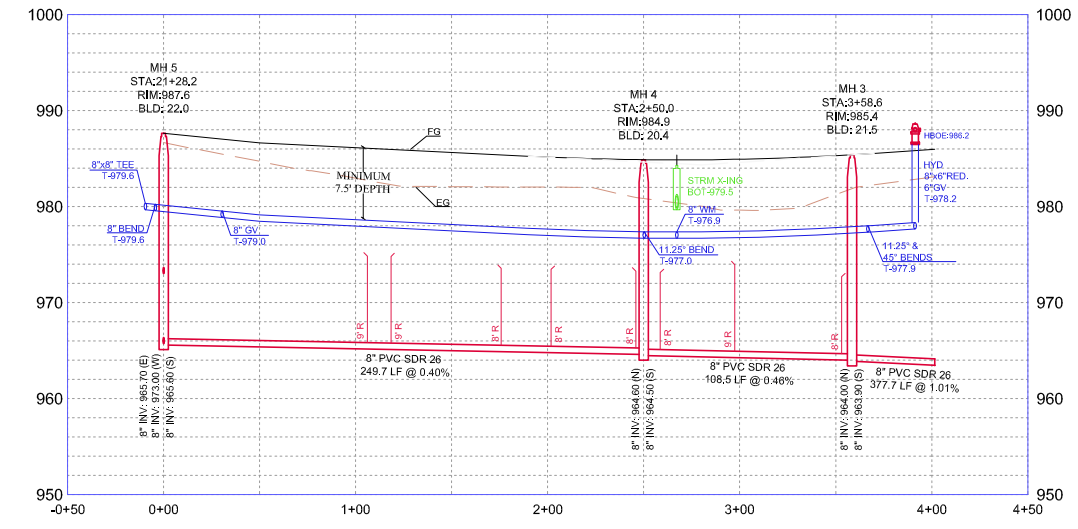
FINAL SANITARY SEWER & WATERMAIN PLAN
 HOLLYDALE
 HOLLYDALE GC DEVELOPMENT, INC

FILE NO.
 3120-077
 13
 48



LEGEND		
DESCRIPTION	PROPOSED	EXISTING
BUILDING SETBACK LINE	B5BL	B5BL
GARAGE SETBACK LINE	G5BL	G5BL
PARCEL BOUNDARY LINE		
DRAINAGE AND UTILITY EASEMENTS		
CURB AND GUTTER		
RIGHT-OF-WAY		
SANWM SERVICE		
BACKYARD CATCH BASIN		
CATCH BASIN		
STORM SEWER MANHOLE		
FLARED END SECTION WRAP-RAP		
STORM STRUCTURE LABEL	CB H3	CB H3
SANITARY STRUCTURE LABEL		
SANITARY SEWER MANHOLE		
WATERMAIN		
HYDRANT		
GATE VALVE		
DRAIN TILE / CLEANOUT		
PLASTIC CATCHBASIN		

FOUNTAIN AVE N.



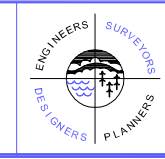
EXISTING UTILITIES SHOWN ARE SHOWN IN AN APPROXIMATE WAY ONLY. THE CONTRACTOR SHALL DETERMINE THE EXACT LOCATION OF ANY AND ALL EXISTING UTILITIES BEFORE COMMENCING WORK. HE AGREES TO BE FULLY RESPONSIBLE FOR ANY AND ALL DAMAGES ARISING OUT OF HIS FAILURE TO EXACTLY LOCATE AND PRESERVE ANY AND ALL EXISTING UTILITIES.

DRAWING NAME	NO.	BY	DATE	REVISIONS
HD - SW				
DRAWN BY				
ERJ				
CHECKED BY				
RSM				
DATE				
06/30/21				

USE (INCLUDING COPYING, DISTRIBUTION, AND/OR CONVEYANCE OF INFORMATION) OF THIS PRODUCT IS STRICTLY PROHIBITED WITHOUT SATHRE-BERGQUIST, INC.'S EXPRESS WRITTEN AUTHORIZATION. USE WITHOUT SAID AUTHORIZATION CONSTITUTES AN ILLEGITIMATE USE AND SHALL THEREBY INDEMNIFY SATHRE-BERGQUIST, INC. OF ALL RESPONSIBILITY. SATHRE-BERGQUIST, INC. RESERVES THE RIGHT TO HOLD ANY ILLEGITIMATE USER OR PARTY LEGALLY RESPONSIBLE FOR DAMAGES OR LOSSES RESULTING FROM ILLEGITIMATE USE.

I HEREBY CERTIFY THAT THIS PLAN OR SPECIFICATION WAS PREPARED BY ME OR UNDER MY DIRECT SUPERVISION AND THAT I AM A DULY REGISTERED PROFESSIONAL ENGINEER UNDER THE LAWS OF THE STATE OF MINNESOTA.

Robert S. Molstad
 ROBERT S. MOLSTAD, P.E.
 Date: 06/30/21 Lic. No. 26728

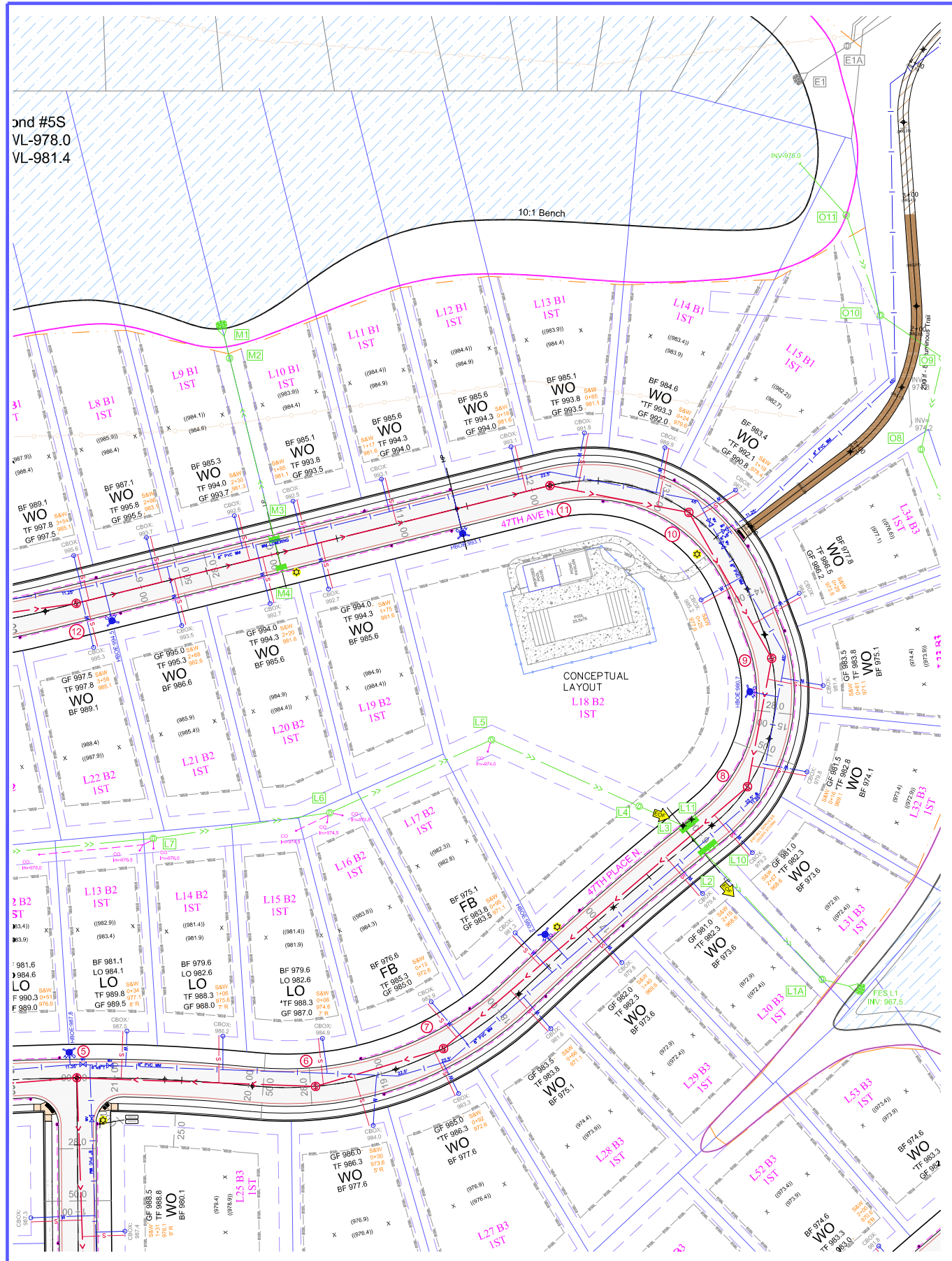


SATHRE-BERGQUIST, INC.
 150 SOUTH BROADWAY WAYZATA, MN. 55391 (952) 476-6000

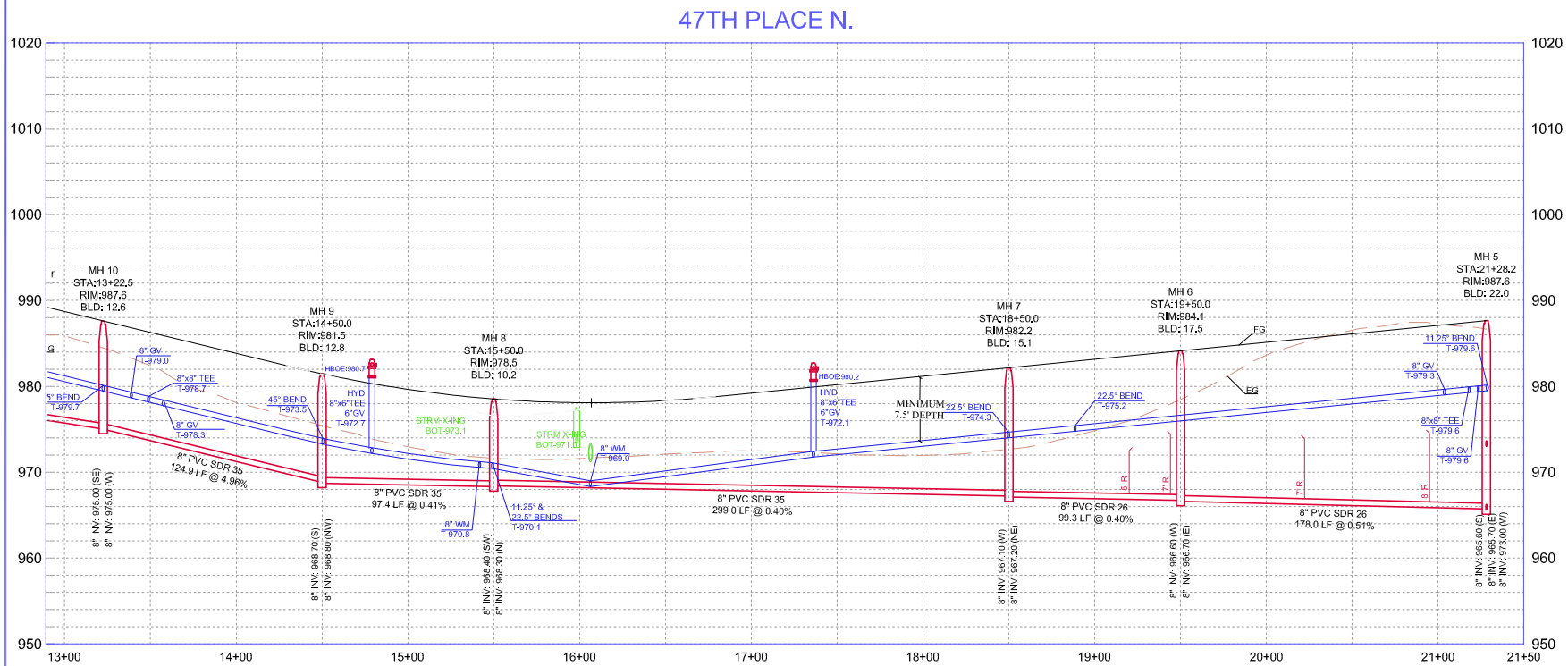
CITY PROJECT NO.
 --
 PLYMOUTH,
 MINNESOTA

FINAL STREET PLAN
 HOLLYDALE
 HOLLYDALE GC DEVELOPMENT, INC

FILE NO.
 3120-077
 14
 48



LEGEND		
DESCRIPTION	PROPOSED	EXISTING
BUILDING SETBACK LINE	BSBL	BSBL
GARAGE SETBACK LINE	GSBL	GSBL
PARCEL BOUNDARY LINE		
DRAINAGE AND UTILITY EASEMENTS		
CURB AND GUTTER		
RIGHT-OF-WAY		
SAN/WM SERVICE		
BACKYARD CATCH BASIN		
CATCH BASIN		
STORM SEWER MANHOLE		
FLARED END SECTION WRIP-RAP		
STORM STRUCTURE LABEL	CB H3	CB H3
SANITARY STRUCTURE LABEL		
SANITARY SEWER MANHOLE		
WATERMAIN		
HYDRANT		
GATE VALVE		
DRAIN TILE / CLEANOUT		
PLASTIC CATCH BASIN		



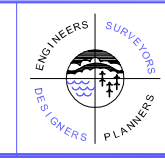
EXISTING UTILITIES SHOWN ARE SHOWN IN AN APPROXIMATE WAY ONLY. THE CONTRACTOR SHALL DETERMINE THE EXACT LOCATION OF ANY AND ALL EXISTING UTILITIES BEFORE COMMENCING WORK. HE AGREES TO BE FULLY RESPONSIBLE FOR ANY AND ALL DAMAGES ARISING OUT OF HIS FAILURE TO EXACTLY LOCATE AND PRESERVE ANY AND ALL EXISTING UTILITIES.

DRAWING NAME	NO.	BY	DATE	REVISIONS
HD - SW				
DRAWN BY				
CHECKED BY				
DATE				

USE (INCLUDING COPYING, DISTRIBUTION, AND/OR CONVEYANCE OF INFORMATION) OF THIS PRODUCT IS STRICTLY PROHIBITED WITHOUT SATHRE-BERGQUIST, INC.'S EXPRESS WRITTEN AUTHORIZATION. USE WITHOUT SAID AUTHORIZATION CONSTITUTES AN ILLEGITIMATE USE AND SHALL THEREBY INDEMNIFY SATHRE-BERGQUIST, INC. OF ALL RESPONSIBILITY. SATHRE-BERGQUIST, INC. RESERVES THE RIGHT TO HOLD ANY ILLEGITIMATE USER OR PARTY LEGALLY RESPONSIBLE FOR DAMAGES OR LOSSES RESULTING FROM ILLEGITIMATE USE.

I HEREBY CERTIFY THAT THIS PLAN OR SPECIFICATION WAS PREPARED BY ME OR UNDER MY DIRECT SUPERVISION AND THAT I AM A DULY REGISTERED PROFESSIONAL ENGINEER UNDER THE LAWS OF THE STATE OF MINNESOTA.

Robert S. Molstad
 ROBERT S. MOLSTAD, P.E.
 Date: 06/30/21 Lic. No. 26428

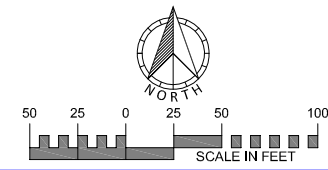


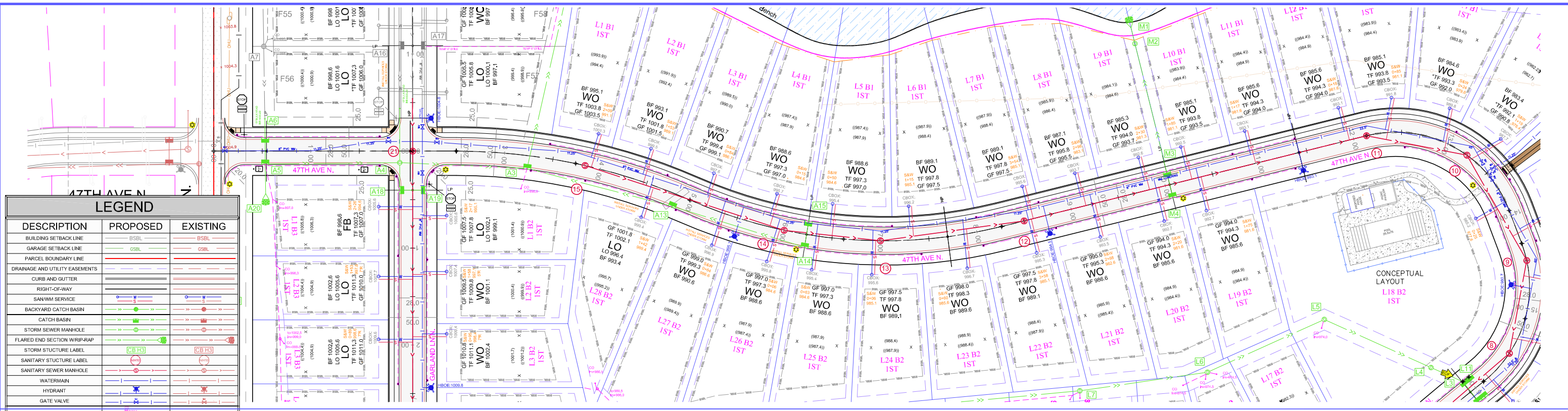
SATHRE-BERGQUIST, INC.
 150 SOUTH BROADWAY WAYZATA, MN. 55391 (952) 476-6000

CITY PROJECT NO.
 PLYMOUTH, MINNESOTA

FINAL SANITARY SEWER & WATERMAIN PLAN
 HOLLYDALE
 HOLLYDALE GC DEVELOPMENT, INC

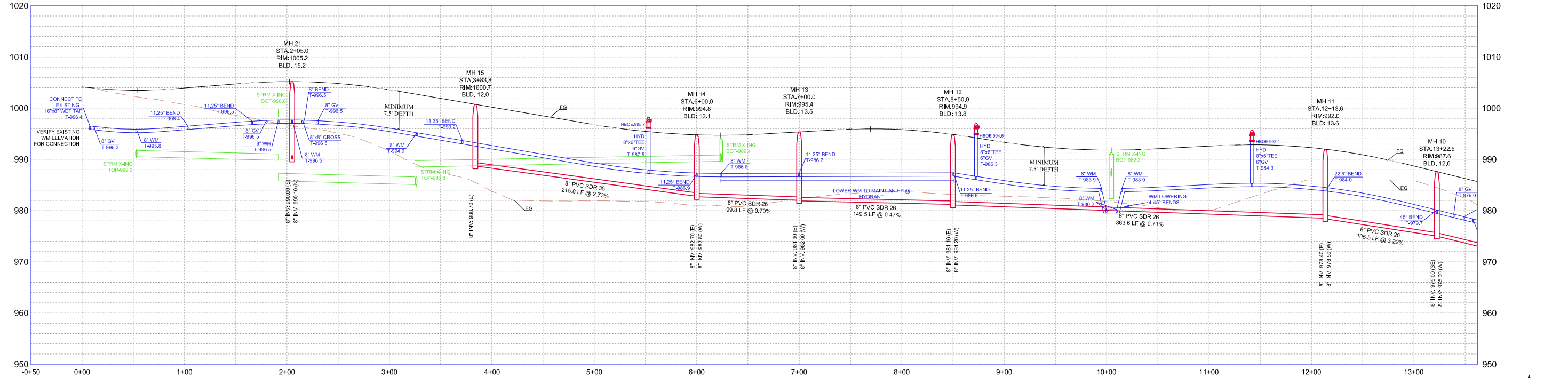
FILE NO.
 3120-077
 15
 48





LEGEND		
DESCRIPTION	PROPOSED	EXISTING
BUILDING SETBACK LINE	BSBL	BSBL
GARAGE SETBACK LINE	GSBL	GSBL
PARCEL BOUNDARY LINE	CSBL	CSBL
DRAINAGE AND UTILITY EASEMENTS		
CURB AND GUTTER		
RIGHT-OF-WAY		
SANWM SERVICE		
BACKYARD CATCH BASIN		
CATCH BASIN		
STORM SEWER MANHOLE		
FLARED END SECTION WRIP-RAP		
STORM STRUCTURE LABEL	CB H3	CB H3
SANITARY STRUCTURE LABEL		
SANITARY SEWER MANHOLE		
WATERMAIN		
HYDRANT		
GATE VALVE		
DRAIN TILE / CLEANOUT		
PLASTIC CATCHBASIN		

47TH AVENUE



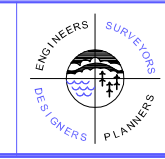
EXISTING UTILITIES SHOWN ARE SHOWN IN AN APPROXIMATE WAY ONLY. THE CONTRACTOR SHALL DETERMINE THE EXACT LOCATION OF ANY AND ALL EXISTING UTILITIES BEFORE COMMENCING WORK. HE AGREES TO BE FULLY RESPONSIBLE FOR ANY AND ALL DAMAGES ARISING OUT OF HIS FAILURE TO EXACTLY LOCATE AND PRESERVE ANY AND ALL EXISTING UTILITIES.

DRAWING NAME	NO.	BY	DATE	REVISIONS
HD - SW				
DRAWN BY				
ERJ				
CHECKED BY				
RSM				
DATE				
06/30/21				

USE (INCLUDING COPYING, DISTRIBUTION, AND/OR CONVEYANCE OF INFORMATION) OF THIS PRODUCT IS STRICTLY PROHIBITED WITHOUT SATHRE-BERGQUIST, INC.'S EXPRESS WRITTEN AUTHORIZATION. USE WITHOUT SAID AUTHORIZATION CONSTITUTES AN ILLEGITIMATE USE AND SHALL THEREBY INDEMNIFY SATHRE-BERGQUIST, INC. OF ALL RESPONSIBILITY. SATHRE-BERGQUIST, INC. RESERVES THE RIGHT TO HOLD ANY ILLEGITIMATE USER OR PARTY LEGALLY RESPONSIBLE FOR DAMAGES OR LOSSES RESULTING FROM ILLEGITIMATE USE.

I HEREBY CERTIFY THAT THIS PLAN OR SPECIFICATION WAS PREPARED BY ME OR UNDER MY DIRECT SUPERVISION AND THAT I AM A DULY REGISTERED PROFESSIONAL ENGINEER UNDER THE LAWS OF THE STATE OF MINNESOTA.

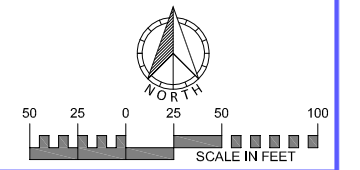
Robert S. Molstad
 ROBERT S. MOLSTAD, P.E.
 Date: 06/30/21 Lic. No. 26428



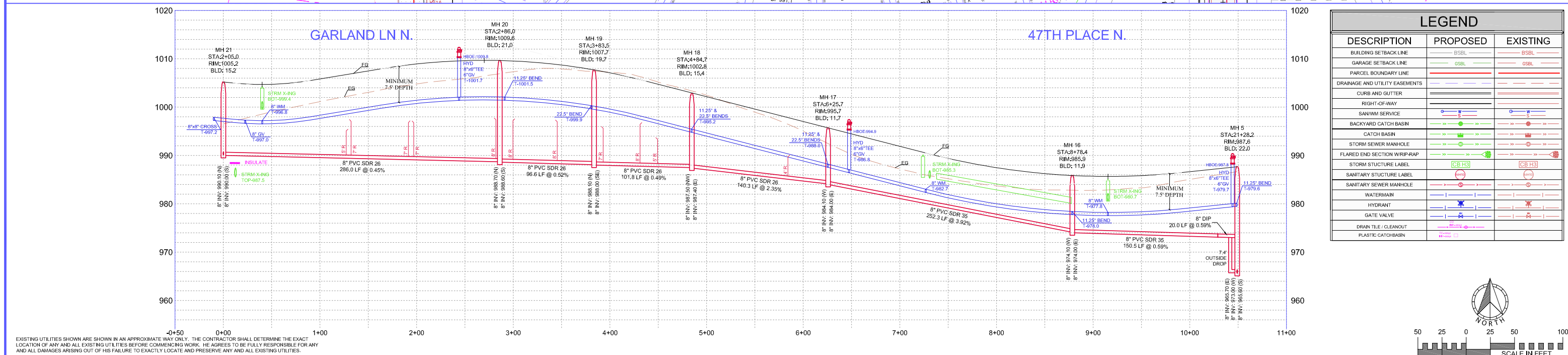
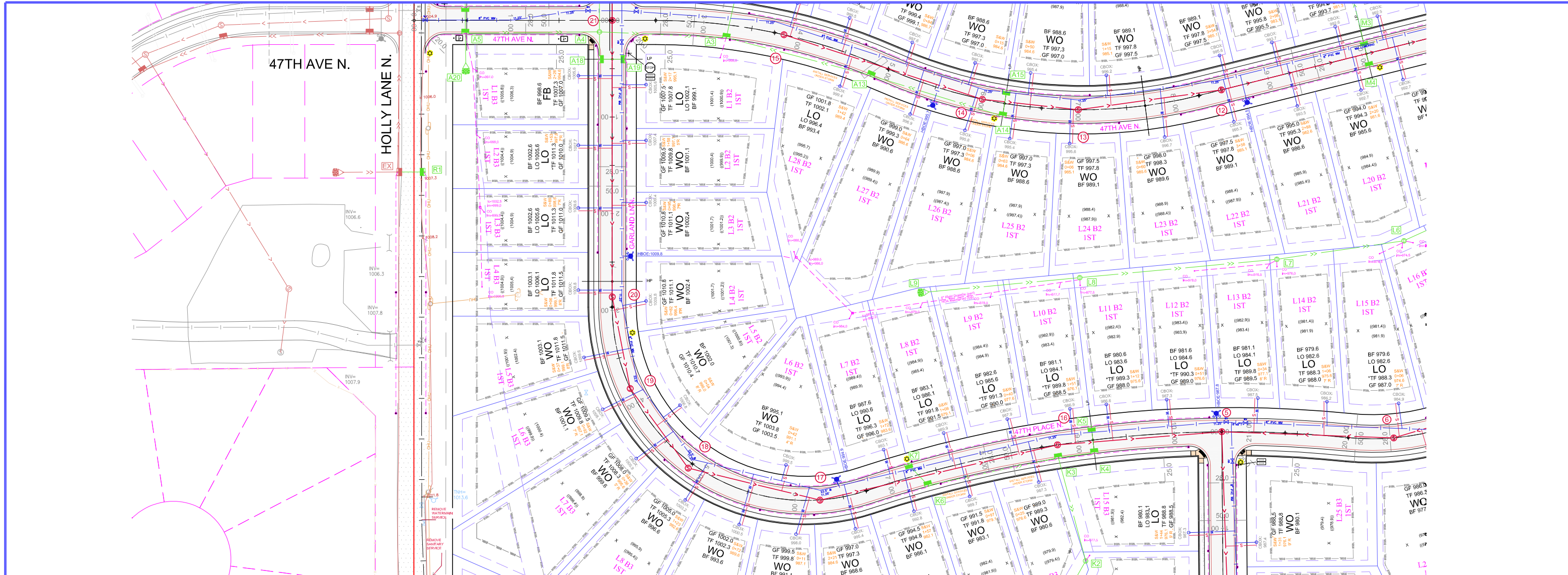
SATHRE-BERGQUIST, INC.
 150 SOUTH BROADWAY WAYZATA, MN, 55391 (952) 476-6000

CITY PROJECT NO.
 PLYMOUTH, MINNESOTA

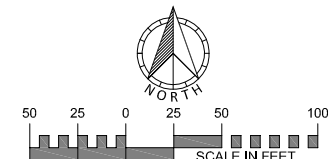
FINAL SANITARY SEWER & WATERMAIN PLAN
 HOLLYDALE
 HOLLYDALE GC DEVELOPMENT, INC



FILE NO.
 3120-077
 16
 48



LEGEND		
DESCRIPTION	PROPOSED	EXISTING
BUILDING SETBACK LINE	BSBL	BSBL
GARAGE SETBACK LINE	GSBL	GSBL
PARCEL BOUNDARY LINE		
DRAINAGE AND UTILITY EASEMENTS		
CURB AND GUTTER		
RIGHT-OF-WAY		
SANWM SERVICE		
BACKYARD CATCH BASIN		
CATCH BASIN		
STORM SEWER MANHOLE		
FLARED END SECTION WRIP-RAP		
STORM STRUCTURE LABEL	CB H3	CB H3
SANITARY STRUCTURE LABEL		
SANITARY SEWER MANHOLE		
WATERMAIN		
HYDRANT		
GATE VALVE		
DRAIN TILE / CLEANOUT		
PLASTIC CATCHBASIN		



EXISTING UTILITIES SHOWN ARE SHOWN IN AN APPROXIMATE WAY ONLY. THE CONTRACTOR SHALL DETERMINE THE EXACT LOCATION OF ANY AND ALL EXISTING UTILITIES BEFORE COMMENCING WORK. HE AGREES TO BE FULLY RESPONSIBLE FOR ANY AND ALL DAMAGES ARISING OUT OF HIS FAILURE TO EXACTLY LOCATE AND PRESERVE ANY AND ALL EXISTING UTILITIES.

DRAWING NAME	NO.	BY	DATE	REVISIONS
HD - SW				
DRAWN BY				
CHECKED BY				
DATE				
06/30/21				

USE (INCLUDING COPYING, DISTRIBUTION, AND/OR CONVEYANCE OF INFORMATION) OF THIS PRODUCT IS STRICTLY PROHIBITED WITHOUT SATHRE-BERGQUIST, INC.'S EXPRESS WRITTEN AUTHORIZATION. USE WITHOUT SAID AUTHORIZATION CONSTITUTES AN ILLEGITIMATE USE AND SHALL THEREBY INDEMNIFY SATHRE-BERGQUIST, INC. OF ALL RESPONSIBILITY. SATHRE-BERGQUIST, INC. RESERVES THE RIGHT TO HOLD ANY ILLEGITIMATE USER OR PARTY LEGALLY RESPONSIBLE FOR DAMAGES OR LOSSES RESULTING FROM ILLEGITIMATE USE.

I HEREBY CERTIFY THAT THIS PLAN OR SPECIFICATION WAS PREPARED BY ME OR UNDER MY DIRECT SUPERVISION AND THAT I AM A DULY REGISTERED PROFESSIONAL ENGINEER UNDER THE LAWS OF THE STATE OF MINNESOTA.

Robert S. Molstad
 ROBERT S. MOLSTAD, P.E.
 Date: 06/30/21 Lic. No. 26428

SATHRE-BERGQUIST, INC.
 150 SOUTH BROADWAY WAYZATA, MN. 55391 (952) 476-6000

CITY PROJECT NO. ---

PLYMOUTH, MINNESOTA

FINAL SANITARY SEWER & WATERMAIN PLAN

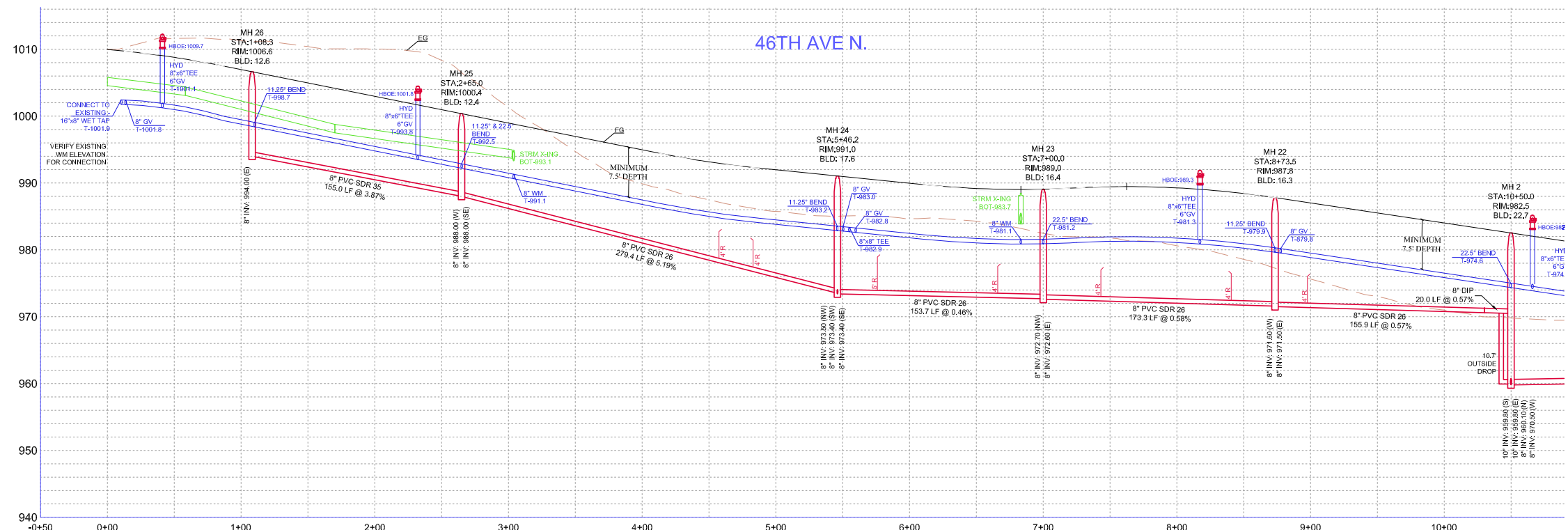
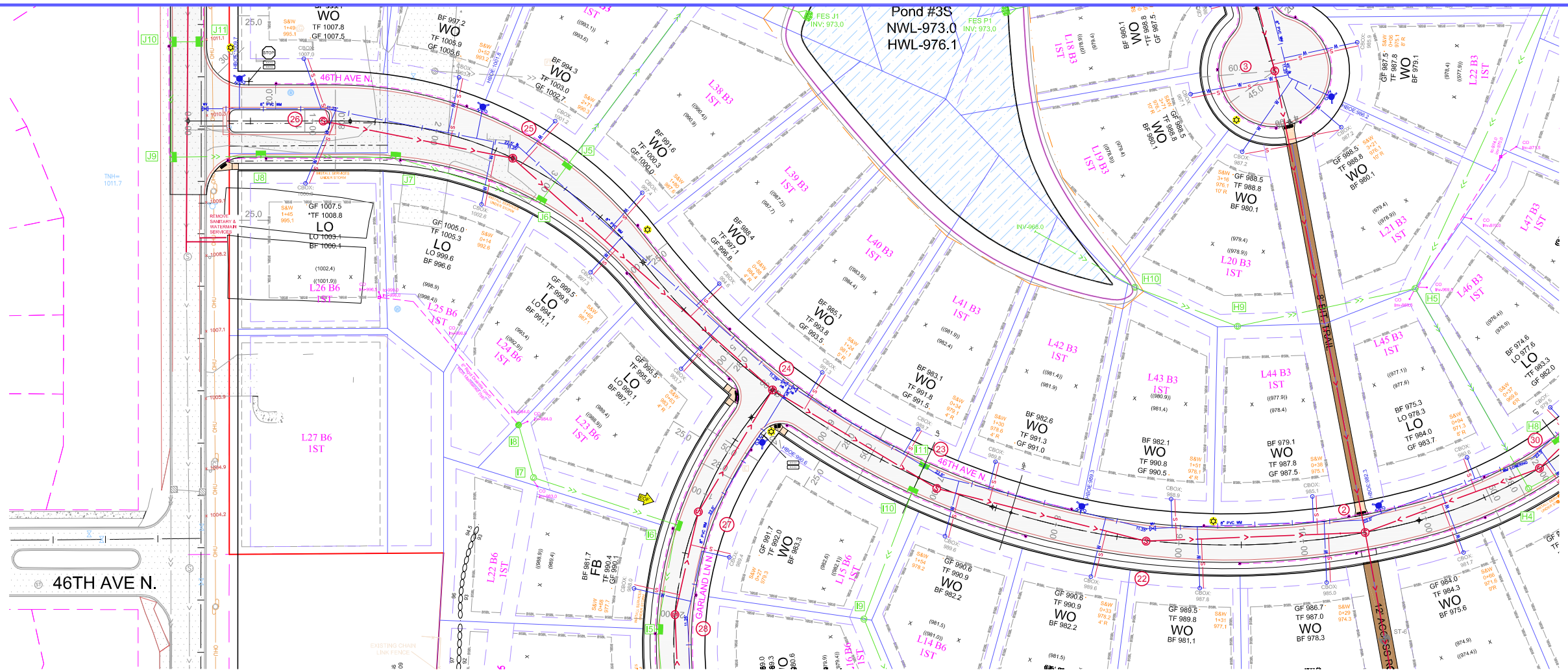
HOLLYDALE

HOLLYDALE GC DEVELOPMENT, INC

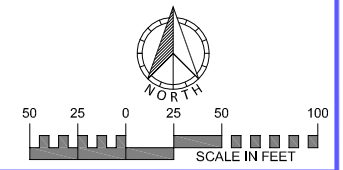
FILE NO. 3120-077

17

48



LEGEND		
DESCRIPTION	PROPOSED	EXISTING
BUILDING SETBACK LINE	BSBL	BSBL
GARAGE SETBACK LINE	GSBL	GSBL
PARCEL BOUNDARY LINE		
DRAINAGE AND UTILITY EASEMENTS		
CURB AND GUTTER		
RIGHT-OF-WAY		
SANWM SERVICE		
BACKYARD CATCH BASIN		
CATCH BASIN		
STORM SEWER MANHOLE		
FLARED END SECTION WRIP-RAP		
STORM STRUCTURE LABEL	CB H3	CB H3
SANITARY STRUCTURE LABEL		
SANITARY SEWER MANHOLE		
WATERMAIN		
HYDRANT		
GATE VALVE		
DRAIN TILE / CLEANOUT		
PLASTIC CATCH BASIN		



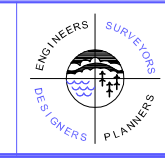
EXISTING UTILITIES SHOWN ARE SHOWN IN AN APPROXIMATE WAY ONLY. THE CONTRACTOR SHALL DETERMINE THE EXACT LOCATION OF ANY AND ALL EXISTING UTILITIES BEFORE COMMENCING WORK. HE AGREES TO BE FULLY RESPONSIBLE FOR ANY AND ALL DAMAGES ARISING OUT OF HIS FAILURE TO EXACTLY LOCATE AND PRESERVE ANY AND ALL EXISTING UTILITIES.

DRAWING NAME	NO.	BY	DATE	REVISIONS
HD - SW				
DRAWN BY				
CHECKED BY				
DATE				
06/30/21				

USE (INCLUDING COPYING, DISTRIBUTION, AND/OR CONVEYANCE OF INFORMATION) OF THIS PRODUCT IS STRICTLY PROHIBITED WITHOUT SATHRE-BERGQUIST, INC.'S EXPRESS WRITTEN AUTHORIZATION. USE WITHOUT SAID AUTHORIZATION CONSTITUTES AN ILLEGITIMATE USE AND SHALL THEREBY INDEMNIFY SATHRE-BERGQUIST, INC. OF ALL RESPONSIBILITY. SATHRE-BERGQUIST, INC. RESERVES THE RIGHT TO HOLD ANY ILLEGITIMATE USER OR PARTY LEGALLY RESPONSIBLE FOR DAMAGES OR LOSSES RESULTING FROM ILLEGITIMATE USE.

I HEREBY CERTIFY THAT THIS PLAN OR SPECIFICATION WAS PREPARED BY ME OR UNDER MY DIRECT SUPERVISION AND THAT I AM A DULY REGISTERED PROFESSIONAL ENGINEER UNDER THE LAWS OF THE STATE OF MINNESOTA.

Robert S. Molstad
 ROBERT S. MOLSTAD, P.E.
 Date: 06/30/21 Lic. No. 26428

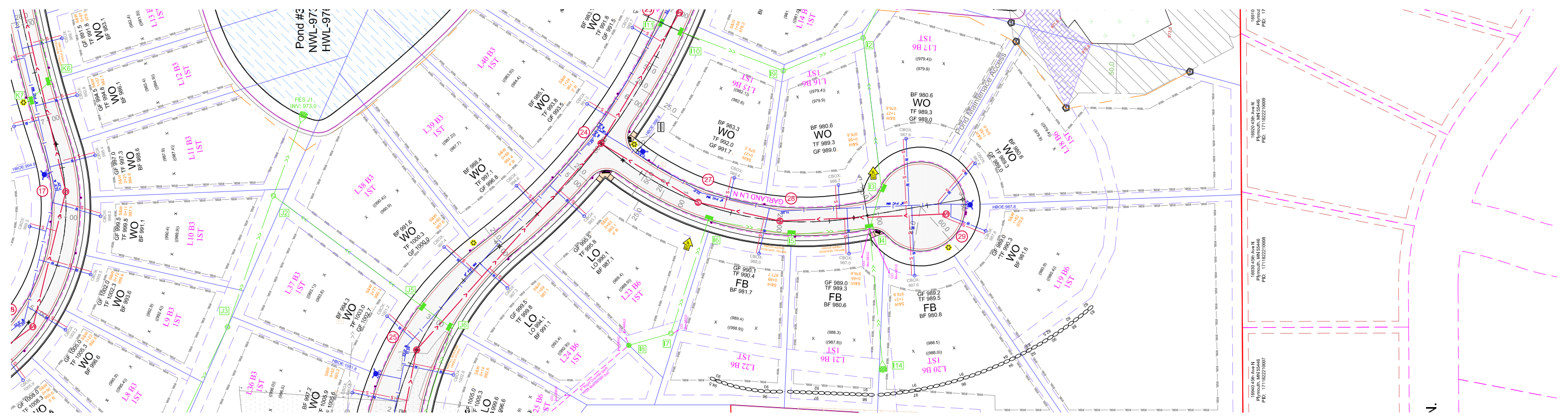


SATHRE-BERGQUIST, INC.
 150 SOUTH BROADWAY WAYZATA, MN. 55391 (952) 476-6000

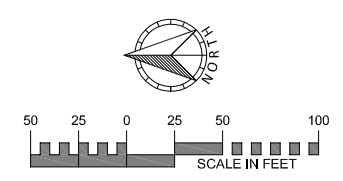
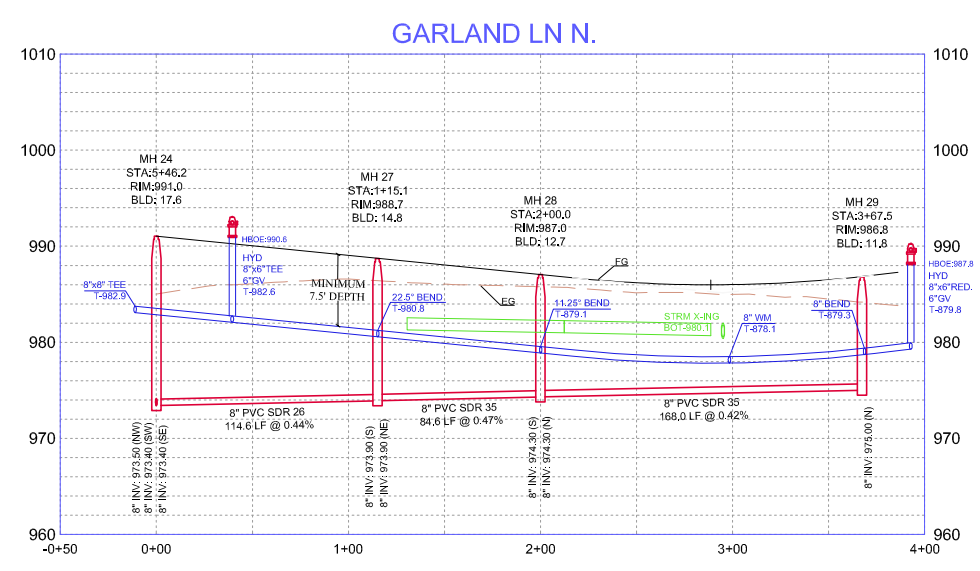
CITY PROJECT NO. ---
PLYMOUTH, MINNESOTA

FINAL SANITARY SEWER & WATERMAIN PLAN
HOLLYDALE
 HOLLYDALE GC DEVELOPMENT, INC

FILE NO. 3120-077
18
48



LEGEND		
DESCRIPTION	PROPOSED	EXISTING
BUILDING SETBACK LINE	BSSL	BSSL
GARAGE SETBACK LINE	CSRL	CSRL
PARCEL BOUNDARY LINE		
DRAINAGE AND UTILITY EASEMENTS		
CURB AND GUTTER		
RIGHT-OF-WAY		
SANWM SERVICE		
BACKYARD CATCH BASIN		
CATCH BASIN		
STORM SEWER MANHOLE		
FLARED END SECTION WRIP-RAP		
STORM STRUCTURE LABEL	CS H3	CS H3
SANITARY STRUCTURE LABEL		
SANITARY SEWER MANHOLE		
WATERMAIN		
HYDRANT		
GATE VALVE		
DRAIN TILE / CLEANOUT		
PLASTIC CATCHBASIN		



EXISTING UTILITIES SHOWN ARE SHOWN IN AN APPROXIMATE WAY ONLY. THE CONTRACTOR SHALL DETERMINE THE EXACT LOCATION OF ANY AND ALL EXISTING UTILITIES BEFORE COMMENCING WORK. HE AGREES TO BE FULLY RESPONSIBLE FOR ANY AND ALL DAMAGES ARISING OUT OF HIS FAILURE TO EXACTLY LOCATE AND PRESERVE ANY AND ALL EXISTING UTILITIES.

DRAWING NAME	NO.	BY	DATE	REVISIONS
HD - SW				
DRAWN BY				
CHECKED BY				
DATE				
06/30/21				

USE (INCLUDING COPYING, DISTRIBUTION, AND/OR CONVEYANCE OF INFORMATION) OF THIS PRODUCT IS STRICTLY PROHIBITED WITHOUT SATHRE-BERGQUIST, INC.'S EXPRESS WRITTEN AUTHORIZATION. USE WITHOUT SAID AUTHORIZATION CONSTITUTES AN ILLEGITIMATE USE AND SHALL THEREBY INDEMNIFY SATHRE-BERGQUIST, INC. OF ALL RESPONSIBILITY. SATHRE-BERGQUIST, INC. RESERVES THE RIGHT TO HOLD ANY ILLEGITIMATE USER OR PARTY LEGALLY RESPONSIBLE FOR DAMAGES OR LOSSES RESULTING FROM ILLEGITIMATE USE.

I HEREBY CERTIFY THAT THIS PLAN OR SPECIFICATION WAS PREPARED BY ME OR UNDER MY DIRECT SUPERVISION AND THAT I AM A DULY REGISTERED PROFESSIONAL ENGINEER UNDER THE LAWS OF THE STATE OF MINNESOTA.

Robert S. Molstad
 ROBERT S. MOLSTAD, P.E.
 Date: 06/30/21 Lic. No. 26428

SATHRE-BERGQUIST, INC.
 150 SOUTH BROADWAY WAYZATA, MN, 55391 (952) 476-6000

ENGINEERS SURVEYORS DESIGNERS PLANNERS

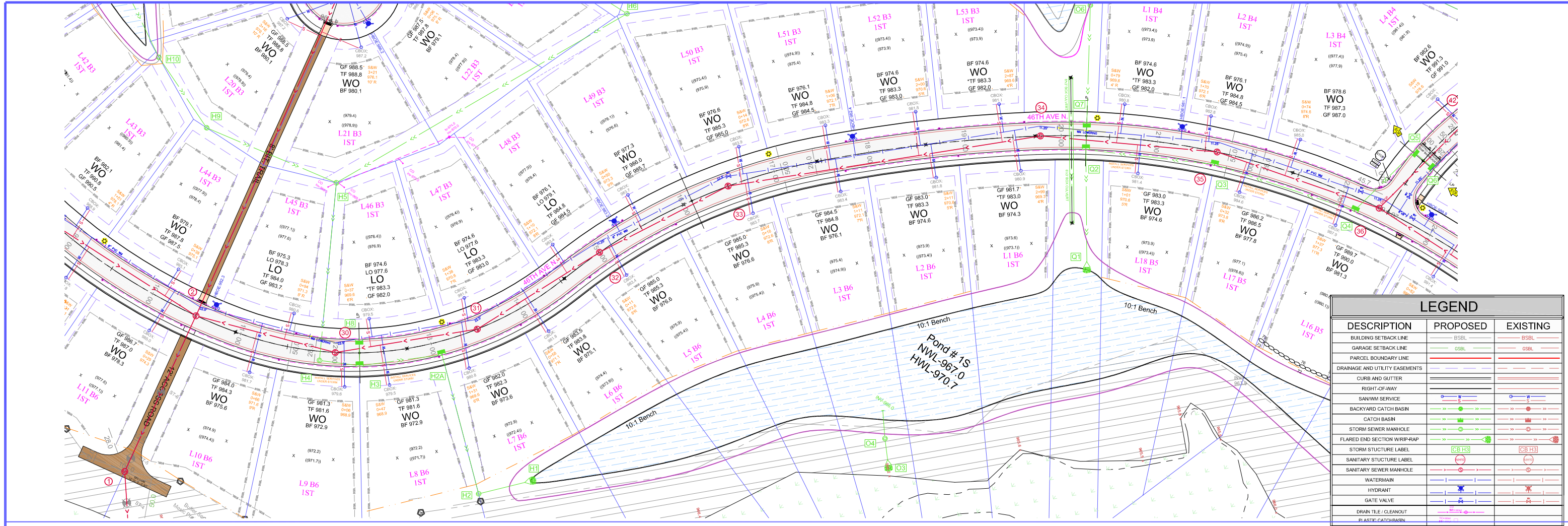
CITY PROJECT NO. ---

PLYMOUTH, MINNESOTA

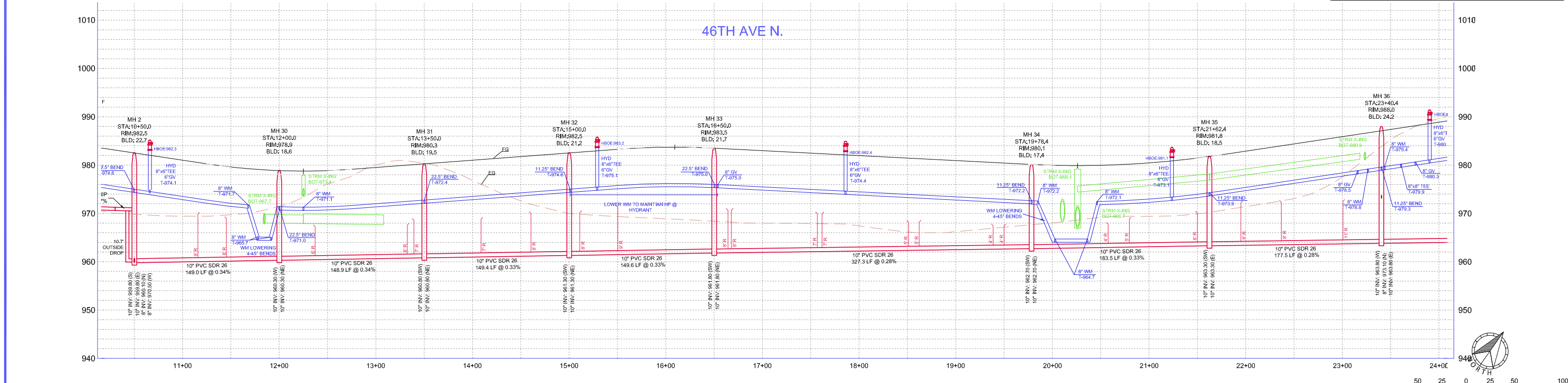
FINAL SANITARY SEWER & WATERMAIN PLAN

HOLLYDALE

HOLLYDALE GC DEVELOPMENT, INC



LEGEND		
DESCRIPTION	PROPOSED	EXISTING
BUILDING SETBACK LINE	BSBL	BSBL
GARAGE SETBACK LINE	GSBL	GSBL
PARCEL BOUNDARY LINE		
DRAINAGE AND UTILITY EASEMENTS		
CURB AND GUTTER		
RIGHT-OF-WAY		
SANWWM SERVICE		
BACKYARD CATCH BASIN		
CATCH BASIN		
STORM SEWER MANHOLE		
FLARED END SECTION WRIP-RAP		
STORM STRUCTURE LABEL	CB H3	CB H3
SANITARY STRUCTURE LABEL		
SANITARY SEWER MANHOLE		
WATERMAIN		
HYDRANT		
GATE VALVE		
DRAIN TILE / CLEANOUT		
PLASTIC CATCH-BASIN		



EXISTING UTILITIES SHOWN ARE SHOWN IN AN APPROXIMATE WAY ONLY. THE CONTRACTOR SHALL DETERMINE THE EXACT LOCATION OF ANY AND ALL EXISTING UTILITIES BEFORE COMMENCING WORK. HE AGREES TO BE FULLY RESPONSIBLE FOR ANY AND ALL DAMAGES ARISING OUT OF HIS FAILURE TO EXACTLY LOCATE AND PRESERVE ANY AND ALL EXISTING UTILITIES.

DRAWING NAME	NO.	BY	DATE	REVISIONS
HD - SW				
DRAWN BY				
CHECKED BY				
DATE				
06/30/21				

USE (INCLUDING COPYING, DISTRIBUTION, AND/OR CONVEYANCE OF INFORMATION) OF THIS PRODUCT IS STRICTLY PROHIBITED WITHOUT SATHRE-BERGQUIST, INC.'S EXPRESS WRITTEN AUTHORIZATION. USE WITHOUT SAID AUTHORIZATION CONSTITUTES AN ILLEGITIMATE USE AND SHALL THEREBY INDEMNIFY SATHRE-BERGQUIST, INC. OF ALL RESPONSIBILITY. SATHRE-BERGQUIST, INC. RESERVES THE RIGHT TO HOLD ANY ILLEGITIMATE USER OR PARTY LEGALLY RESPONSIBLE FOR DAMAGES OR LOSSES RESULTING FROM ILLEGITIMATE USE.

I HEREBY CERTIFY THAT THIS PLAN OR SPECIFICATION WAS PREPARED BY ME OR UNDER MY DIRECT SUPERVISION AND THAT I AM A DULY REGISTERED PROFESSIONAL ENGINEER UNDER THE LAWS OF THE STATE OF MINNESOTA.

Robert S. Molstad
 ROBERT S. MOLSTAD, P.E.
 Date: 06/30/21 Lic. No. 26428

SATHRE-BERGQUIST, INC.
 150 SOUTH BROADWAY WAYZATA, MN, 55391 (952) 476-6000

ENGINEERS SURVEYORS
 DESIGNERS PLANNERS

CITY PROJECT NO. ---

PLYMOUTH, MINNESOTA

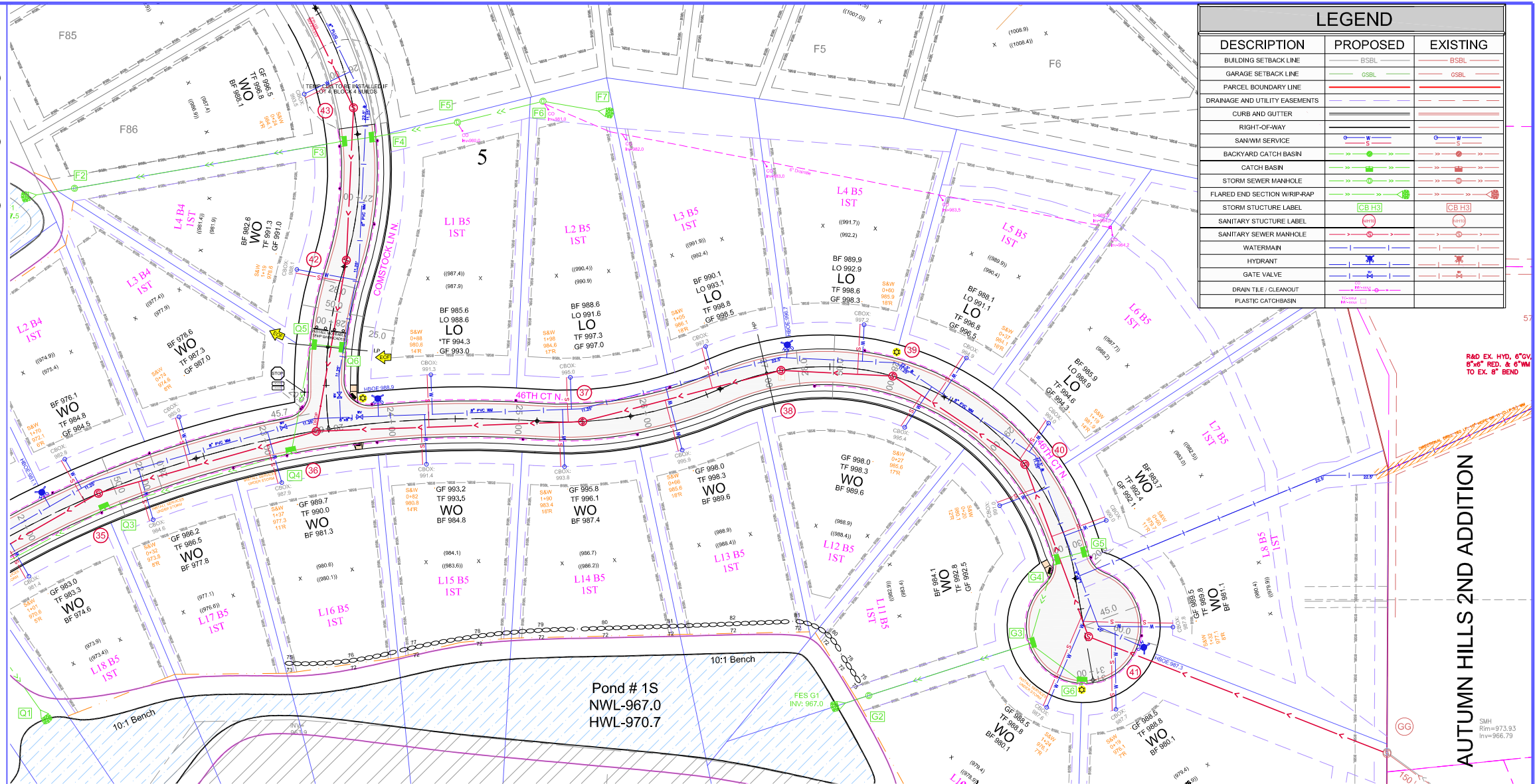
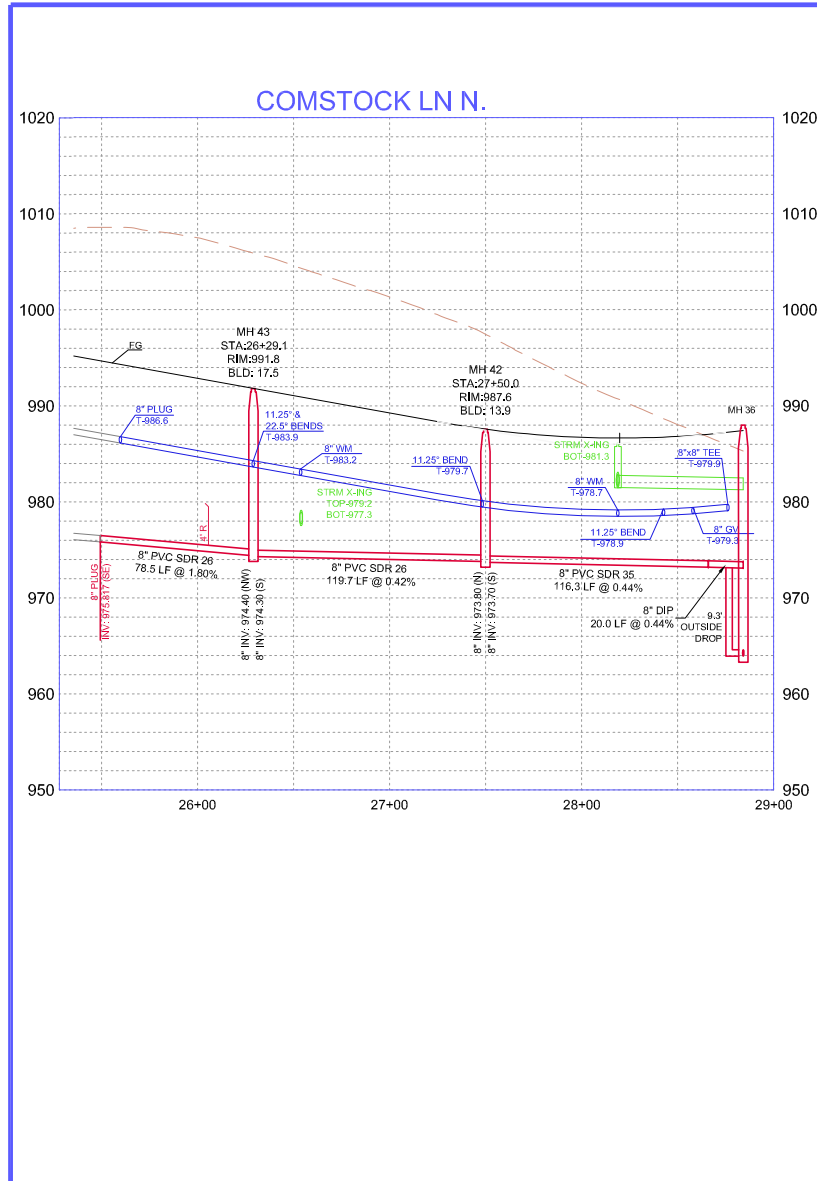
FINAL SANITARY SEWER & WATERMAIN PLAN

HOLLYDALE
 HOLLYDALE GC DEVELOPMENT, INC

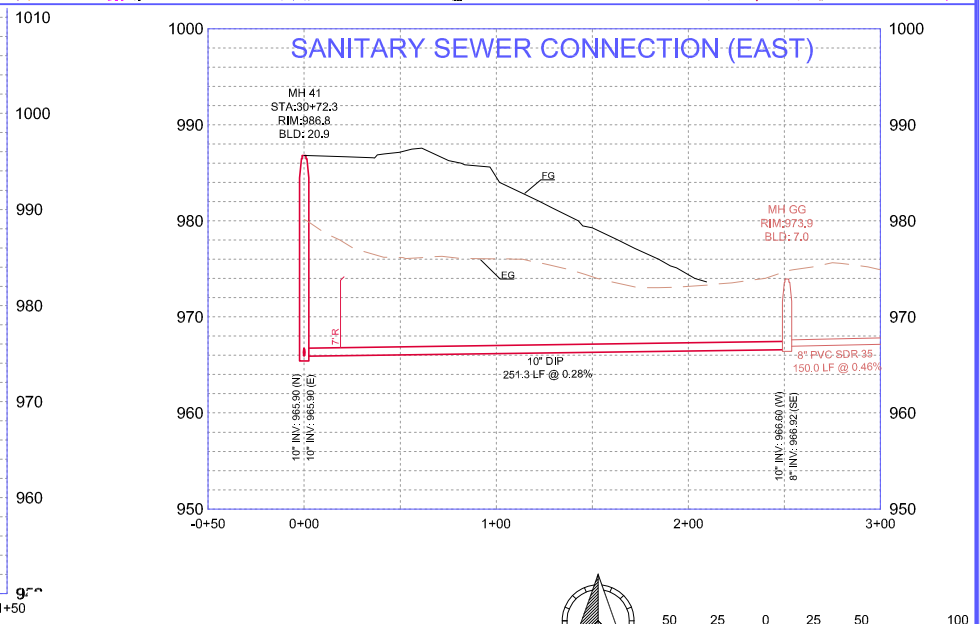
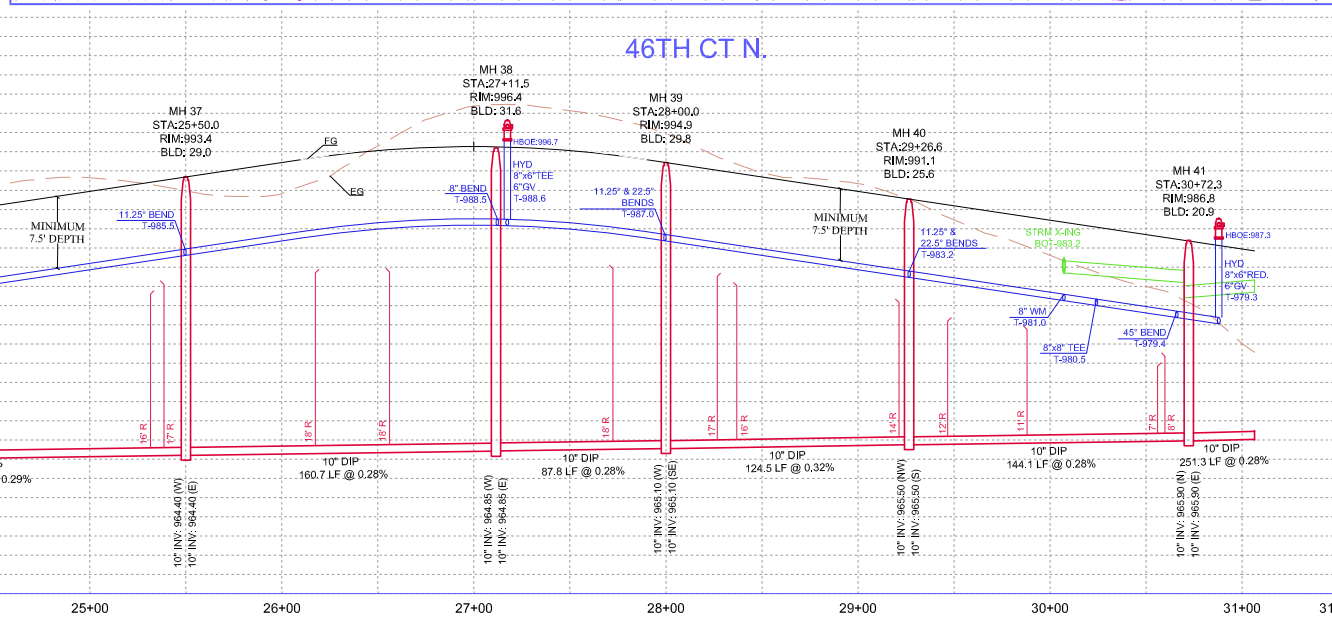
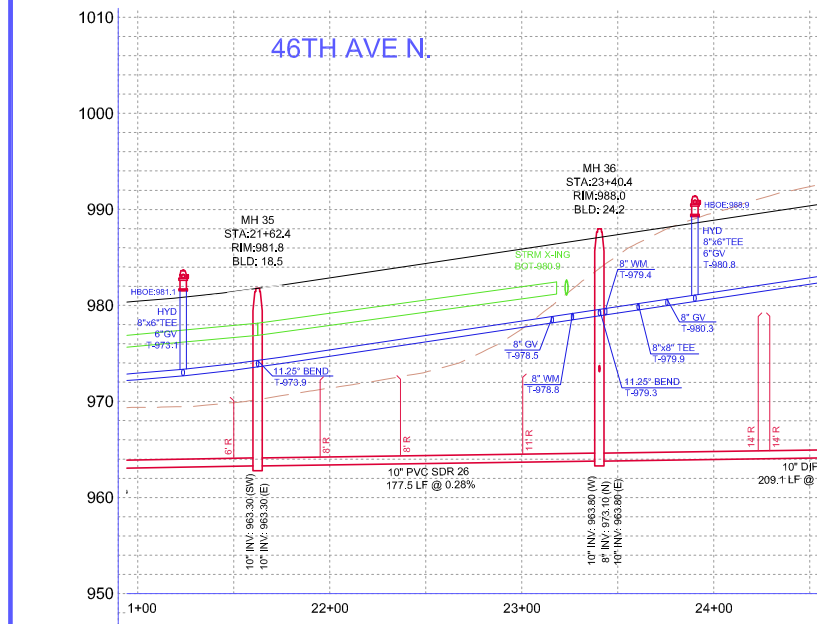
FILE NO. 3120-077

20

48



LEGEND		
DESCRIPTION	PROPOSED	EXISTING
BUILDING SETBACK LINE	BSBL	BSBL
GARAGE SETBACK LINE	GSBL	GSBL
PARCEL BOUNDARY LINE		
DRAINAGE AND UTILITY EASEMENTS		
CURB AND GUTTER		
RIGHT-OF-WAY		
SANITARY SERVICE		
BACKYARD CATCH BASIN		
CATCH BASIN		
STORM SEWER MANHOLE		
FLARED END SECTION WIRP-RAP		
STORM STRUCTURE LABEL	[CB H3]	[CB H3]
SANITARY STRUCTURE LABEL	[MH]	[MH]
SANITARY SEWER MANHOLE		
WATERMAIN		
HYDRANT		
GATE VALVE		
DRAIN TILE / CLEANOUT		
PLASTIC CATCHBASIN		



EXISTING UTILITIES SHOWN ARE SHOWN IN AN APPROXIMATE WAY ONLY. THE CONTRACTOR SHALL DETERMINE THE EXACT LOCATION OF ANY AND ALL EXISTING UTILITIES BEFORE COMMENCING WORK. HE AGREES TO BE FULLY RESPONSIBLE FOR ANY AND ALL DAMAGES ARISING OUT OF HIS FAILURE TO EXACTLY LOCATE AND PRESERVE ANY AND ALL EXISTING UTILITIES.

DRAWING NAME	NO.	BY	DATE	REVISIONS
HD - SW				
DRAWN BY				
CHECKED BY				
DATE				
06/30/21				

USE (INCLUDING COPYING, DISTRIBUTION, AND/OR CONVEYANCE OF INFORMATION) OF THIS PRODUCT IS STRICTLY PROHIBITED WITHOUT SATHRE-BERGQUIST, INC.'S EXPRESS WRITTEN AUTHORIZATION. USE WITHOUT SAID AUTHORIZATION CONSTITUTES AN ILLEGITIMATE USE AND SHALL THEREBY INDEMNIFY SATHRE-BERGQUIST, INC. OF ALL RESPONSIBILITY. SATHRE-BERGQUIST, INC. RESERVES THE RIGHT TO HOLD ANY ILLEGITIMATE USER OR PARTY LEGALLY RESPONSIBLE FOR DAMAGES OR LOSSES RESULTING FROM ILLEGITIMATE USE.

I HEREBY CERTIFY THAT THIS PLAN OR SPECIFICATION WAS PREPARED BY ME OR UNDER MY DIRECT SUPERVISION AND THAT I AM A DULY REGISTERED PROFESSIONAL ENGINEER UNDER THE LAWS OF THE STATE OF MINNESOTA.

Robert S. Molstad
 ROBERT S. MOLSTAD, P.E.
 Date: 06/30/21 Lic. No. 26428

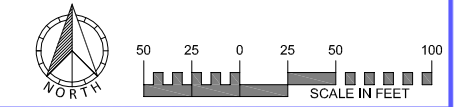
SATHRE-BERGQUIST, INC.
 150 SOUTH BROADWAY WAYZATA, MN. 55391 (952) 476-6000

ENGINEERS SURVEYORS
 DESIGNERS PLANNERS

CITY PROJECT NO. --
 PLYMOUTH, MINNESOTA

FINAL SANITARY SEWER & WATERMAIN PLAN
 HOLLYDALE
 HOLLYDALE GC DEVELOPMENT, INC

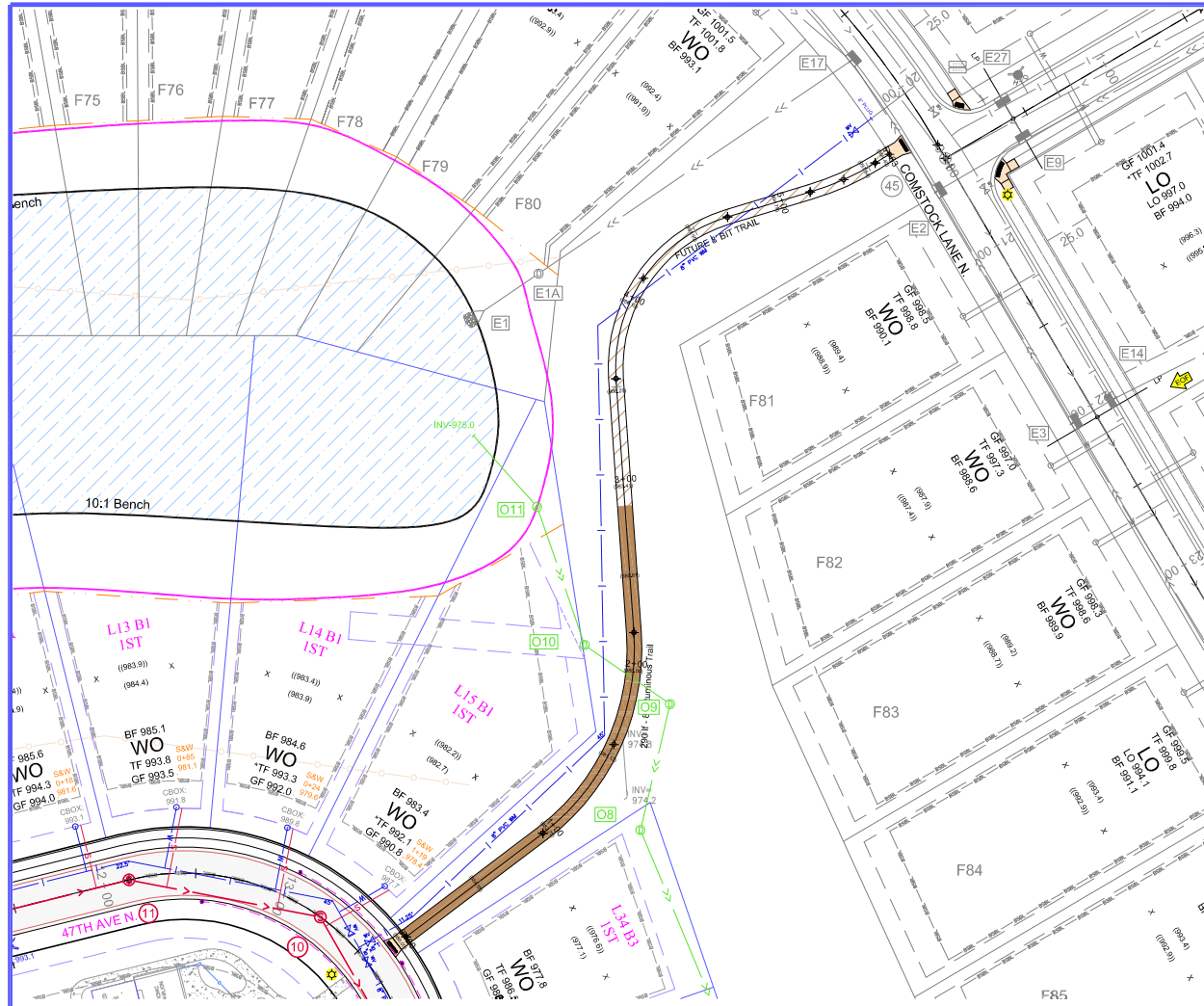
FILE NO. 3120-077
 21
 48



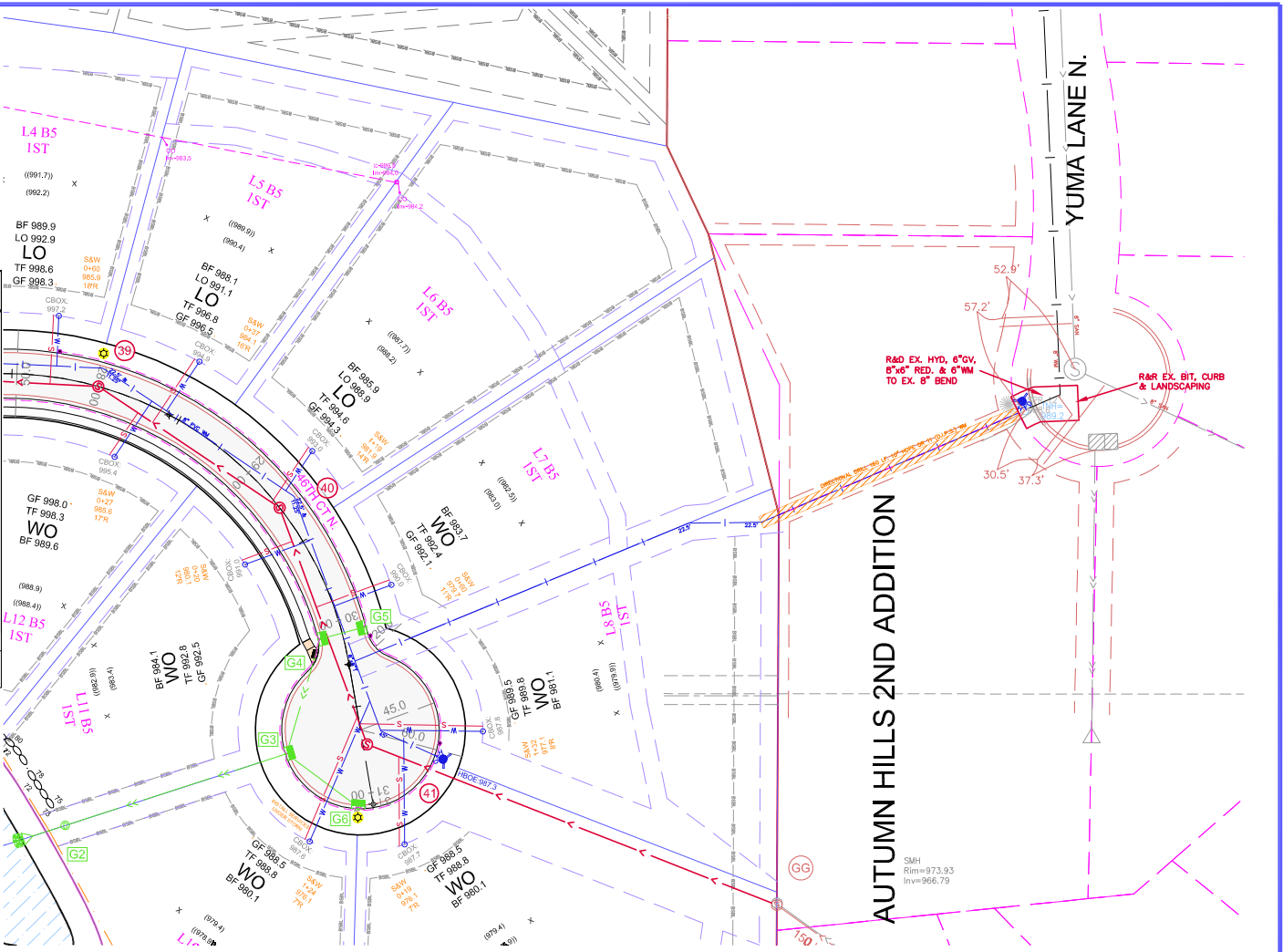
PROJECT NAME AND NUMBER

57

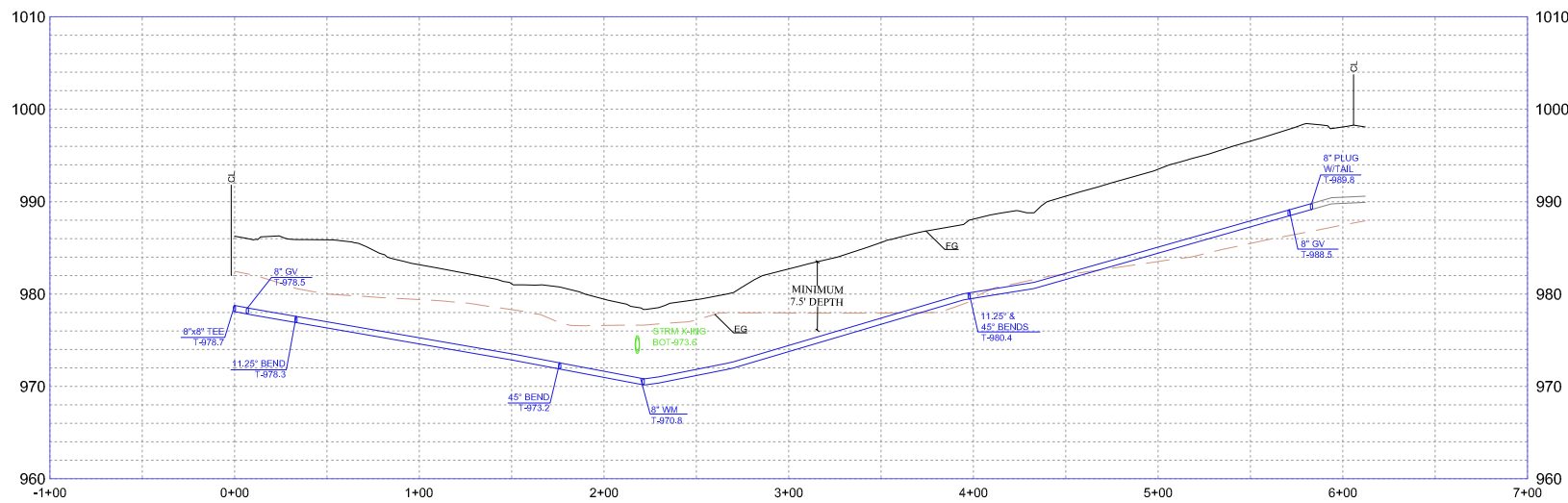
SMH
 RIM=973.33
 INV=966.75



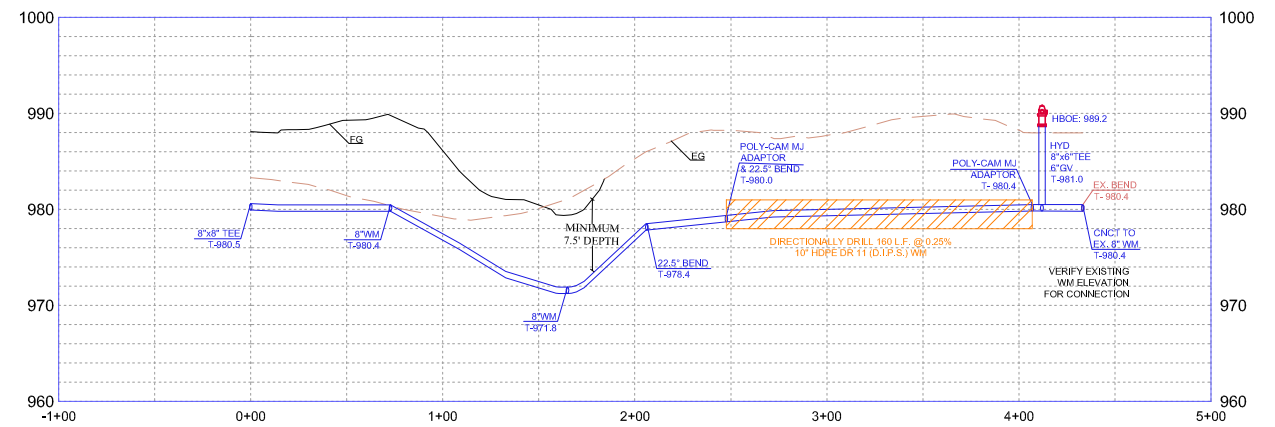
DESCRIPTION	PROPOSED	EXISTING
BUILDING SETBACK LINE	BSBL	BSBL
GARAGE SETBACK LINE	GSBL	GSBL
PARCEL BOUNDARY LINE		
DRAINAGE AND UTILITY EASEMENTS		
CURB AND GUTTER		
RIGHT-OF-WAY		
SANWM SERVICE		
BACKYARD CATCH BASIN		
CATCH BASIN		
STORM SEWER MANHOLE		
FLARED END SECTION WRIP-RAP		
STORM STRUCTURE LABEL	CB H3	CB H3
SANITARY STRUCTURE LABEL		
SANITARY SEWER MANHOLE		
WATERMAIN		
HYDRANT		
GATE VALVE		
DRAIN TILE / CLEANOUT		
PLASTIC CATCHBASIN		



WATERMAIN LOOP (OUTLOT B)



YUMA LANE N WATERMAIN CONNECTION



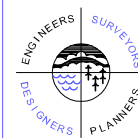
EXISTING UTILITIES SHOWN ARE SHOWN IN AN APPROXIMATE WAY ONLY. THE CONTRACTOR SHALL DETERMINE THE EXACT LOCATION OF ANY AND ALL EXISTING UTILITIES BEFORE COMMENCING WORK. HE AGREES TO BE FULLY RESPONSIBLE FOR ANY AND ALL DAMAGES ARISING OUT OF HIS FAILURE TO EXACTLY LOCATE AND PRESERVE ANY AND ALL EXISTING UTILITIES.

DRAWING NAME	NO.	BY	DATE	REVISIONS
HD - SW				
DRAWN BY				
CHECKED BY				
DATE				
06/30/21				

USE (INCLUDING COPYING, DISTRIBUTION, AND/OR CONVEYANCE OF INFORMATION) OF THIS PRODUCT IS STRICTLY PROHIBITED WITHOUT SATHRE-BERGQUIST, INC.'S EXPRESS WRITTEN AUTHORIZATION. USE WITHOUT SAID AUTHORIZATION CONSTITUTES AN ILLEGITIMATE USE AND SHALL THEREBY INDEMNIFY SATHRE-BERGQUIST, INC. OF ALL RESPONSIBILITY. SATHRE-BERGQUIST, INC. RESERVES THE RIGHT TO HOLD ANY ILLEGITIMATE USER OR PARTY LEGALLY RESPONSIBLE FOR DAMAGES OR LOSSES RESULTING FROM ILLEGITIMATE USE.

I HEREBY CERTIFY THAT THIS PLAN OR SPECIFICATION WAS PREPARED BY ME OR UNDER MY DIRECT SUPERVISION AND THAT I AM A DULY REGISTERED PROFESSIONAL ENGINEER UNDER THE LAWS OF THE STATE OF MINNESOTA.

Robert S. Molstad
 ROBERT S. MOLSTAD, P.E.
 Date: 06/30/21 Lic. No. 26428



SATHRE-BERGQUIST, INC.
 150 SOUTH BROADWAY WAYZATA, MN. 55391 (952) 476-6000

CITY PROJECT NO.
 --
 PLYMOUTH,
 MINNESOTA

FINAL SANITARY SEWER & WATERMAIN PLAN
 HOLLYDALE
 HOLLYDALE GC DEVELOPMENT, INC

FILE NO.
 3120-077
 22
 48

