

Nova'Pro
TENNIS SURFACES

Nova'ProBounce™

CUSHIONED HARD COURT COMFORT



Penn State Abington

Nova'ProBounce is better than any all weather court that you ever have played on.....

Better than an asphalt overlay.

Better than building new with concrete.

Better than crack-filling and painting the old surface.

Better than a post tension concrete overlay

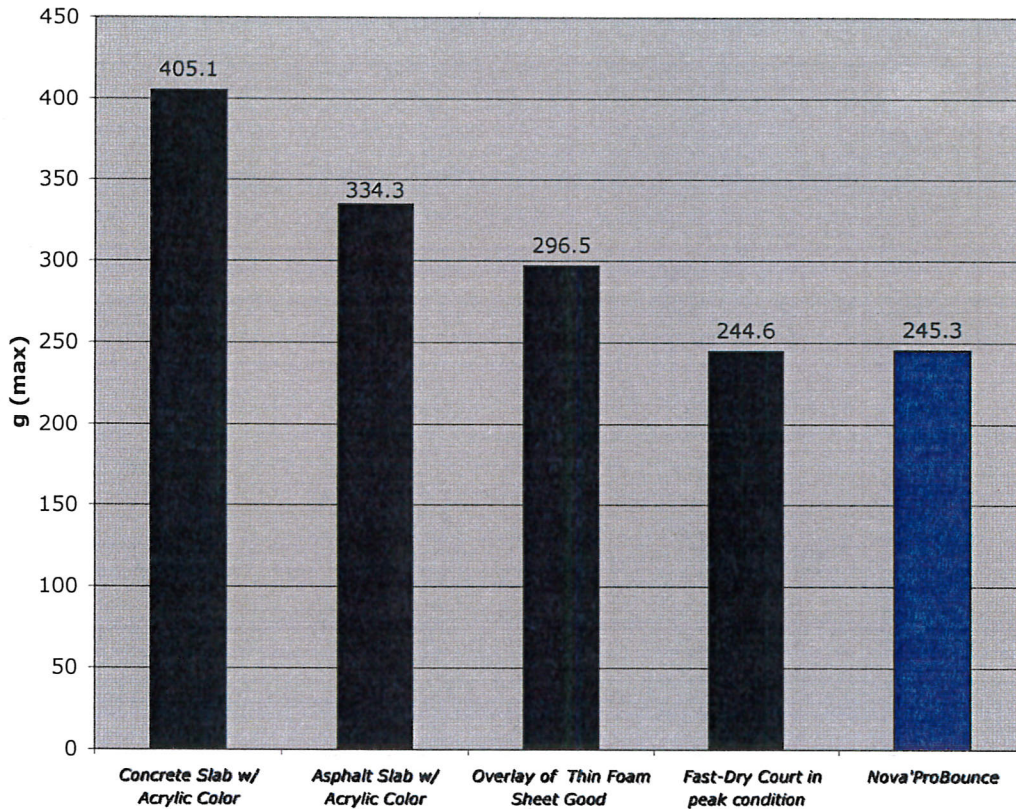
Better than crushing up your old court and re-building.



info@ngisports.com / www.ngisports.com
800-835-0033 / 423-499-5546 / Fax: 423-499-8882

Force Reduction [g (max)] Testing Results for Tennis Surfacing

*(note that higher the value the harder the surface)



FORCE REDUCTION

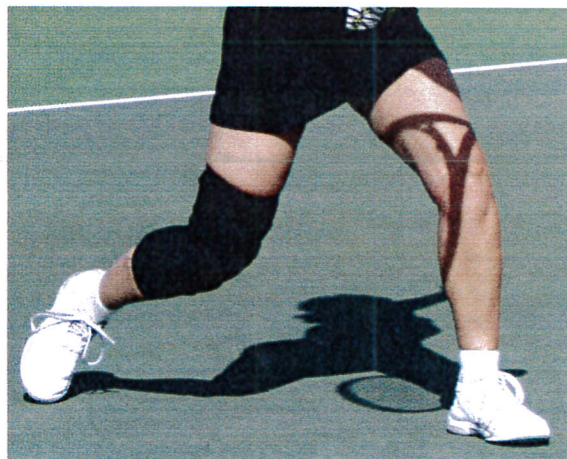
What is G max? Scientifically speaking the test for g max or Peak Acceleration is the maximum deceleration of a missile which occurs during impact, but what does this mean?

This test is important due to the fact that high peak acceleration (g max) values during impacts involving the human body can result in a greater frequency of injury.

What it really affects is the lower back, pelvis, legs, joints, ankles and feet. The harder the surface the more negative effect on the human body. Upon impact with the surface, energy is returned to the body. How much energy is returned is determined by the ability of the surface to absorb that negative energy.

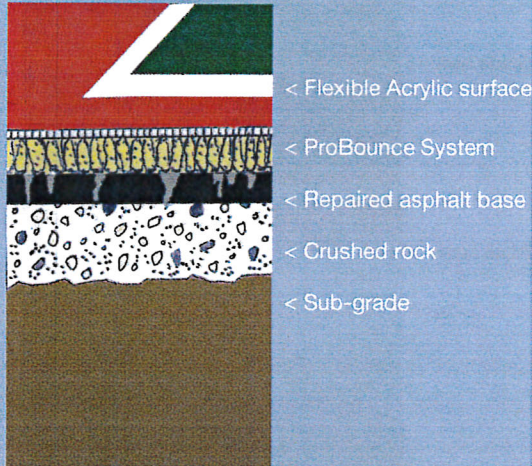
Surfaces with good force reduction allow the player to play longer, more often and over many years to come because there is less stress and damage to the body.

Nova'ProBounce™
CUSHIONED HARD COURT COMFORT



NOVA'PROBOUNCE

Installing directly over an existing pavement is the right economical choice for a long-term solution.



NOVA'PROBOUNCE

*Serving up
a greener place to play*

ECO-FRIENDLY PROBOUNCE

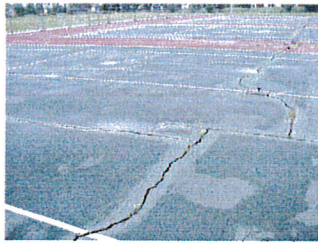
Environmentally friendly tennis court surfaces are being developed one layer at a time by NGI Sports. Providing tennis court surfaces that are economical and aesthetically pleasing with outstanding playability, NGI is also setting the standard in the industry by utilizing environmentally sensitive methods for manufacturing and installation of tennis courts. By incorporating recycled and sustainable elements, Nova'ProBounce is a "green" surfacing system which can be installed easily over deteriorating surfaces, replacing environmentally unfriendly solvent and petroleum based asphalt pavements which also consume high amounts of energy and heat to produce. The production process used for the construction of ProBounce is a smart energy choice because it does not employ high volumes of fossil fuels nor does it release hazardous gases, such as carbon dioxide. Because no heavy equipment is used, the process is not environmentally invasive to the current landscaping and existing vegetation. Fencing and amenities are not removed as all work can be completed within the fence line. Innovation at NGI Sports is nothing new, and creating courts made from eco-friendly materials is our newest mission building a healthier environment and a longer-lasting court, thus, a healthier and longer-lasting planet.

Cost Comparison: Nova'ProBounce vs Asphalt Re-build For two tennis courts

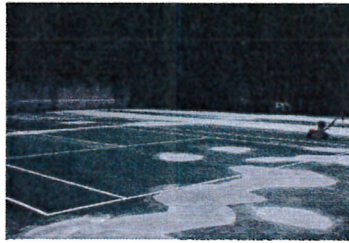
Process	Asphalt	Days	PROBOUNCE	Days
fence mesh removal	3,200.00	2	NA	0
pulverize existing asphalt	5,600.00	1	NA	0
add 2" stone screenings	7,200.00	1	NA	0
laser grade, roll & compact	2,000.00	1	NA	0
overlay with 3" asphalt	33,800.00	1	NA	0
allow asphalt to cure		14	NA	0
reinstall fence mesh	3,700.00	2	NA	0
patch asphalt imperfections	1,000.00	1	3,100.00	2
replace net post sleeves	3,000.00	1	NA	0
install ProBounce			50,000.00	4
**color finish & stripe	10,000.00	3	10,000.00	3
replace landscaping	5,000.00	3	NA	0
Total cost	74,500.00		63,100.00	
Total down time (days)		30		9
Warranty	1 year		5 years	

*NA = NOT APPLICABLE

** Note: Nova'ProBounce is a resilient surface which is engineered to overlay cracked tennis courts. To achieve a resilient surface with asphalt pavement a special coating system or surface would have to be installed on top of the asphalt which would cost in excess of \$15,000.00 and may not have an equivalent shock attenuation value to the player.



BEFORE PICTURE
OF PROBLEM COURT



BASE PREPARATION BY LEVELING
AND CRACK-FILLING OF LOW AREAS



LAYING THE STRATUM LAYER
A THERMALLY AND DIMENSIONALLY
STABLE SYNTHETIC TURF



TRIM EDGES OF THE STRATUM
AND SEAM W/ PB TAPE AND
PB- ADHESIVE TO CREATE A
FREE FLOATING PAVEMENT



APPLY NATURAL SAND INFILL TO
ACT AS BALLAST
FOR SYSTEM



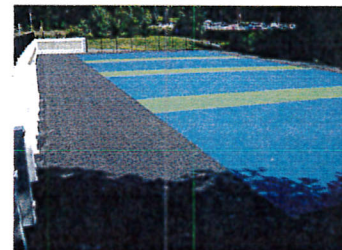
SATURATE THE INFILLED STRATUM
WITH A POLYMER RESIN TO BIND ALL
COMPONENTS TOGETHER



PREPARE STABILIZED STRATUM
LAYER FOR THE FLEXIBLE
COLOR FINISH



SQUEEGEE APPLY APPROVED
FLEXIBLE BASE COAT OF ACR BINDER



FLEXIBLE COLOR OVER FLEXIBLE
ACR BASE COAT



WILSON PARK, FAYETTEVILLE AR/ COMPLETED 2001

GALLERY



**CAROLLO RESIDENCE
PARADISE VALLEY, AZ
INSTALLED 2000**



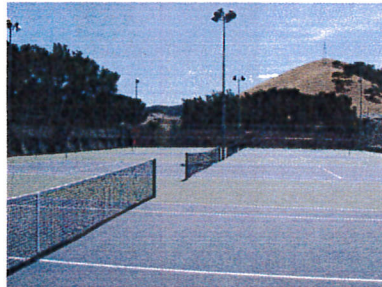
**UNIVERSITY OF TOLEDO
TOLEDO OH
INSTALLED 2012**



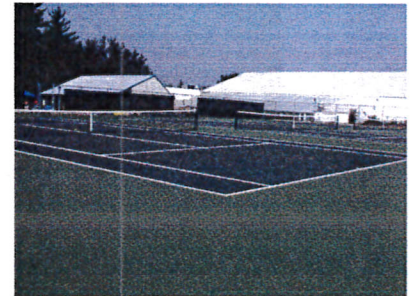
**GETTYSBURG HS
GETTYSBURG, PA
INSTALLED 2009**



**GERMANTOWN CRICKET CLUB
PHILADELPHIA, PA
INSTALLED 2000**



**MORGAN HILL PARK
SAN JOSE, CA
INSTALLED 2007**



**CONCORD RACQUET CLUB
CONCORD, NH
INSTALLED 2002**



**AGILENT TECHNOLOGY
WILMINGTON, DE
INSTALLED 2008**



**SANFORD SCHOOL
HOCKESSIN, DE
INSTALLED 2001**



**TEAM JAMIRI TENNIS
PHILADELPHIA, PA
INSTALLED 2006**

TENNIS INDUSTRY
MARCH/APRIL 2000 VOLUME 25 NUMBER 2 \$5.00

INDUSTRY UPDATE

INNOVATIONS
NEW SURFACE GOES RIGHT OVER CRACKED COURTS

The thought of repairing cracks in hard courts can give club owners and facility directors a splitting headache. One of the newest innovations in surface repair, however, could provide some relief without putting your courts out of action for long periods of time.

Nova's Pro-Bounce, designed by Novagras International, is a synthetic cushioned hard-court surface that can be installed right over your existing courts—cracks and all.

The system not only repairs deteriorating courts with a new surface layer that does so without forcing you to disturb existing landscaping or desire landscaping, but the manufacturer says play can resume in about four days, rather than the usual three months that other types of resurfacing can take.

Novagras says the new Nova'Pro-Bounce surface, warranted for five years, not to crack, gives hard-court play on a soft court, which is easier on players' knees. The system is based on a stabilized (dechlorinated) resin over a foam structure designed to prevent moisture infiltration. Ultra fabric filaments stabilize the resin components.

"It has been our intent to produce a surface that would solve the problems court owners experience with cracks and other faults," says Novagras' Pro-Bounce inventor Rick Barile, "not only to [produce] a long-term solution, but also to bring to the player a resilient surface that would reduce joint and muscle fatigue." —Hansen Florence

WEB COMMERCE IS CHANGING YOUR BUSINESS

Courts On a Roll

A MANUFACTURED COMPOSITE SURFACE SYSTEM MAY BE WHAT YOU NEED TO FIX CRACKED COURTS.

BY ANDREW R. LAVALLÉE, ASLA

SOUND SURFACES

Morgan Hill Community Park opted to be environmentally conscious when it re-surfaced its tennis court using materials made of recycled rubber and soybean oil.

50 PARKS & RECREATION
NOVEMBER 2007



NGI Sports Offers Eco-Friendly Courts

Tennis courts are being "green." And we're not just talking about the color. For the past nine years, NGI Sports of Chantanooga, Tenn., has been applying environmentally sensitive methods for manufacturing and installing tennis courts, using recycled and sustainable materials. The company, a division of Fibre Clay Architectural, provides a turn-key system that reduces the use of solvent and petroleum-based materials and employs alternative "green" materials instead.

For instance, NGI says that its Nova'ProBounce—a cushioned, all-weather surface system—reduces environmentally unfriendly solvent and petroleum-based asphalt pavements. The production process for ProBounce, says the company, uses a variety of energy-efficient methods of manufacturing, such as carbon dioxide flow, to help, engineers is required for the installation, further reducing the dependence on fossil fuels.

ProBounce is constructed using roll-applied, water-based resin, concrete, and natural aggregates. The patented pavement also features a urethane waterproofing, says NGI, which is made from an 80 percent recycled and sustainable pigment materials by weight. Components of the paving are based on polymers extracted from soybean oil, a renewable resource. And NGI says it's a stronger material than traditional hard-top but more forgiving to the customer than the traditional hard-top process.

"If a surface has 'diverged slightly'—line-marking above the surface—and can be installed directly over a cracked, existing asphalt and concrete courts, the existing surface does not need to be removed, and the detouring pavement can be recycled, says the company. The surfaces can be installed in new pavements and installed directly over a cracked top as well.

For more information, contact NGI Sports at 404-475-4955 or info@ngisports.com, or visit www.ngisports.com.

USRSA MEMBER CLASSIFIEDS

FOR SALE: Tennis and Health Club Four indoor tennis courts, racquetball, handball, five weights, six outdoor courts with clubhouse and garage. 423-341-3454 visit web site of www.toddshirts.usrta.com

FOR SALE: 52 Fischer Magnetic Tour 100 vs. in all in new condition, all string at \$0.10, with different strings. Grip #3—all have the plastic grip. Sell for \$120 ea. with shipping. Please call Jim Wahl 578-752-1466 home 404-539-3247 cell.

FOR SALE: 1 Prince Speedport Red Racquet—New condition, grip #3—\$159.00 with shipping. String with Ashaway 18ga. hybrid. Please call Jim Wahl 578-752-1466 home, 404-539-3247 cell.

Tip-Off
NEWS FROM THE FIELD

The Supreme Court: Talking Tennis

... [The rest of the article text is small and difficult to read, but it appears to be a news snippet about tennis and the Supreme Court.]

PALMETTO DUNES NEWS

Tennis Center Installs ProBounce Courts; Helps Players With The Hard Choices Hilton Head Island, SC ... April 7, 2003... The only two hard surface courts at the Palmetto Dunes Tennis Center have been reinvigorated, and players are lobbying with excitement.



RSI
You're Always On Top of Your Game...
Now Stay On Top of The Industry.